

RNAV (RNP) Z RWY 23R

RALEIGH-DURHAM INTL (RDU)

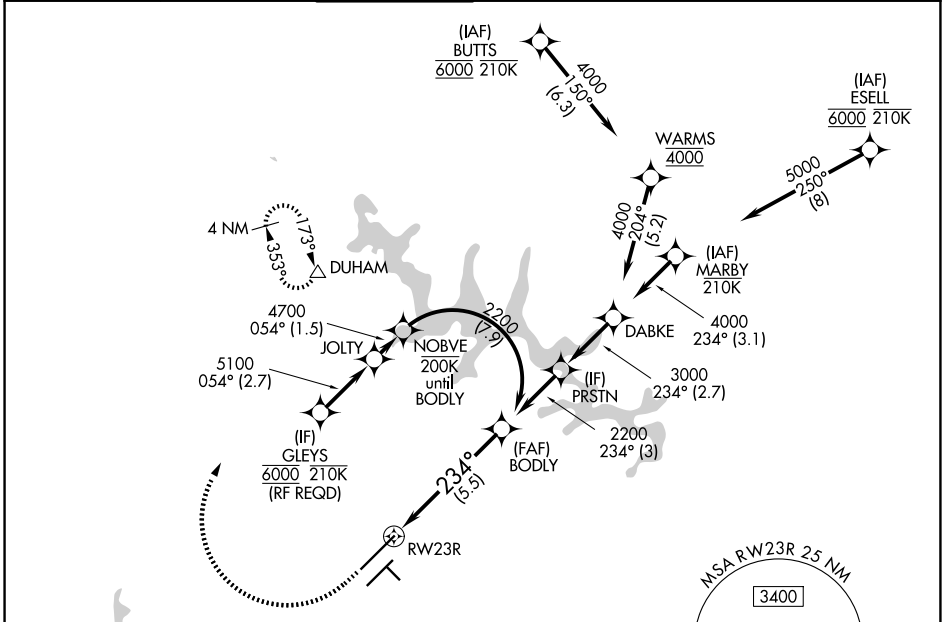
APP CRS 234°	Rwy Ldg 10000 TDZE 409 Apt Elev 435
------------------------	--

RNP AR APCH-GPS.

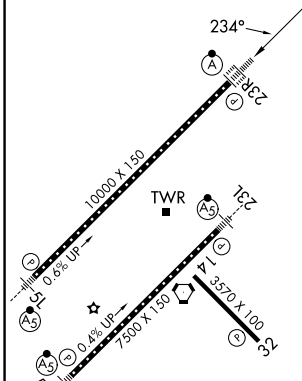
▼ For uncompensated Baro-VNAV systems, procedure NA below -12°C or above 54°C.
For inop ALS, increase RNP 0.15 all Cats visibility to RVR 5500, increase RNP 0.30 all Cats visibility to 1½ SM. Simultaneous approach authorized except for arrivals at GLEYS.

ALS-F-2 	MISSED APPROACH: Climb to 1000 then climbing right turn to 2200 direct DUHAM and hold.
-------------	--

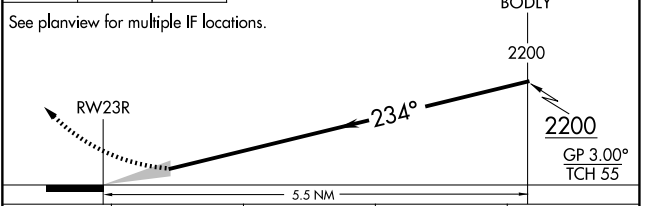
D-ATIS 123.8	RALEIGH APP CON 127.675 307.9	RALEIGH TOWER 127.45 257.8	GND CON 121.9 348.6	CLNC DEL 120.1	CPDLC
------------------------	---	--------------------------------------	-------------------------------	--------------------------	-------



ELEV 435	D	TDZE 409
----------	----------	----------



1000	2200	DUHAM	VGSI and RNAV glidepath not coincident (VGSI Angle 3.00°/TCH 69°).
------	------	-------	--



CATEGORY	A	B	C	D
RNP 0.15 DA		760/30	351 (400-%)	
RNP 0.30 DA		910/55	501 (500-1)	

REIL Rwy 32
MIRL Rwy 14-32
HIRL Rwys 5R-23L and 5L-23R
TDZ/CL Rwys 5L, 23L, and 23R

SE-2, 09 JUL 2026 to 06 AUG 2026

SE-2, 09 JUL 2026 to 06 AUG 2026

AUTHORIZATION REQUIRED