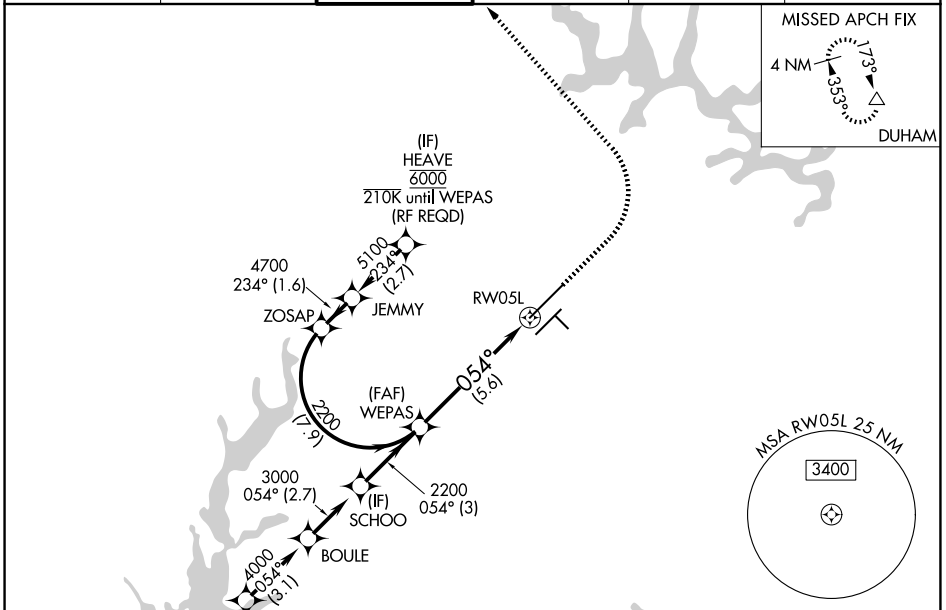


APP CRS	Rwy Ldg	<b>10000</b>
<b>054°</b>	TDZE	<b>384</b>
	Apt Elev	<b>435</b>

# RNAV (RNP) Z RWY 5L

RALEIGH-DURHAM INTL (RDU)

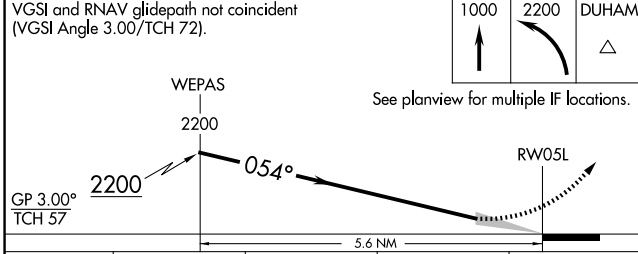
RNP AR APCH-GPS.				MALSR	MISSED APPROACH: Climb to 1000 then climbing left turn to 2200 direct DUHAM and hold.
<p>▼ For uncompensated Baro-VNAV systems, procedure NA below -1°C or above 54°C. Simultaneous approach authorized, except for arrivals at HEAVE. For inop ALS, increase RNP 0.10 all Cats visibility to RVR 4500.</p>					
D-ATIS	RALEIGH APP CON	RALEIGH TOWER	GND CON	CLNC DEL	CPDLC
<b>123.8</b>	<b>127.675 307.9</b>	<b>127.45 257.8</b>	<b>121.9 348.6</b>	<b>120.1</b>	



SE-2, 09 JUL 2026 to 06 AUG 2026

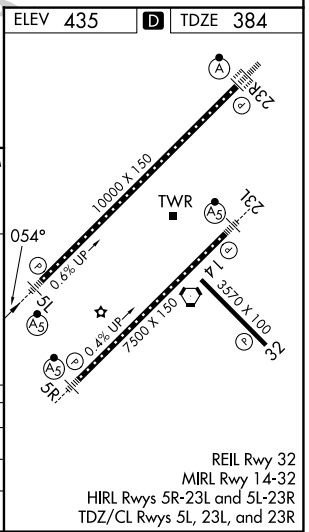
SE-2, 09 JUL 2026 to 06 AUG 2026

(IAF) OTTOS	6000 210K
(IAF) CHWDR	210K
(IAF) BOULE	4000 0.54° (3.1)
(IF) SCHOO	2200 0.54° (3)
(FAF) WEPAS	2200 0.54° (2.7)
(IF) JEMMY	5100 234° (2.7)
(IF) ZOSAP	4700 234° (1.6)
(IF) HEAVE	6000 210K until WEPAS (RF REQD)



CATEGORY	A	B	C	D
RNP 0.10 DA		684/24	300 (300-½)	
RNP 0.30 DA		780/35	396 (400-⅝)	

### AUTHORIZATION REQUIRED



REIL Rwy 32  
MIRL Rwy 14-32  
HIRL Rws 5R-23L and 5L-23R  
TDZ/CL Rws 5L, 23L, and 23R