

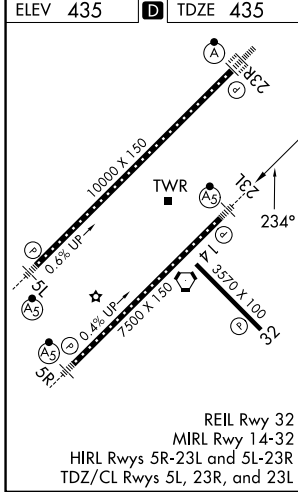
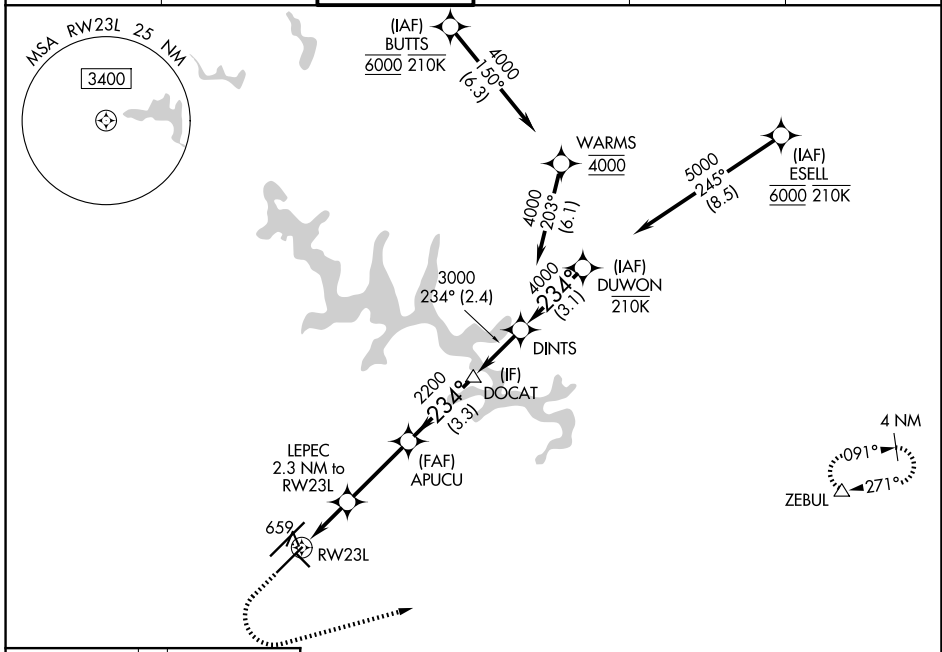
WAAS CH 65713 W23B	APP CRS 234°	Rwy Ldg TDZE 435 Apt Elev 435
--	------------------------	---

RNAV (GPS) Y RWY 23L

RALEIGH-DURHAM INTL (RDU)

RNP APCH-GPS.	MALSR 	MISSED APPROACH: Climb to 1100 then climbing left turn to 2600 direct ZEBUL and hold.
<p>▼ Simultaneous approach authorized. LNAV procedure NA during simultaneous operations. For uncompensated Baro-VNAV systems, LNAV/VNAV NA below -1.2°C or above 54°C. Use of FD or AP required during simultaneous operations. For inop ALS, increase LNAV Cat C/D visibility to 1 3/8 SM.</p>		

D-ATIS 123.8	RALEIGH APP CON 127.675 307.9	RALEIGH TOWER 127.45 257.8	GND CON 121.9 348.6	CINC DEL 120.1	CPDLC
------------------------	---	--------------------------------------	-------------------------------	--------------------------	-------



ELEV 435	TDZE 435	1100	2600	ZEBUL	
		*LNAV only.			
		LEPEC 2.3 NM to RW23L	APUCU 2200	DOCAT	DINTS 3000
		*1.4 NM to RW23L			DUWON 5000
		1200*	2200		GP 3.00°
		1.4 NM	0.9 NM	3.1 NM	TCH 56
CATEGORY	A	B	C	D	
LPV DA	635/18		200 (200-1/2)		
LNAV/VNAV DA	820/35		385 (400-5/8)		
LNAV MDA	920/24	485 (500-1/2)	920/50	485 (500-1)	
CIRCLING	960-1	525 (600-1)	1020-1 1/2 585 (600-1 1/2)	1180-2 1/2 745 (800-2 1/2)	

SE-2, 09 JUL 2026 to 06 AUG 2026

SE-2, 09 JUL 2026 to 06 AUG 2026