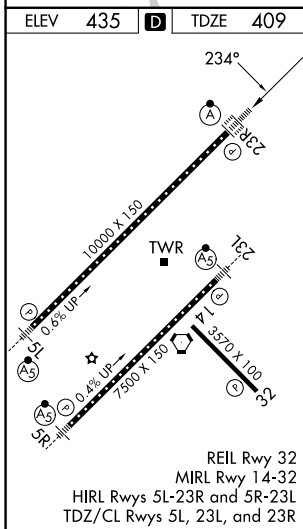
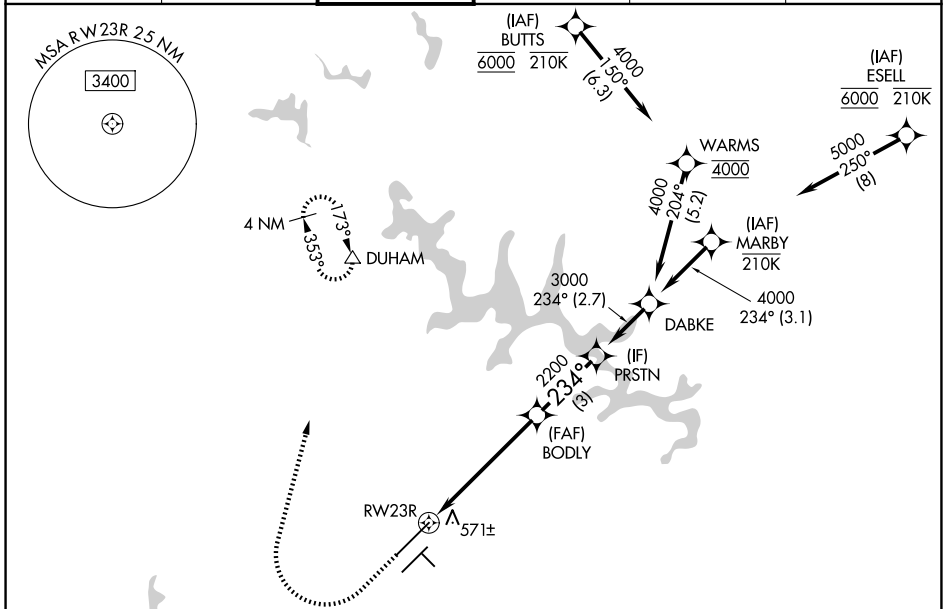


WAAS CH 45613 W23A	APP CRS 234°	Rwy Ldg 10000 TDZE 409 Apt Elev 435
--	------------------------	--

RNAV (GPS) Y RWY 23R

RALEIGH-DURHAM INTL (RDU)

RNP APCH - GPS		Simultaneous approach authorized. LNAV procedure NA during simultaneous operations. Use of FD or AP providing RNAV track guidance required during simultaneous operations. For uncompensated Baro-VNAV systems, LNAV/VNAV NA below -12°C or above 54°C. For inop ALS, increase LNAV/VNAV all Cats visibility to RVR 6000 and LNAV Cat C/D visibility to 1½ NM.		ALSF-2 	MISSED APPROACH: Climb to 1000 then climbing right turn to 2200 direct DUHAM and hold.
D-ATIS 123.8	RALEIGH APP CON 127.675 307.9	RALEIGH TOWER 127.45 257.8	GND CON 121.9 348.6	CLNC DEL 120.1	CPDLC



ELEV 435	D	TDZE 409		
1000 2200 DUHAM ↑ ↷ △ VGSi and RNAV glidepath not coincident (VGSi Angle 3.00/TCH 69).				
RWY 23R 1.6 NM 3.9 NM 3 NM 2.7 NM 3.1 NM BODY 2200 PRSTN DABKE MARBY 5000 GP 3.00° TCH 55				
CATEGORY	A	B	C	D
LPV DA	609/18	200 (200-½)		
LNAV/VNAV DA	826/40	417 (400-¾)		
LNAV MDA	980/24	571 (600-½)	980-1¼	571 (600-1¼)
CIRCLING	980-1	545 (600-1)	1020-1½ 585 (600-1½)	1180-2½ 745 (800-2½)

SE-2, 09 JUL 2026 to 06 AUG 2026

SE-2, 09 JUL 2026 to 06 AUG 2026