

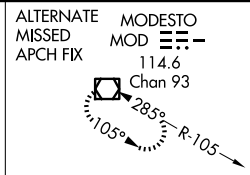
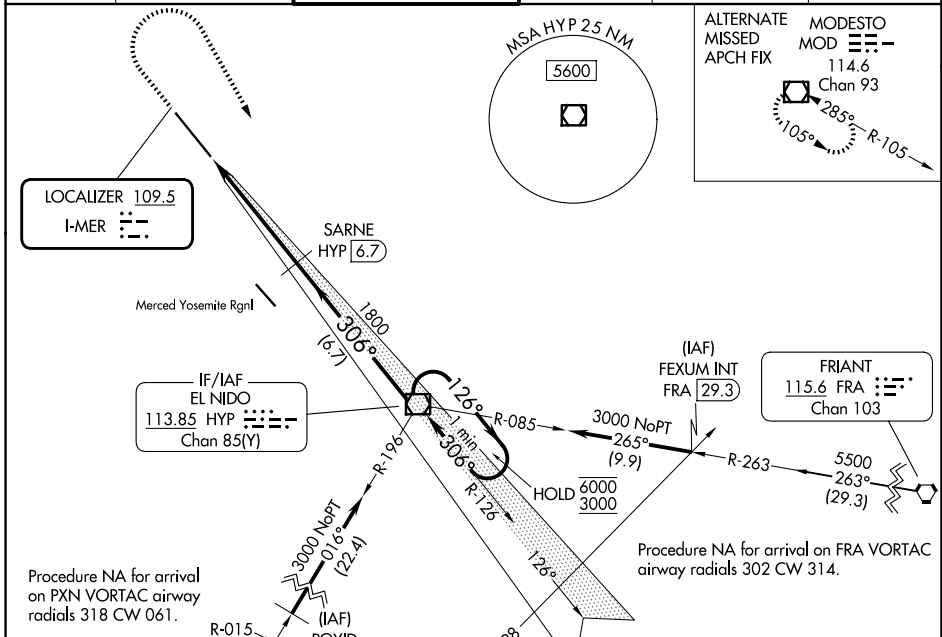
LOC I-MER 109.5	APP CRS 306°	Rwy Ldg 11802 TDZE 181 Apt Elev 190
---------------------------	------------------------	--

ILS or LOC RWY 31

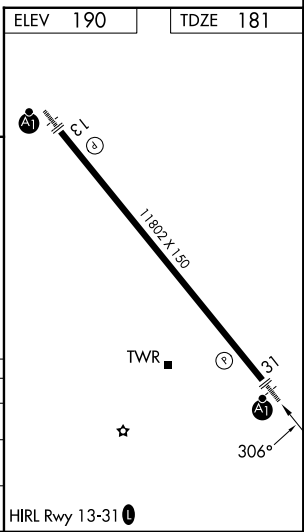
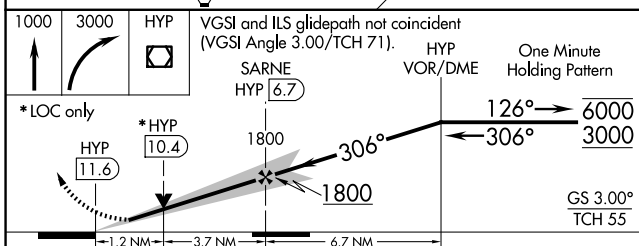
CASTLE (MER)

DME required for LOC only.	ALSF-1 	MISSED APPROACH: Climb to 1000 then climbing right turn to 3000 direct HYP VOR/DME and hold.
Circling NA southwest of Rwy 13-31. DME from HYP VOR/DME.		
Simultaneous reception of I-MER and HYP DME required.		

ATIS 124.475	NORCAL APP CON 120.95 269.45	CASTLE TOWER * 118.175 (CTAF) 235.775	GND CON 133.575	UNICOM 122.95	123.0
------------------------	--	---	---------------------------	-------------------------	--------------



ELEV 190	TDZE 181
-----------------	-----------------



CATEGORY	A	B	C	D
S-ILS 31	381-1/2		200 (200-1/2)	
S-LOC 31	620-1/2 439 (500-1/2)		620-3/4 439 (500-3/4)	
CIRCLING	660-1 470 (500-1)		720-1 1/2 800-2 530 (600-1 1/2) 610 (700-2)	

SW-2, 09 JUL 2026 to 06 AUG 2026

SW-2, 09 JUL 2026 to 06 AUG 2026