

HI-ILS Y or LOC Y RWY 13

LOC/DME I-PVO 109.1 Chan 28	APCH CRS 128°	Rwy Idg 10,001 TDZE 75 Arprt Elev 75
---	-------------------------	---

[USAF]

ATLANTIC CITY INTL (KACY)

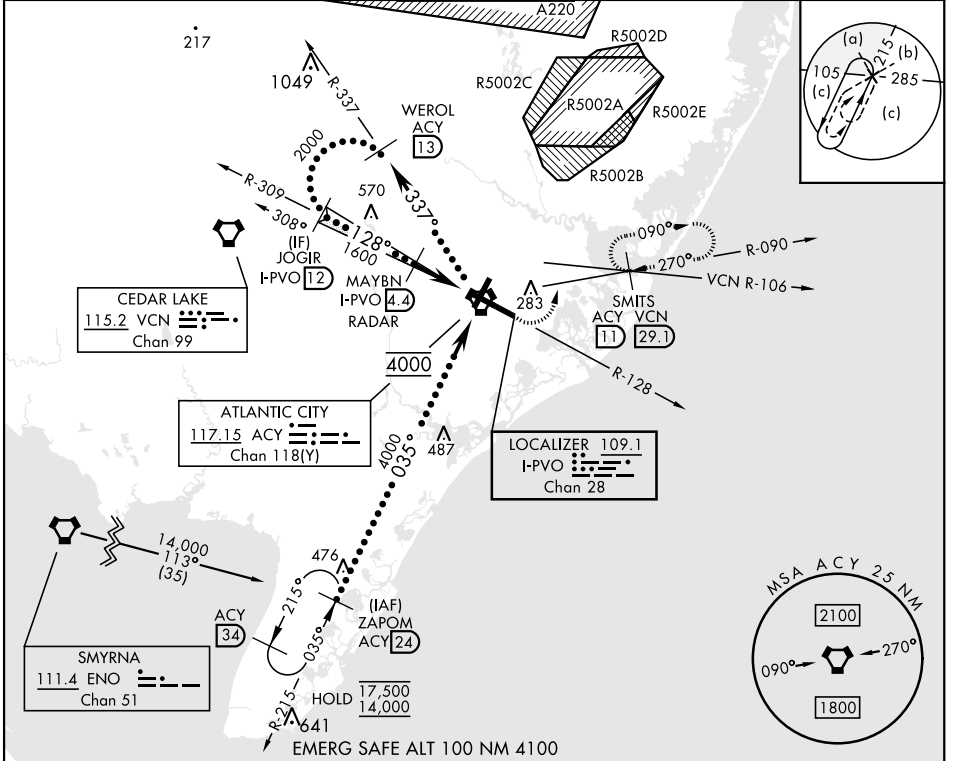
DME or RADAR required

MALSR

MISSED APPROACH: Climb to 600 then climbing left turn to 2000 on ACY R-090 to SMITS/ACY 11 DME and hold.

▼ * When ALS inop, increase RVR to 40 and vis to 3/4 mile.
** When ALS inop, increase vis to 1 3/8 miles.

ATIS 125.725 316.15	APP CON 124.6 327.125 (130° - 309°) 134.25 292.2 (310° - 129°)	TOWER 120.3 239.0	GND CON 121.9 284.6	CLNC DEL 127.85 353.775
-------------------------------	--	-----------------------------	-------------------------------	-----------------------------------



NE-2, 09 JUL 2026 to 06 AUG 2026

NE-2, 09 JUL 2026 to 06 AUG 2026

Use I-PVO DME when on the LOC course.
VGSI and ILS glidepath not coincident (VGSI Angle 3.00/TCH 71).

ELEV	75	TDZE	75
------	----	------	----

SMITS ACY 11	ACY R-090
--------------	-----------

SMITS ACY 11	ACY R-090
--------------	-----------

REIL Rwy 31	HIRL Rwy 4-22 and 13-31	TDZL/CL Rwy 13			
FAF to MAP 4.6 NM					
Knots	120	140	160	180	200
Min:Sec	2:18	1:58	1:43	1:32	1:23

HI-ILS Y or LOC Y RWY 13