

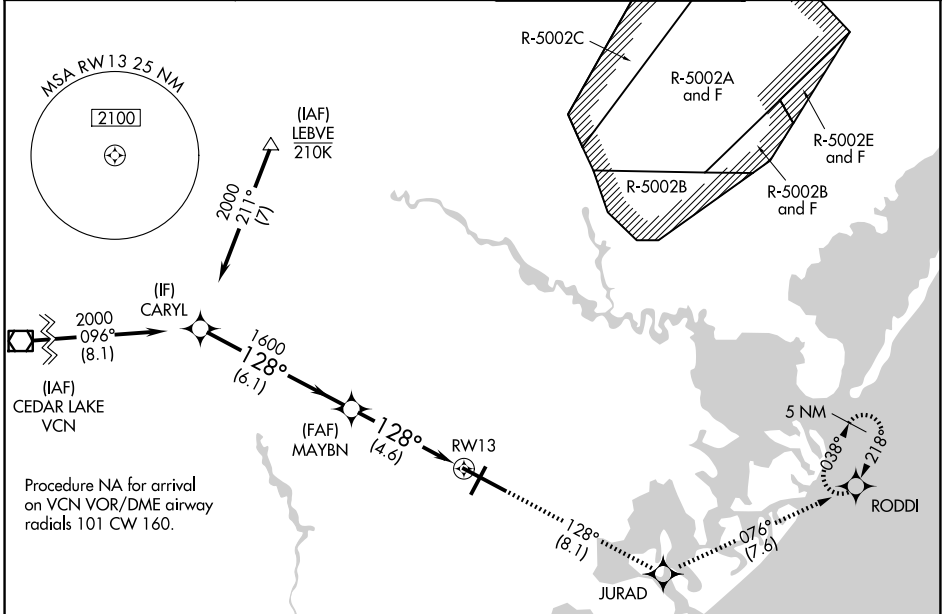
APP CRS	Rwy Ldg	<b>10001</b>
<b>128°</b>	TDZE	<b>75</b>
	Apt Elev	<b>75</b>

# RNAV (RNP) Z RWY 13

ATLANTIC CITY INTL (ACY)

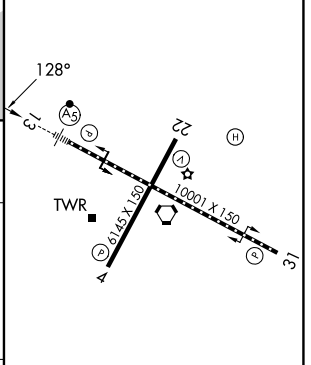
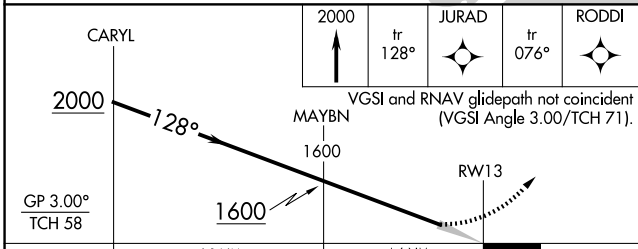
<p>For uncompensated Baro-VNAV systems, procedure NA below -13°C (9°F) or above 54°C (130°F). GPS required. For inop ALS, increase RNP 0.30 all Cats visibility to RVR 6000.</p>	<p>MALSR</p>	<p>MISSED APPROACH: Climb to 2000 on track 128° to JURAD and on track 076° to RODDI and hold.</p>

<p>ATIS</p> <p><b>125.725 316.15</b></p>	<p>ATLANTIC CITY APP CON</p> <p><b>124.6 327.125</b></p>	<p>ATLANTIC CITY TOWER</p> <p><b>120.3 239.0</b></p>	<p>GND CON</p> <p><b>121.9 284.6</b></p>
--	--	--	--



Procedure NA for arrival on VCN VOR/DME airway radials 101 CW 160.

ELEV	75	<b>D</b>	TDZE	75
------	----	----------	------	----



CATEGORY	A	B	C	D
RNP 0.30 DA		442/40	367 (400-¾)	

TDZL/RCLS Rwy 13  
HIRL Rwy 4-22 and 13-31  
REIL Rwy 31

## AUTHORIZATION REQUIRED

NE-2, 09 JUL 2026 to 06 AUG 2026

NE-2, 09 JUL 2026 to 06 AUG 2026