

|  |                        |   |
|--|------------------------|---|
| WAAS<br>CH <b>49116</b><br><b>W24A</b> | APP CRS<br><b>236°</b> | Rwy Ldg <b>5000</b><br>TDZE <b>403</b><br>Apt Elev <b>407</b> |
|--|------------------------|---|

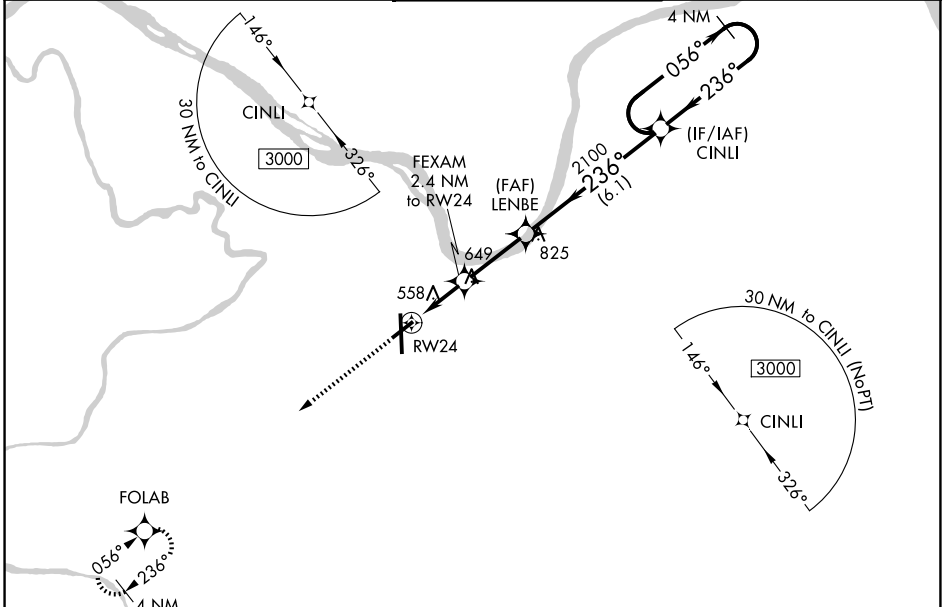
# RNAV (GPS) RWY 24

OWENSBORO/DAVIESS COUNTY RGNL (OWB)

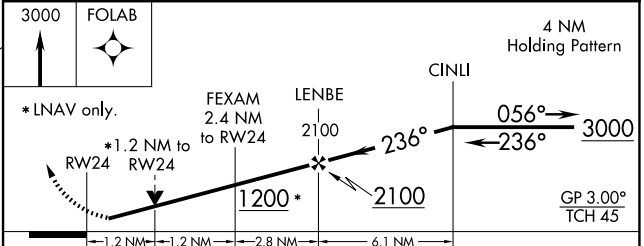
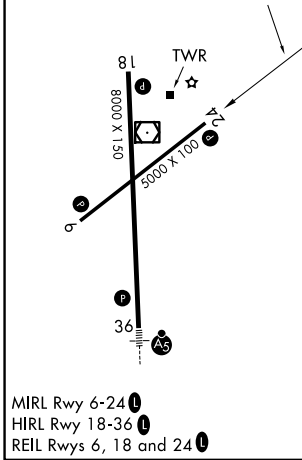
**⚠** For uncompensated Baro-VNAV systems, LNAV/VNAV NA below -15°C (5°F) or above 54°C (130°F). DME/DME RNP-0.3 NA. Rwy 24 helicopter visibility reduction below ¾ SM NA. When local altimeter setting not received, use Evansville altimeter setting: increase LPV DA to 712 feet and all Cats visibility ¼ mile; increase LNAV/VNAV DA to 902 feet and all Cats visibility ¼ mile; increase all MDA 60 feet and LNAV Cats C/D and Circling Cats C/D visibility ¼ mile. Baro-VNAV and VDP NA when using Evansville altimeter setting.

**MISSED APPROACH:**  
Climb to 3000 direct FOLAB and hold.

|                            |  |   |                         |                         |
|----------------------------|--|---|-------------------------|-------------------------|
| AWOS-3PT<br><b>119.025</b> | EVANSVILLE APP CON *<br><b>124.025 290.9</b> | OWENSBORO TOWER *<br><b>120.7 (CTAF) 0 251.15</b> | GND CON<br><b>121.7</b> | UNICOM<br><b>122.95</b> |
|----------------------------|--|---|-------------------------|-------------------------|



|          |          |          |
|----------|----------|----------|
| ELEV 407 | <b>D</b> | TDZE 403 |
|----------|----------|----------|



| CATEGORY     | A                    | B                     | C                     | D                       |
|--------------|----------------------|-----------------------|-----------------------|-------------------------|
| LPV DA       |                      | 653-¾                 | 250 (300-¾)           |                         |
| LNAV/VNAV DA |                      | 843-1½                | 440 (500-1½)          |                         |
| LNAV MDA     | 820-1                | 417 (500-1)           | 820-1½ 417 (500-1½)   |                         |
| CIRCLING     | 860-1<br>453 (500-1) | 1120-1<br>713 (800-1) | 1140-2<br>733 (800-2) | 1140-2¼<br>733 (800-2¼) |

SE-1, 09 JUL 2026 to 06 AUG 2026

SE-1, 09 JUL 2026 to 06 AUG 2026