

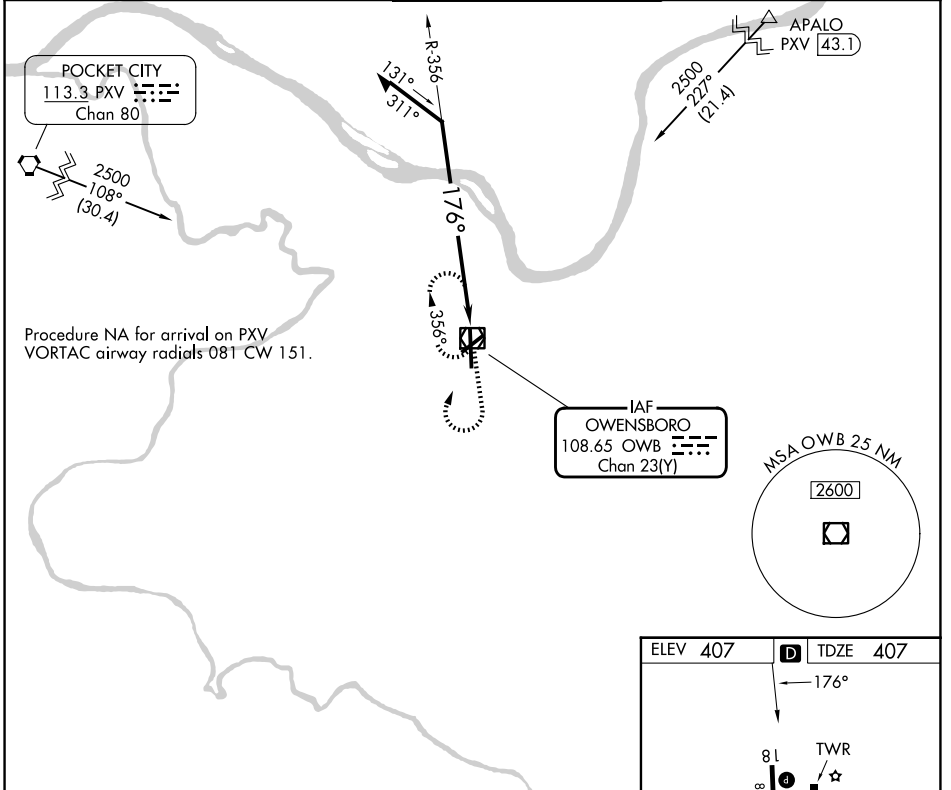
VOR/DME OWB <b>108.65</b> Chan <b>23 (Y)</b>	APP CRS <b>176°</b>	Rwy Ldg TDZE Apt Elev <b>8000</b> <b>407</b> <b>407</b>
--	------------------------	--

# VOR RWY 18

OWENSBORO/DAVIESS COUNTY RGNL (OWB)

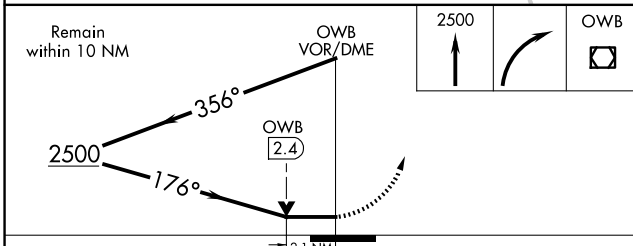
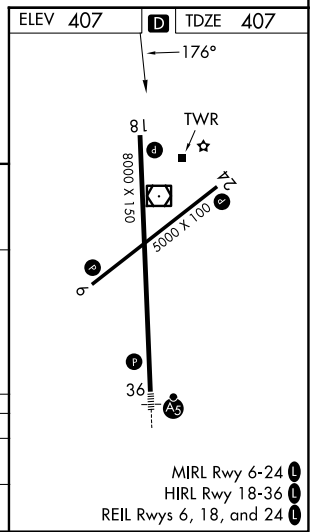
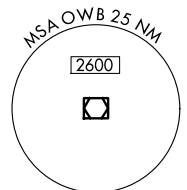
MISSED APPROACH: Climb to 2500 then right turn direct OWB VOR/DME and hold.

AWOS-3PT <b>119.025</b>	EVANSVILLE APP CON * <b>124.025 290.9</b>	OWENSBORO TOWER * <b>120.7 (CTAF) 251.15</b>	GND CON <b>121.7</b>	UNICOM <b>122.95</b>
----------------------------	--	---	-------------------------	-------------------------



Procedure NA for arrival on PXV  
VORTAC airway radials 081 CW 151.

IAF  
OWENSBORO  
108.65 OWB  
Chan 23(Y)



CATEGORY	A	B	C	D
S-18	1120-1	713 (800-1)	1120-2	713 (800-2)
CIRCLING	1120-1	713 (800-1)	1140-2 733 (800-2)	1140-2 1/4 733 (800-2 1/4)

# VOR RWY 18

SE-1, 09 JUL 2026 to 06 AUG 2026

SE-1, 09 JUL 2026 to 06 AUG 2026

MIRL Rwy 6-24  
HIRL Rwy 18-36  
REIL Rwy 6, 18, and 24