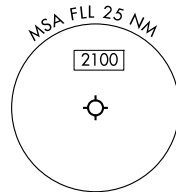


RNAV 1 - DME/DME/IRU or GPS.  
RADAR required for non-GPS equipped aircraft.

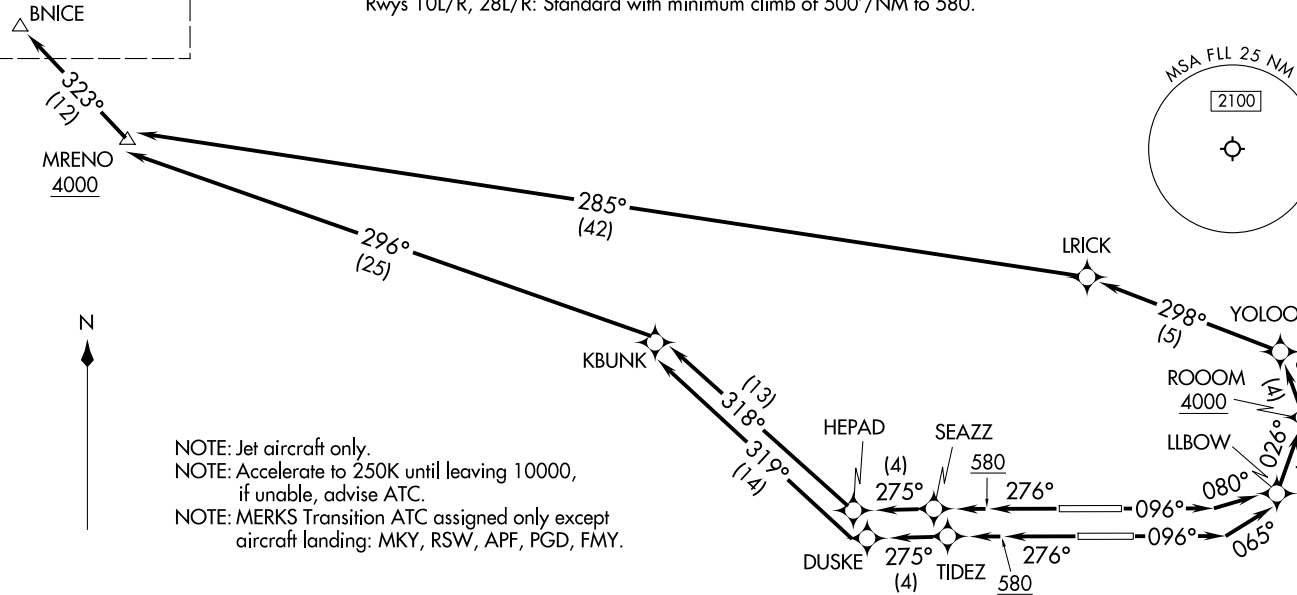
**TOP ALTITUDE:  
4000**

MIAMI DEP CON 126.05 251.1  
D-ATIS 135.0  
CLNC DEL 128.4  
CPDLC  
GND CON 121.4  
FORT LAUDERDALE TOWER 119.3 257.8

**TAKEOFF MINIMUMS**  
Rwys 10L/R, 28L/R: Standard with minimum climb of 500'/NM to 580.



See following page for transition routes.



NOTE: Jet aircraft only.  
NOTE: Accelerate to 250K until leaving 10000, if unable, advise ATC.  
NOTE: MERKS Transition ATC assigned only except aircraft landing: MKY, RSW, APF, PGD, FMY.

NOTE: Chart not to scale.

(CONTINUED ON FOLLOWING PAGE)

BNICE TWO DEPARTURE (RNAV) Departure Routes  
(BNICE2, BNICE) 21 MAR 24  
FORT LAUDERDALE/HOLLYWOOD INTL (FLL)

(BNICE2, BNICE) 241 09  
BNICE TWO DEPARTURE (RNAV) Departure Routes  
AL-744 (FAA)  
FORT LAUDERDALE/HOLLYWOOD INTL (FLL)  
FORT LAUDERDALE, FLORIDA

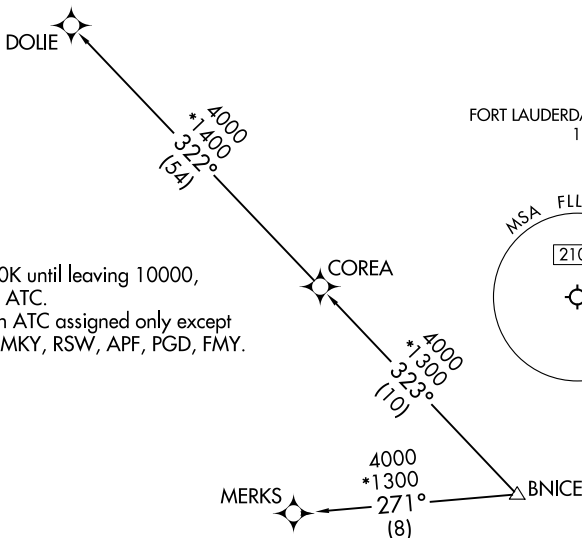
# BNICE TWO DEPARTURE (RNAV) Transition Routes

FORT LAUDERDALE, FLORIDA

RNAV 1 - DME/DME/IRU or GPS.  
RADAR required for non-GPS equipped aircraft.

**TOP ALTITUDE:  
4000**

MIAMI DEP CON	126.05	251.1
D-ATIS		135.0
CLNC DEL		128.4
CPDLC		121.4
GND CON		121.4
FORT LAUDERDALE TOWER		119.3
		257.8



NOTE: Jet aircraft only.  
 NOTE: Accelerate to 250K until leaving 10000, if unable, advise ATC.  
 NOTE: MERKS Transition ATC assigned only except aircraft landing: MKY, RSW, APF, PGD, FMY.

SE-3. 09 JUL 2026 to 06 AUG 2026

SE-3. 09 JUL 2026 to 06 AUG 2026



## DEPARTURE ROUTE DESCRIPTION

SEE ADDITIONAL REQUIREMENTS ON AAUP

**TAKEOFF RUNWAY 10L:** Climb on heading 096° to intercept course 080° to LLBOW, then on track 026° to cross ROOOM at or above 4000, then on track 347° to YOLOO, then on track 298° to LRICK, then on track 285° to cross MRENO at or above 4000, thence. . .

**TAKEOFF RUNWAY 10R:** Climb on heading 096° to intercept course 065° to LLBOW, then on track 026° to cross ROOOM at or above 4000, then on track 347° to YOLOO, then on track 298° to LRICK, then on track 285° to cross MRENO at or above 4000, thence. . .

**TAKEOFF RUNWAY 28L:** Climb on heading 276° to 580, then direct TIDEZ, then on track 275° to DUSKE, then on track 319° to KBUNK, then on track 296° to cross MRENO at or above 4000, thence. . .

**TAKEOFF RUNWAY 28R:** Climb on heading 276° to 580, then direct SEAZZ, then on track 275° to HEPAD, then on track 318° to KBUNK, then on track 296° to cross MRENO at or above 4000, thence. . .

. . . on track 323° to BNICE then on assigned transition, maintain 4000, expect clearance to filed altitude within 10 minutes after departure.

- COREA TRANSITION (BNICE2.COREA)
- DOLIE TRANSITION (BNICE2.DOLIE)
- MERKS TRANSITION (BNICE2.MERKS)

# BNICE TWO DEPARTURE (RNAV) Transition Routes

FORT LAUDERDALE, FLORIDA