

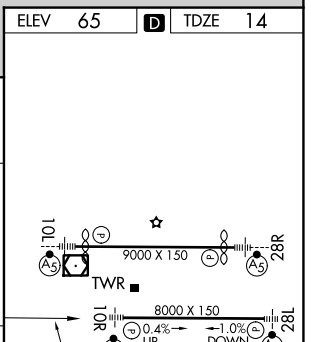
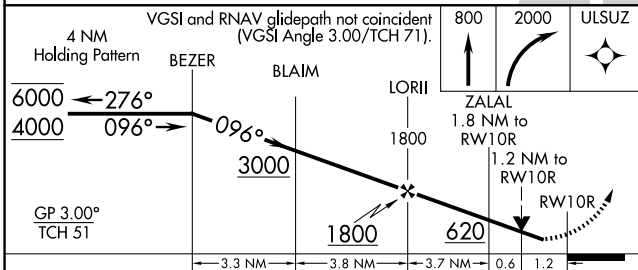
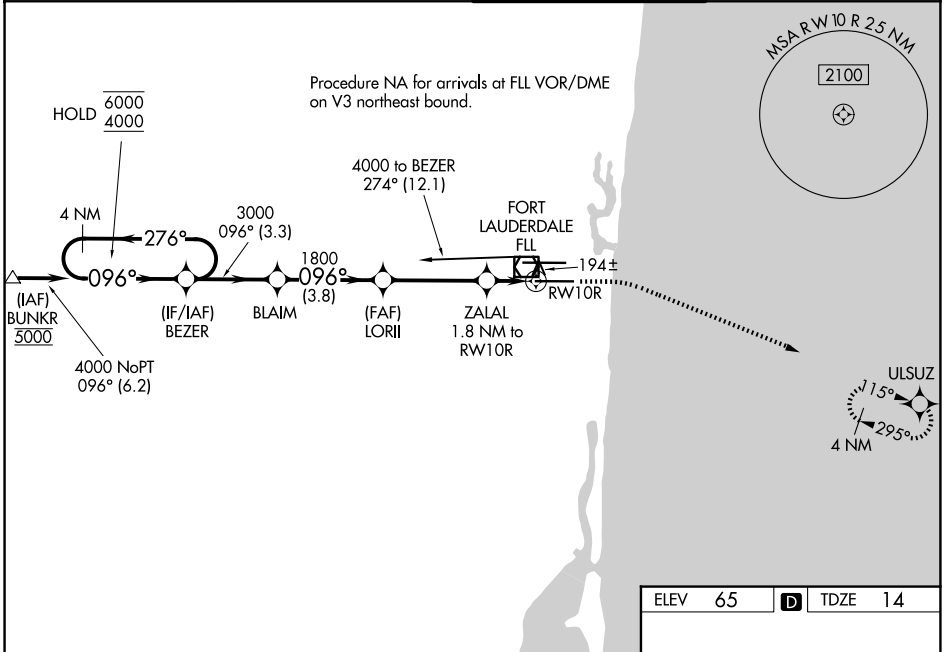
WAAS CH 63236 W10B	APP CRS 096°	Rwy Ldg TDZE Apt Elev	8000 14 65
--	------------------------	-----------------------------	---------------------------------------

RNAV (GPS) RWY 10R

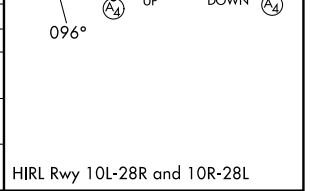
FORT LAUDERDALE/HOLLYWOOD INTL (FLL)

RNP APCH-GPS.	MALSF 	MISSED APPROACH: Climb to 800 then climbing right turn to 2000 direct ULSUZ and hold.
▽ LNAV procedure NA during simultaneous operations. Rwy 10R helicopter visibility reduction below RVR 4000 NA. Inop table does not apply to LPV all Cats. For uncompensated Baro-VNAV systems, LNAV/VNAV NA below 7° C or above 54° C. For inop ALS, increase LNAV Cats C and D visibility to 1½ SM. Use of FD or AP required during simultaneous operations.		

D-ATIS 135.0	MIAMI APP CON 133.775 285.6	FORT LAUDERDALE TOWER 119.3 257.8	GND CON 121.4
------------------------	---------------------------------------	---	-------------------------



CATEGORY	A	B	C	D
LPV DA	264/40		250 (200-¾)	
LNAV/VNAV DA	355/40		341 (300-¾)	
LNAV MDA	460/40	446 (400-¾)	460/55	446 (400-1)
CIRCLING	680-1	615 (700-1)	800-2 735 (800-2)	800-2¼ 735 (800-2¼)



SE-3, 09 JUL 2026 to 06 AUG 2026

SE-3, 09 JUL 2026 to 06 AUG 2026