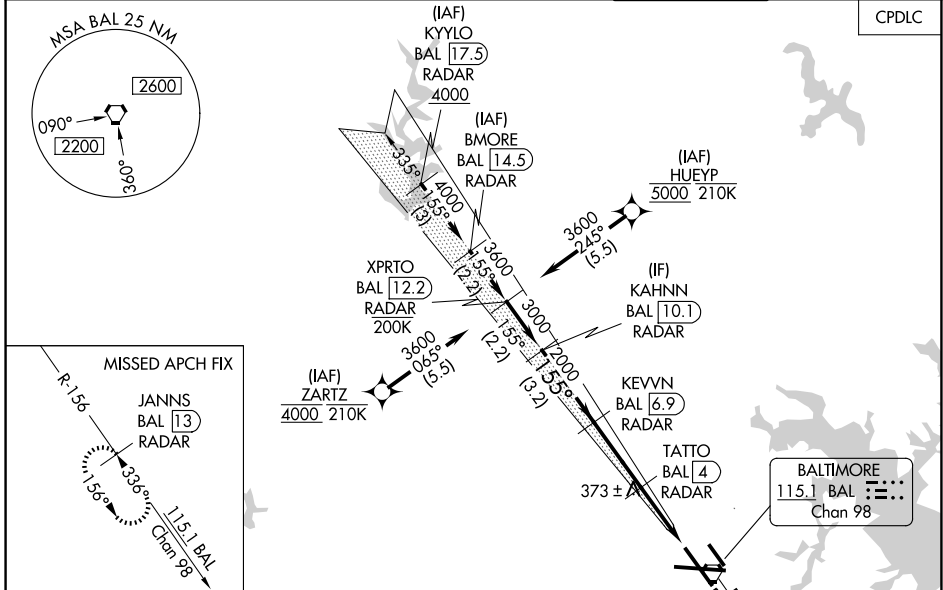


LOC I-FND <b>111.7</b>	APP CRS <b>155°</b>	Rwy Ldg TDZE Apt Elev	<b>8301</b> <b>138</b> <b>143</b>
---------------------------	------------------------	-----------------------------	---

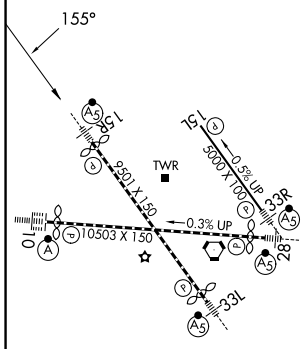
BALTIMORE/  
WASHINGTON INTL THURGOOD MARSHALL (BWI)  
**ILS or LOC RWY 15R**

RNP APCH - GPS. From HUEYP or ZARTZ.	MALSR 	MISSED APPROACH: Climb to 2500 on BAL VORTAC R-156 to JANNIS/BAL 13 DME/RADAR and hold.
DME or RADAR required. RADAR required for procedure entry at KYILO or BMORE.		
Simultaneous approach authorized with Rwy 15L. DME from BAL VORTAC. For inop ALS, increase LOC Cat C/D visibility to 1 1/2 SM. * RVR 1800 authorized with use of FD or AP or HUD to DA.		

D-ATIS <b>115.1 127.8</b>	POTOMAC APP CON (020°-100°) <b>119.0 282.275</b> (101°-130°) <b>124.55 317.425</b>	(131°-180°) <b>119.7 290.475</b> (181°-019°) <b>128.7 307.9</b>	BALTIMORE TOWER <b>119.4 257.8</b>	GND CON <b>121.9</b>	CLNC DEL <b>118.05</b>
------------------------------	--	--	---------------------------------------	-------------------------	---------------------------



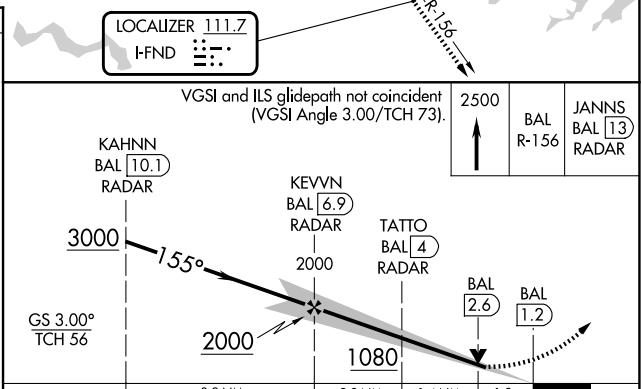
ELEV 143	<b>D</b>	TDZE 138
----------	----------	----------



TDZ/CL Rwy 10 and 33L  
REIL Rwy 15L and 33R  
HIRL all Rwy

FAF to MAP 5.7 NM

Knots	60	90	120	150	180
Min:Sec	5:42	3:48	2:51	2:17	1:54



CATEGORY	A	B	C	D
S-ILS 15R*	338/24 200 (200-1/2)			
S-LOC 15R	640/24	502 (500-1/2)	640/55	502 (500-1)
CIRCLING	640-1 497 (500-1)	660-1 517 (600-1)	700-1 1/2 557 (600-1 1/2)	880-2 1/4 737 (800-2 1/4)

NE-3, 09 JUL 2026 to 06 AUG 2026

NE-3, 09 JUL 2026 to 06 AUG 2026