

LOC I-OEH	APP CRS	Rwy Ldg	9803
109.7	285°	TDZE	143
		Apt Elev	143

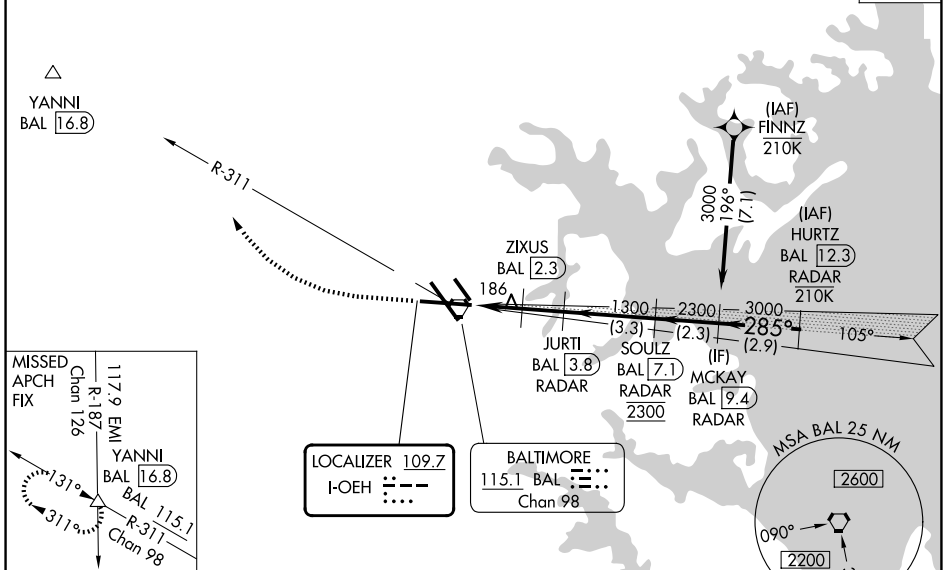
BALTIMORE/
WASHINGTON INTL THURGOOD MARSHALL (BWI)

ILS or LOC RWY 28

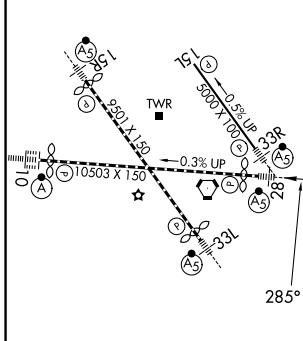
DME or RADAR required.		MALSR	MISSED APPROACH: Climb to 1500 then climbing right turn to 2600 on heading 319° and BAL VORTAC R-311 to YANNI INT/ BAL 16.8 DME and hold.
<p>▼ For inop ALS, increase S-LOC 28 Cat C/D visibility to 1 3/4 SM and increase ZIXUS fix S-LOC 28 Cat C/D visibility to RVR 4500.</p> <p>▲ *RVR 1800 authorized with use of FD or AP or HUD to DA.</p>			

D-ATIS	POTOMAC APP CON	BALTIMORE TOWER	GND CON	CLNC DEL
115.1 127.8	119.0 282.275 124.55 317.425 (101°-130°) 119.7 290.475 128.7 307.9 (181°-019°)	119.4 257.8	121.9	118.05

CPDLC



ELEV 143	D	TDZE 143
----------	----------	----------



TDZ/CL Rwy 10 and 33L	REIL Rwy 15L and 33R	HIRL all Rwy			
FAF to MAP 3.5 NM					
Knots	60	90	120	150	180
Min:Sec	3:30	2:20	1:45	1:24	1:10
CATEGORY	A		B		D
S-ILS 28 *	343/24 200 (200-1/2)				
S-LOC 28	620/24 477 (500-1/2)		620/50 477 (500-1)		
CIRCLING	660-1 517 (600-1)		700-1 1/2 557 (600-1 1/2)		880-2 1/4 737 (800-2 1/4)
ZIXUS FIX MINIMUMS (DME REQUIRED)					
S-LOC 28	460/24 317 (400-1/2)				
CIRCLING	660-1 517 (600-1)		700-1 1/2 557 (600-1 1/2)		880-2 1/4 737 (800-2 1/4)

ILS or LOC RWY 28

NE-3, 09 JUL 2026 to 06 AUG 2026

NE-3, 09 JUL 2026 to 06 AUG 2026