

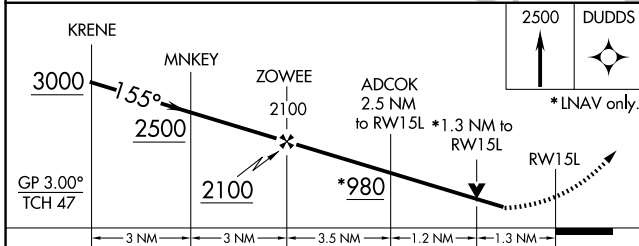
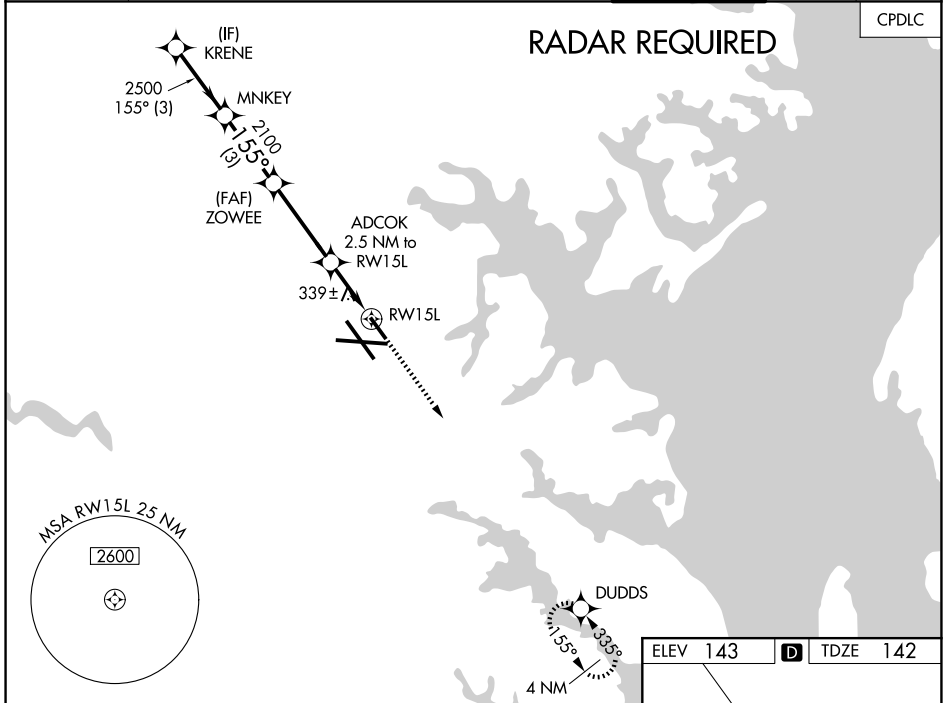
WAAS CH 40108 W15A	APP CRS 155°	Rwy Ldg TDZE Apt Elev	5000 142 143
--	------------------------	-----------------------------	---

BALTIMORE/ **RNAV (GPS) RWY 15L**
WASHINGTON INTL THURGOOD MARSHALL (BWI)

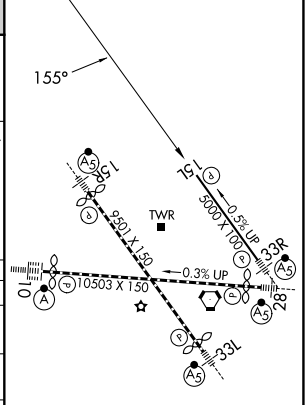
▼ For uncompensated Baro-VNAV systems, LNAV/VNAV NA below -13°C (9°F) or above 54°C (130°F). DME/DME RNP-0.3 NA. Helicopter visibility reduction below RVR 4000 NA. Simultaneous approach authorized. Use of FD or AP providing RNAV track guidance required during simultaneous operations. LNAV procedure NA during simultaneous operations.

MISSED APPROACH: Climb to 2500 direct DUDDS and hold.

D-ATIS 115.1 127.8	POTOMAC APP CON (020°-100°) 119.7 290.475 (131°-180°) (101°-130°) 128.7 307.9 (181°-019°)	BALTIMORE TOWER 119.4 257.8	GND CON 121.9	CLNC DEL 118.05
------------------------------	---	--	-------------------------	---------------------------



ELEV 143	D	TDZE 142
----------	----------	----------



CATEGORY	A	B	C	D
LPV DA	544-1 $\frac{3}{4}$	402 (500-1 $\frac{1}{2}$)		NA
LNAV/VNAV DA	656-1 $\frac{3}{4}$	514 (600-1 $\frac{3}{4}$)		NA
LNAV MDA	600/55	458 (500-1)		NA
CIRCLING	640-1 497 (500-1)	660-1 517 (600-1)		NA

TDZ/CL Rwy 10 and 33L
REIL Rwy 15L and 33R
HIRL all Rwy

NE-3, 09 JUL 2026 to 06 AUG 2026

NE-3, 09 JUL 2026 to 06 AUG 2026