

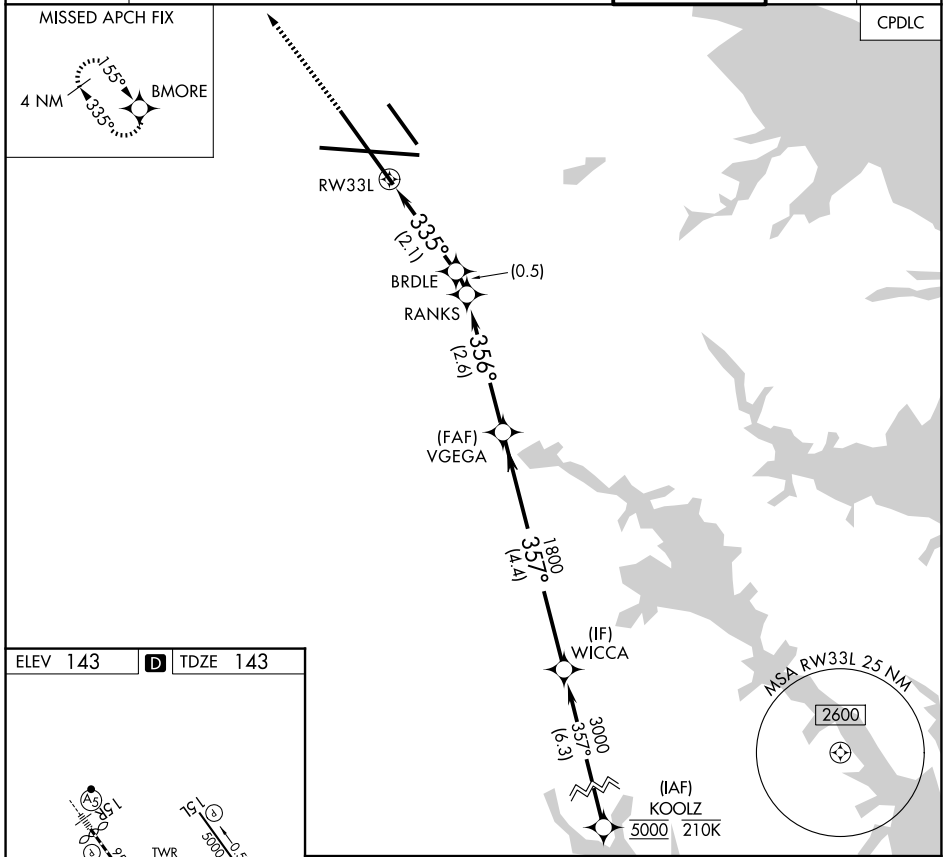
RNAV (RNP) X RWY 33L

BALTIMORE/WASHINGTON INTL THURGOOD MARSHALL (BWI)

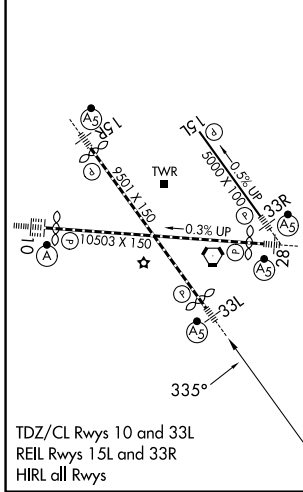
APP CRS	Rwy Ldg	8301
335°	TDZE	143
	Apt Elev	143

RNP AR APCH - GPS, RF.	MALSR	MISSED APPROACH: Climb to 3000 direct BMORE and hold.
▼ For uncompensated Baro-VNAV systems, procedure NA below -11°C or above 54°C.		

D-ATIS	POTOMAC APP CON	BALTIMORE TOWER	GND CON	CLNC DEL
115.1 127.8	(020°-100°) 119.7 290.475 (131°-180°) (101°-130°) 128.7 307.9 (181°-019°)	119.4 257.8	121.9	118.05



ELEV 143	D	TDZE 143
----------	----------	----------



3000	BMORE	VGS1 and RNAV glidepath not coincident (VGS1 Angle 3.00/TCH 72).		WICCA
		BRDLE	RANKS	VEGGA
		839	986	1800
				357°
				1800
				GP 3.00°
				TCH 55
		2.1 NM	0.5 NM	2.6 NM
				4.4 NM
CATEGORY	A	B	C	D
RNP 0.30 DA	479/26 336 (400-1/2)			
AUTHORIZATION REQUIRED				

RNAV (RNP) X RWY 33L

NE-3, 09 JUL 2026 to 06 AUG 2026

NE-3, 09 JUL 2026 to 06 AUG 2026