

# RNAV (RNP) Z RWY 15R

BALTIMORE/WASHINGTON INTL THURGOOD MARSHALL (BWI)

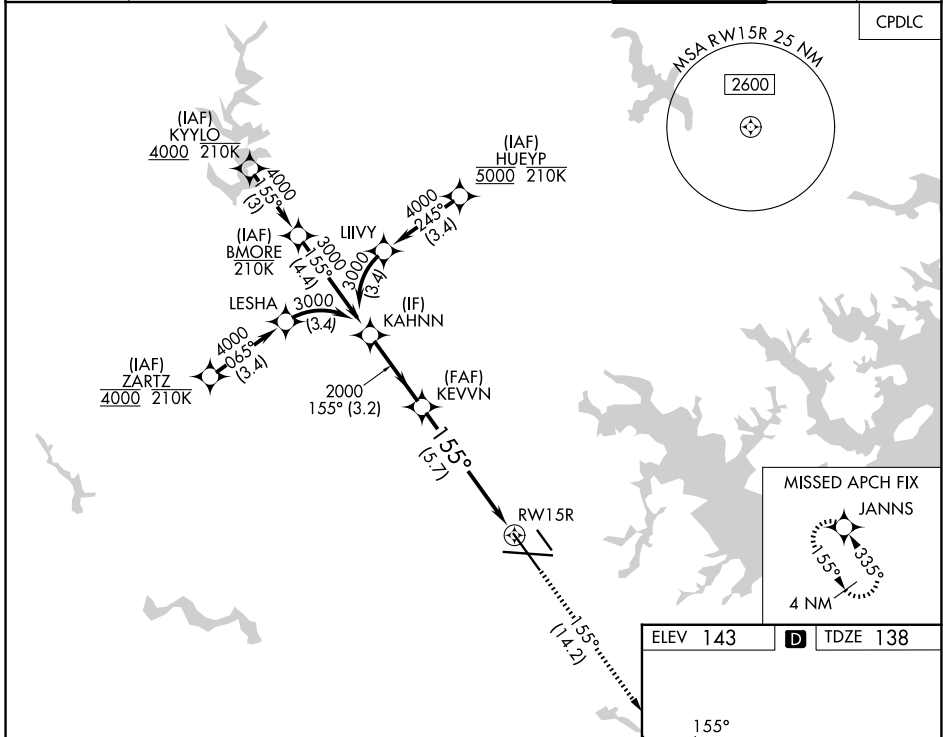
APP CRS	Rwy Ldg	<b>8301</b>
<b>155°</b>	TDZE	<b>138</b>
	Apt Elev	<b>143</b>

RNP AR APCH - GPS.

▼ For uncompensated Baro-VNAV systems, procedure NA below -11°C or above 54°C.  
 Simultaneous approach authorized with Rwy 15L.  
 For inop ALS, increase RNP 0.11 DA all Cats visibility to RVR 5500.

MALSR	MISSED APPROACH: Climb to 2500 on track 155° to JANNIS and hold.

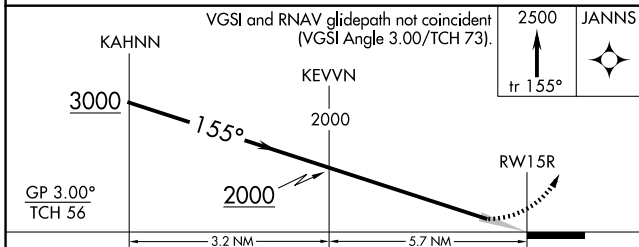
D-ATIS	POTOMAC APP CON	BALTIMORE TOWER	GND CON	CLNC DEL
<b>115.1 127.8</b>	<b>119.0 282.275</b> (020°-100°) <b>119.7 290.475</b> (131°-180°) <b>124.55 317.425</b> (101°-130°) <b>128.7 307.9</b> (181°-019°)	<b>119.4 257.8</b>	<b>121.9</b>	<b>118.05</b>



NE-3, 09 JUL 2026 to 06 AUG 2026

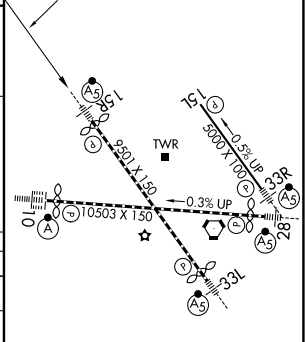
NE-3, 09 JUL 2026 to 06 AUG 2026

ELEV 143	<b>D</b>	TDZE 138
----------	----------	----------



CATEGORY	A	B	C	D
RNP 0.11 DA		513/35	375 (400-5%)	
RNP 0.30 DA		587/45	449 (500-7%)	

## AUTHORIZATION REQUIRED



TDZ/CL Rwy 10 and 33L  
 REIL Rwy 15L and 33R  
 HIRL all Rwy's

# RNAV (RNP) Z RWY 15R