

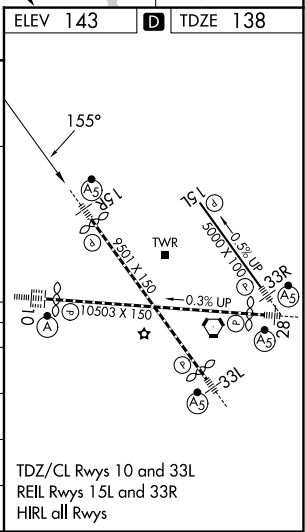
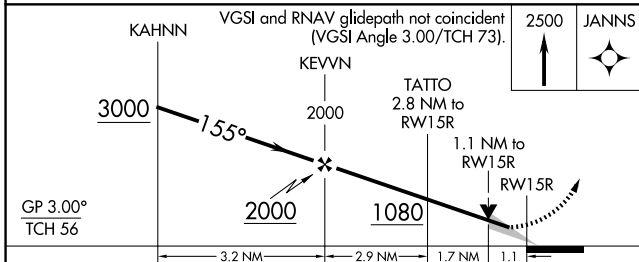
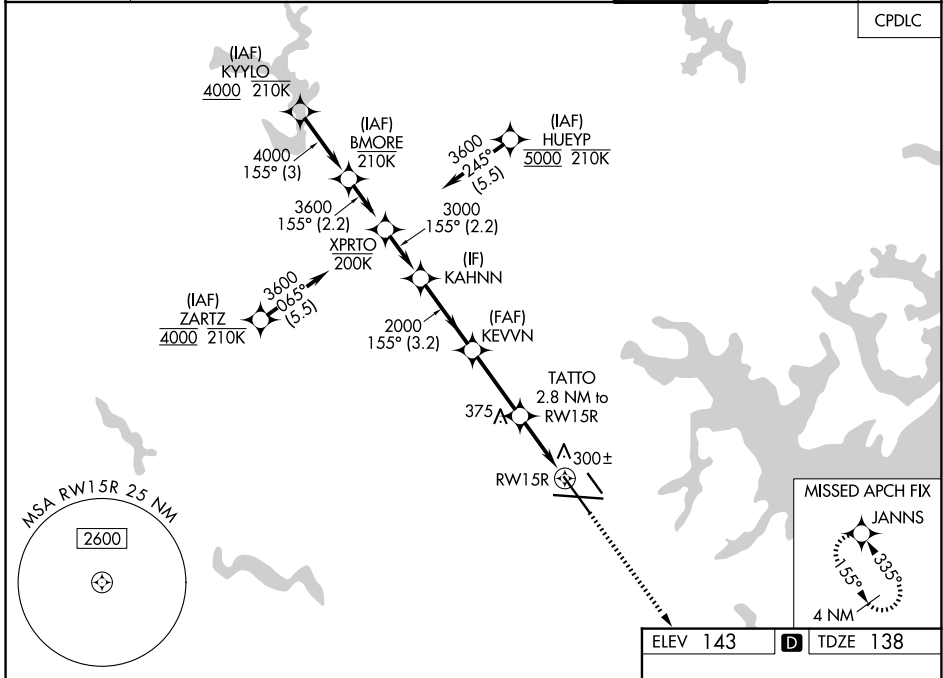
RNAV (GPS) Y RWY 15R

BALTIMORE/WASHINGTON INTL THURGOOD MARSHALL (BWI)

WAAS CH 66007 W15B	APP CRS 155°	Rwy Ldg TDZE 138 Apt Elev 143	8301
----------------------------------------	------------------------	---------------------------------------------------	-------------

RNP APCH - GPS.	MALSR 	MISSED APPROACH: Climb to 2500 direct JANNIS and hold.
<p>▼ For uncompensated Baro-VNAV systems, LNAV/VNAV NA below -11°C or above 54°C. ▲ Simultaneous approach authorized with Rwy 15L. For inop ALS, increase LNAV/VNAV all Cats visibility to RVR 6000. * RVR 1800 authorized with use of FD or AP or HUD to DA.</p>		

D-ATIS 115.1 127.8	POTOMAC APP CON 119.0 282.275 (020°-100°) 124.55 317.425 (101°-130°)	119.7 290.475 (131°-180°) 128.7 307.9 (181°-019°)	BALTIMORE TOWER 119.4 257.8	GND CON 121.9	CLNC DEL 118.05
------------------------------	------------------------------------------------------------------------------------------	--------------------------------------------------------------------	---------------------------------------	-------------------------	---------------------------



CATEGORY	A	B	C	D
LPV DA	*338/24		200 (200-½)	
LNAV/VNAV DA	557/40		419 (500-¾)	
LNAV MDA	560/24	422 (500-½)	560/40	422 (500-¾)
CIRCLING	640-1 497 (500-1)	660-1 517 (600-1)	700-1½ 557 (600-1½)	880-2¼ 737 (800-2¼)

TDZ/CL Rwy 10 and 33L
REIL Rwy 15L and 33R
HIRL all Rwy

RNAV (GPS) Y RWY 15R

NE-3, 09 JUL 2026 to 06 AUG 2026

NE-3, 09 JUL 2026 to 06 AUG 2026