

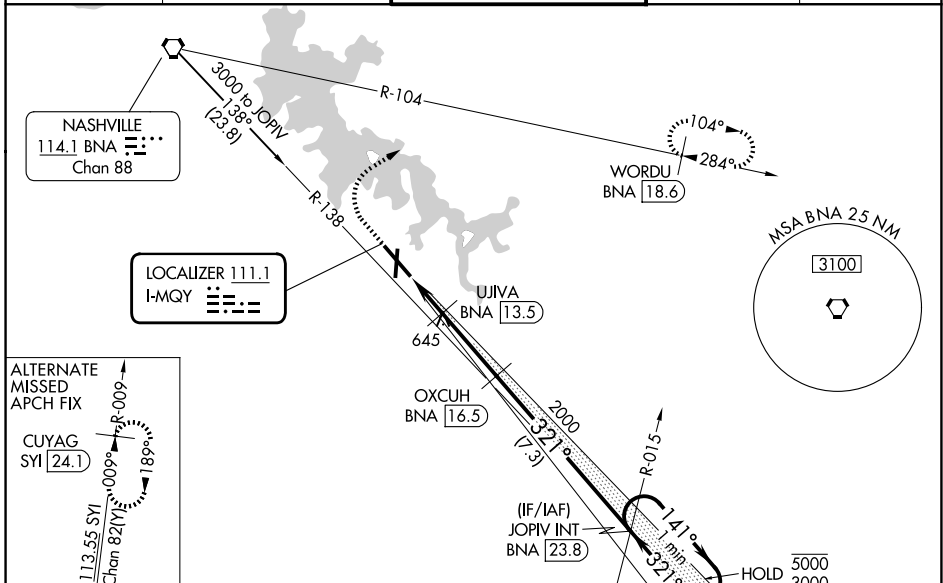
LOC I-MQY 111.1	APP CRS 321°	Rwy Ldg TDZE Apt Elev	8038 518 543
---------------------------	------------------------	-----------------------------	---

ILS or LOC RWY 32

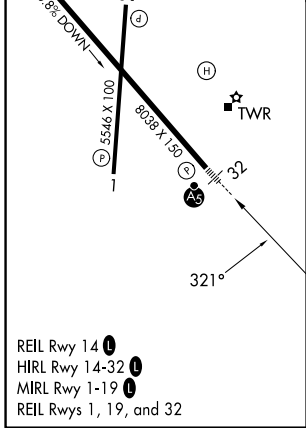
SMYRNA (MQY)

DME required.		MALSR	MISSED APPROACH: Climb to 1500 then climbing right turn to 3000 on heading 060° and on BNA VORTAC R-104 to WORDU/ BNA 18.6 DME and hold.
NA Circling Rwy 14 NA at night. DME from BNA VORTAC, simultaneous reception of I-MQY and BNA DME required. For Inop ALS, increase S-LOC 32 Cats C/D visibility to 1 SM.			

AWOS-3PT 119.125	NASHVILLE APP CON 118.4 360.7	SMYRNA TOWER ★ 118.5 (CTAF) 0 233.1	GND CON 121.4	UNICOM 122.95
----------------------------	---	---	-------------------------	-------------------------



ELEV 543	TDZE 518
----------	----------



1500	3000	BNA R-104	WORDU BNA 18.6	VGSi and ILS glidepath not coincident (VGSi Angle 3.00/TCH 57).	
↑	hdg 060°	OXCUH BNA 16.5	JOPIV INT BNA 23.8	One Minute Holding Pattern	
		UJIVA BNA 13.5	2000	141° → 5000	← 321° 3000
		BNA 11.7	1100	GS 2.83° TCH 51	
		1 NM	0.8 NM	3 NM	7.3 NM
CATEGORY	A	B	C	D	
S-ILS 32	718-1/2 200 (200-1/2)				
S-LOC 32	900-1/2	382 (400-1/2)	900-5/8	382 (400-5/8)	
CIRCLING	1100-1 557 (600-1)	1180-1 637 (700-1)	1260-2 717 (800-2)	1480-3 937 (1000-3)	

SE-1, 09 JUL 2026 to 06 AUG 2026

SE-1, 09 JUL 2026 to 06 AUG 2026