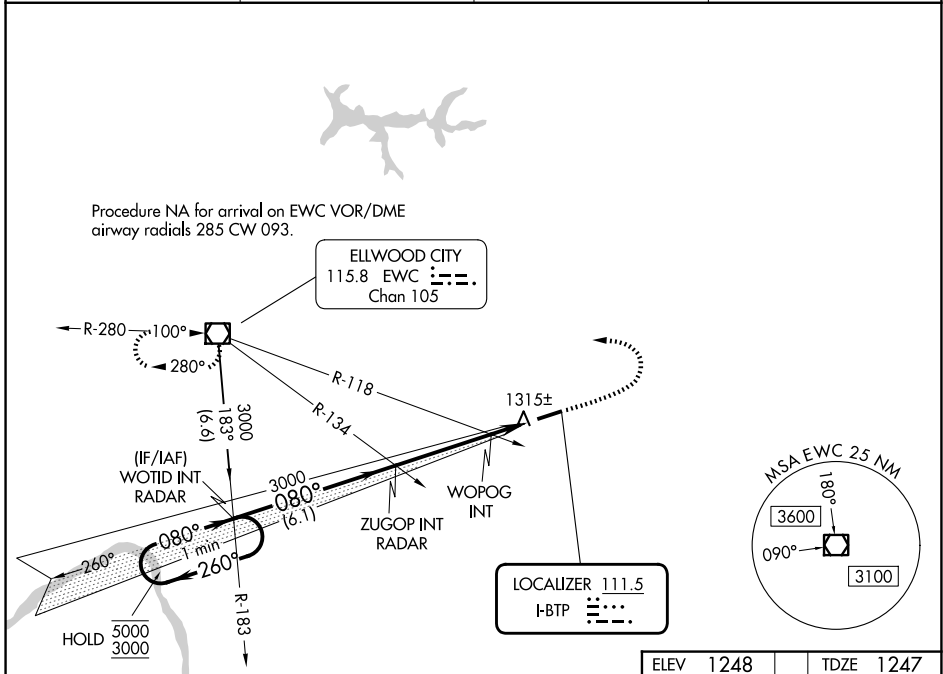


LOC I-BTP <b>111.5</b>	APP CRS <b>080°</b>	Rwy Ldg 4801
		TDZE 1247
		Apt Elev 1248

**ILS or LOC RWY 8**  
PITTSBURGH/BUTLER RGNL (BTP)

<p>Rwy 8 helicopter visibility reduction below 3/4 SM NA. Inop table does not apply to S-ILS 8 all Cats.</p>	<p>MALSF</p>	<p>MISSED APPROACH: Climb to 1800 then climbing left turn to 3000 direct EWC VOR/DME and hold.</p>	
			<p>AWOS-3PT <b>121.45</b></p>



NE-4, 09 JUL 2026 to 06 AUG 2026

NE-4, 09 JUL 2026 to 06 AUG 2026

	ELEV 1248	TDZE 1247				
One Minute Holding Pattern						
<p>5000 ← 260°</p> <p>3000 → 080°</p> <p>GS 3.00°</p> <p>TCH 54</p>	<p>3000</p> <p>3000</p> <p>1740</p>	<p>1800</p> <p>3000</p> <p>EWC</p>				
	6.1 NM	3.6 NM				
	1.8 NM					
CATEGORY	A	B	C	D		
S-ILS 8		1497-3/4	250 (300-3/4)			
S-LOC 8	1740-3/4	493 (500-3/4)	1740-1 1/8	493 (500-1 1/8)		
CIRCLING	1820-1	572 (600-1)	2080-2 1/2	2080-2 3/4		
			832 (900-2 1/2)	832 (900-2 3/4)		
WOPOG FIX MINIMUMS (DUAL VOR RECEIVERS REQUIRED)						
S-LOC 8		1600-3/4	353 (400-3/4)			
CIRCLING	1820-1	572 (600-1)	2080-2 1/2	2080-2 3/4		
			832 (900-2 1/2)	832 (900-2 3/4)		
	FAF to MAP 5.4 NM					
	Knots	60	90	120	150	180
	Min:Sec	5:24	3:36	2:42	2:10	1:48

