

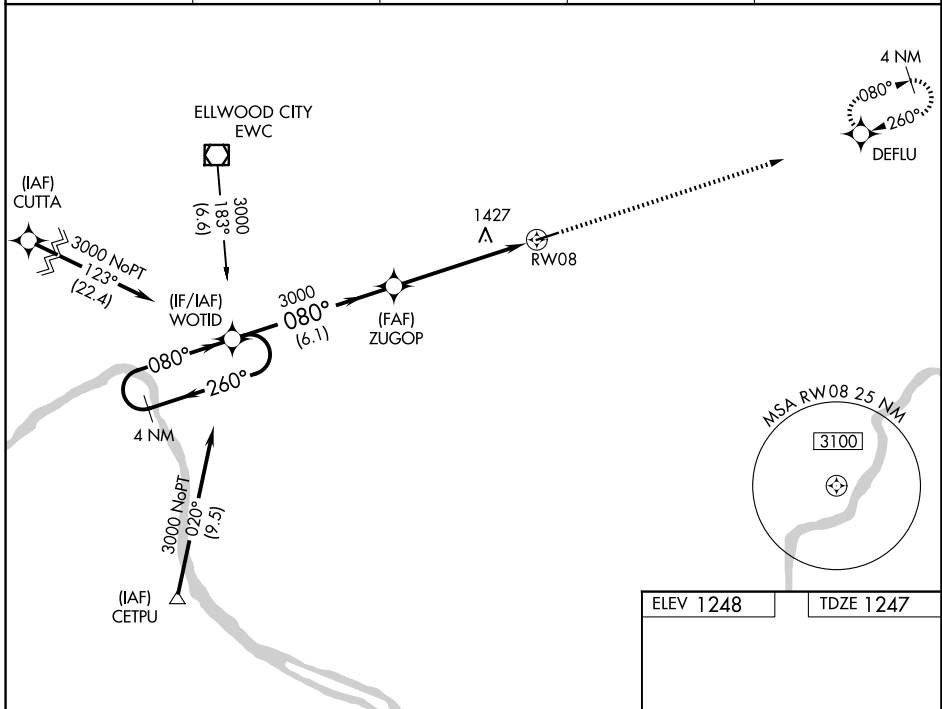
WAAS CH <b>56502</b> <b>W08A</b>	APP CRS <b>080°</b>	Rwy Ldg TDZE Apt Elev	<b>4801</b> <b>1247</b> <b>1248</b>
--	------------------------	-----------------------------	---

# RNAV (GPS) RWY 8

PITTSBURGH/BUTLER RGNL (BTP)

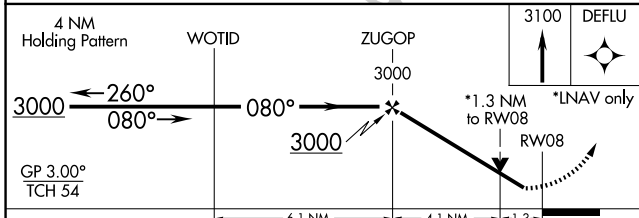
<p><b>⚠</b> For uncompensated Baro-VNAV systems, LNAV/VNAV NA below -17°C (2°F) or above 54°C (130°F). Rwy 8 helicopter visibility reduction below 3/4 SM NA. DME/DME RNP-0.3 NA.</p>	MALSF	<p>MISSED APPROACH: Climb to 3100 direct DEFLU and hold.</p>

AWOS-3PT <b>121.450</b>	PITTSBURGH APP CON <b>124.75 338.2</b>	CLNC DEL <b>119.4</b>	UNICOM <b>123.05</b>	CTAF <b>123.05</b>
----------------------------	---	--------------------------	-------------------------	-----------------------



NE-4, 09 JUL 2026 to 06 AUG 2026

NE-4, 09 JUL 2026 to 06 AUG 2026



CATEGORY	A	B	C	D
LPV DA	1497-3/4 250 (300-3/4)			
LNAV/VNAV DA	1604-1 357 (400-1)			
LNAV MDA	1680-3/4 433 (500-3/4)		1680-1 433 (500-1)	
CIRCLING	1820-1 572 (600-1)		2080-2 1/2 832 (900-2 1/2)	2080-2 3/4 832 (900-2 3/4)

ELEV 1248	TDZE 1247
REIL Rwy 26 HIRL Rwy 8-26	