

WAAS CH <b>40417</b> <b>W22A</b>	APP CRS <b>224°</b>	Rwy Ldg TDZE Apr Elev	<b>6701</b> <b>805</b> <b>808</b>
--	------------------------	-----------------------------	---

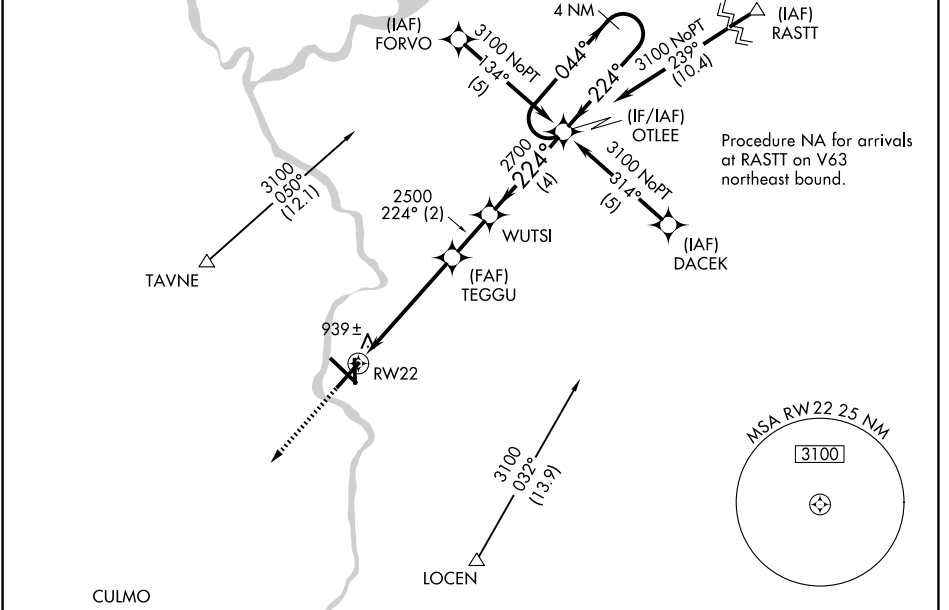
# RNAV (GPS) RWY 22

SOUTHERN WISCONSIN RGNL (JVL)

**⚠** Circling to Rwy 18 NA at night. Baro-VNAV NA when using Rockford altimeter setting. For uncompensated Baro-VNAV systems, LNAV/VNAV NA below -16°C (4°F) or above 47°C (116°F). DME/DME RNP-0.3 NA. Visibility reduction by helicopters NA. When local altimeter setting not received, use Rockford altimeter setting and increase LPV DA to 1189 feet, LNAV/VNAV DA to 1313 feet, and all MDAs 80 feet; increase LPV all Cats visibility ¼ SM, LNAV/VNAV all Cats visibility ½ SM, LNAV Cats C/D visibility ¾ SM and Circling Cats C/D visibility ¼ SM. VDP NA with Rockford altimeter setting.

**MISSED APPROACH:**  
Climb to 3100 direct CULMO and hold.

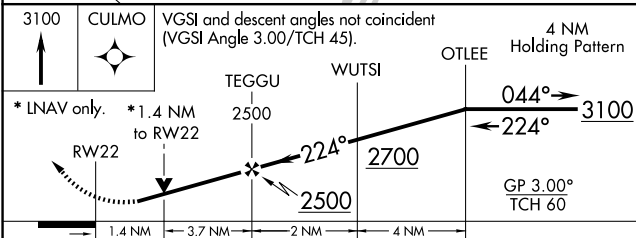
ATIS <b>128.25</b>	ROCKFORD APP CON <b>121.0 327.0</b>	JANESVILLE TOWER ★ <b>118.8 (CTAF) 225.4</b>	GND CON <b>121.65</b>	UNICOM <b>122.95</b>
-----------------------	--	---	--------------------------	-------------------------



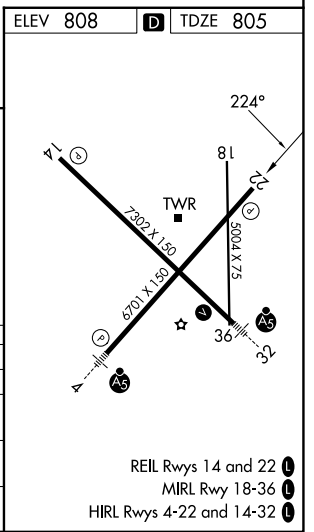
Procedure NA for arrivals at RASTT on V63 northeast bound.

EC-3, 09 JUL 2026 to 06 AUG 2026

EC-3, 09 JUL 2026 to 06 AUG 2026



CATEGORY	A	B	C	D
LPV DA	1120-1		315 (400-1)	
LNAV/VNAV DA	1244-1½		439 (500-1½)	
LNAV MDA	1320-1	515 (600-1)	1320-1½ 515 (600-1½)	1320-3¼ 515 (600-1¾)
CIRCLING	1320-1	512 (600-1)	1420-1¾ 612 (700-1¾)	1460-2 652 (700-2)



REIL Rwy 14 and 22  
MIRL Rwy 18-36  
HIRL Rwy 4-22 and 14-32