

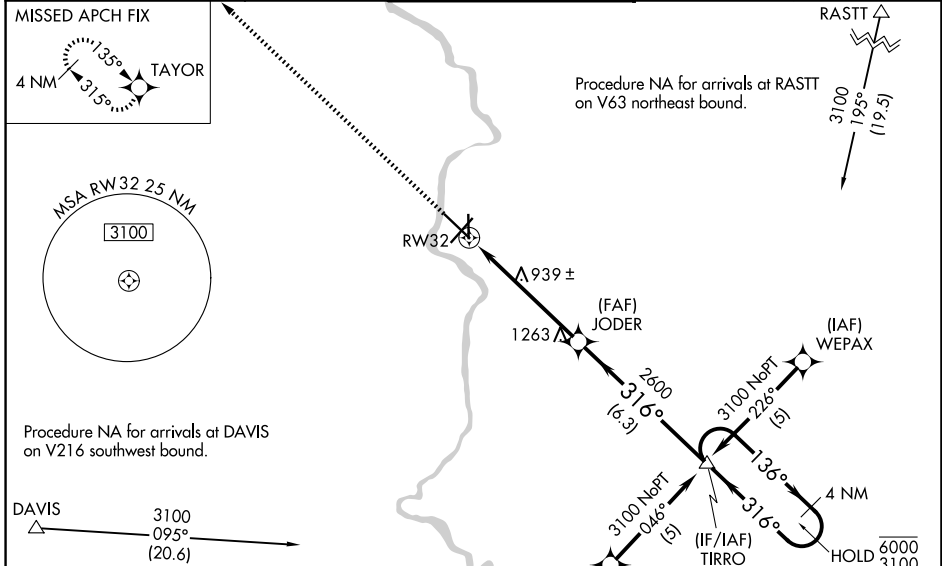
APP CRS	Rwy Ldg	<b>7302</b>
<b>316°</b>	TDZE	<b>806</b>
	Apt Elev	<b>808</b>

# RNAV (GPS) RWY 32

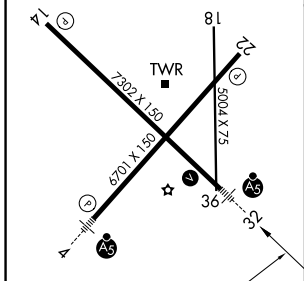
SOUTHERN WISCONSIN RGNL (JVL)

RNP APCH-GPS.		MALSR	
<p><b>NA</b> Circling Rwy 18 NA at night. Baro-VNAV and VDP NA when using Rockford altimeter setting. For uncompensated Baro-VNAV systems, procedure NA below -16° C or above 54°C. When local altimeter setting not received, use Rockford altimeter setting and increase LNAV/VNAV DA to 1289 feet and all MDAs 80 feet; increase LNAV/VNAV all Cats visibility ¼ SM, LNAV Cat C/D visibility ⅓ SM, and Circling Cat C/D visibility ¼ SM. For inop ALS when using Rockford altimeter setting, increase LNAV/VNAV all Cats visibility and LNAV Cat C/D visibility to 1⅓ SM.</p>		<p><b>MISSED APPROACH:</b> Climb to 3100 direct TAYOR and hold.</p>	

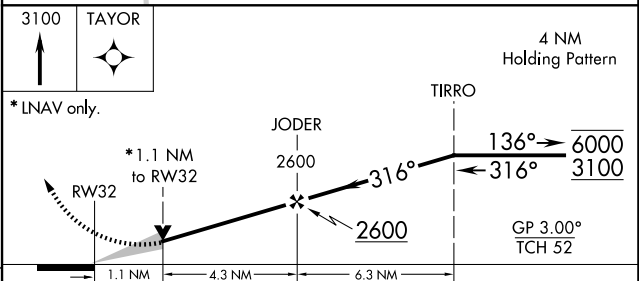
ATIS <b>128.25</b>	ROCKFORD APP CON <b>121.0 327.0</b>	JANESVILLE TOWER ★ <b>118.8 (CTAF) 225.4</b>	GND CON <b>121.65</b>	UNICOM <b>122.95</b>
-----------------------	--	---	--------------------------	-------------------------



ELEV 808	<b>D</b>	TDZE 806
----------	----------	----------



REIL Rwy 14 and 22  
 MIRL Rwy 18-36  
 HIRL Rwy 4-22 and 14-32



CATEGORY	A	B	C	D
LNAV/VNAV DA	1220-¾ 414 (500-¾)			
LNAV MDA	1200-½ 394 (400-½)	1200-⅝ 394 (400-⅝)		
CIRCLING	1260-1 452 (500-1)	1320-1 512 (600-1)	1420-1¾ 612 (700-1¾)	1460-2 652 (700-2)

EC-3, 09 JUL 2026 to 06 AUG 2026

EC-3, 09 JUL 2026 to 06 AUG 2026