

WAAS CH <b>82617</b> <b>W04A</b>	APP CRS <b>043°</b>	Rwy Ldg <b>6701</b> TDZE <b>806</b> Apt Elev <b>808</b>
--	------------------------	---

# RNAV (GPS) RWY 4

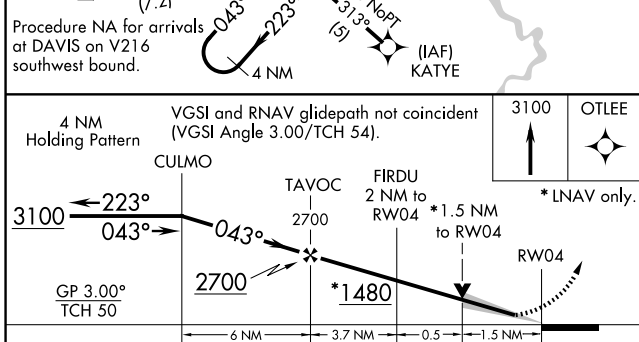
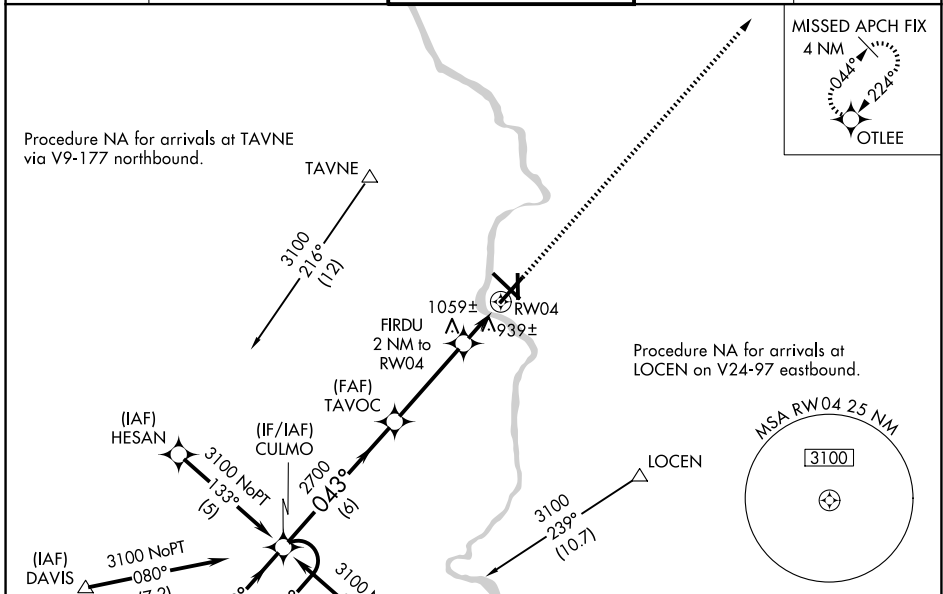
SOUTHERN WISCONSIN RGNL (JVL)

**⚠** Circling to Rwy 18 NA at night. Baro-VNAV NA when using Rockford altimeter setting. For uncompensated Baro-VNAV systems, LNAV/VNAV NA below -1.6°C (4°F) or above 47°C (116°F). DME/DME RNP-0.3 NA. VDP NA with Rockford altimeter setting. When local altimeter setting not received, use Rockford altimeter setting and increase LPV DA to 1075 feet, LNAV/VNAV DA to 1314 feet and all MDAs 80 feet; increase LNAV Cat C and Circling Cats C/D visibility ¼ SM. For inop ALS, when using Rockford altimeter setting increase LPV all Cats visibility to ¾ SM and LNAV/VNAV all Cats visibility to 1 ⅜ SM.

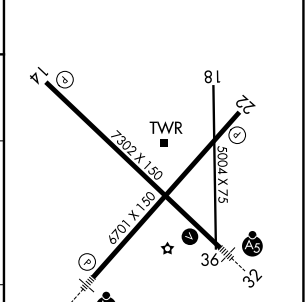
**MALSR**

**MISSED APPROACH:**  
Climb to 3100 direct  
OTLEE and hold.

ATIS <b>128.25</b>	ROCKFORD APP CON <b>121.0 327.0</b>	<b>JANESVILLE TOWER ★</b> <b>118.8 (CTAF) 225.4</b>	GND CON <b>121.65</b>	UNICOM <b>122.95</b>
-----------------------	--	--	--------------------------	-------------------------



ELEV 808	<b>D</b> TDZE 806
----------	-------------------



CATEGORY	A	B	C	D
LPV DA		1006-1/2	200 (200-1/2)	
LNAV/VNAV DA		1245-1	439 (500-1)	
LNAV MDA	1320-1/2 514 (600-1/2)		1320-1 514 (600-1)	1320-1 1/4 514 (600-1 1/4)
CIRCLING	1320-1 512 (600-1)		1420-1 3/4 612 (700-1 3/4)	1460-2 652 (700-2)

REIL Rwy 14 and 22 **Ⓢ**  
MIRL Rwy 18-36 **Ⓢ**  
HIRL Rwy 4-22 and 14-32 **Ⓢ**

EC-3, 09 JUL 2026 to 06 AUG 2026

EC-3, 09 JUL 2026 to 06 AUG 2026