

LOC/DME I-SP 108.3 Chan 20	APP CRS 059°	Rwy Ldg 7006 TDZE 94 Apt Elev 99
--	------------------------	---

ILS RWY 6 (SA CAT I & II)

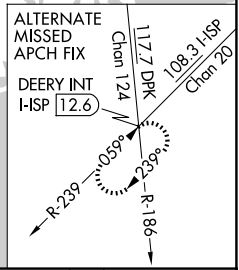
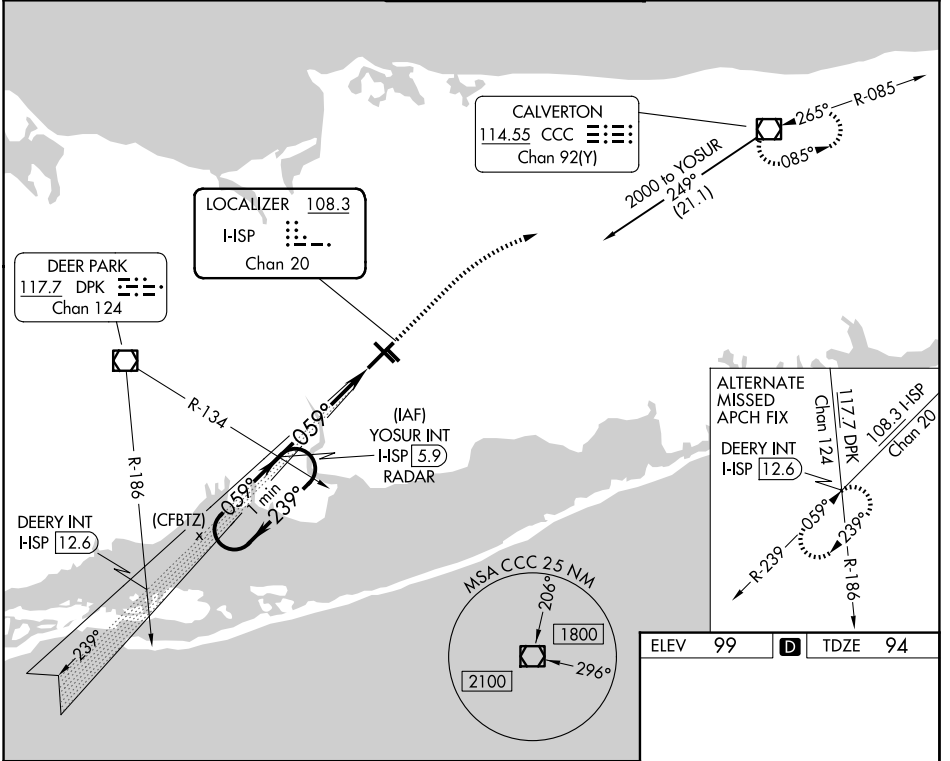
LONG ISLAND MAC ARTHUR (ISP)

▼ Procedure NA when tower closed. SA CAT I: Requires specific OPSPEC, MSPEC, or LOA approval and use of HUD to DH.
▲ SA CAT II: Reduced lighting: Requires specific OPSPEC, MSPEC, or LOA approval and use of autoland or HUD to touchdown.

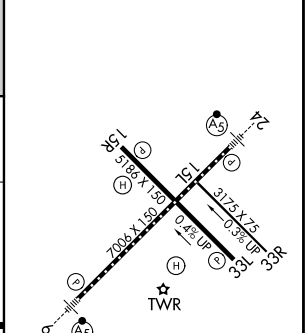
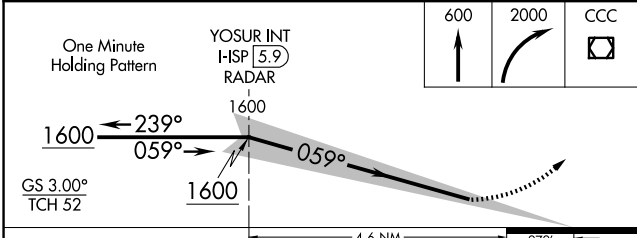
MALSR 

MISSED APPROACH: Climb to 600 then climbing right turn to 2000 direct CCC VOR/DME and hold.

ATIS 120.725	NEW YORK APP CON 120.05 343.75	LONG ISLAND TOWER ★ 119.3 (CTAF) 0 335.5	GND CON 135.3	UNICOM 122.95
------------------------	--	--	-------------------------	-------------------------



ELEV 99	D	TDZE 94
---------	----------	---------



CATEGORY	A	B	C	D
S-ILS 6		SA CAT I RA 162/14	150 DA 244	
S-ILS 6		SA CAT II RA 111/12	100 DA 194	

SA CATEGORY I & II ILS SPECIAL AIRCREW & AIRCRAFT CERTIFICATION REQUIRED

NE-2, 09 JUL 2026 to 06 AUG 2026

NE-2, 09 JUL 2026 to 06 AUG 2026