

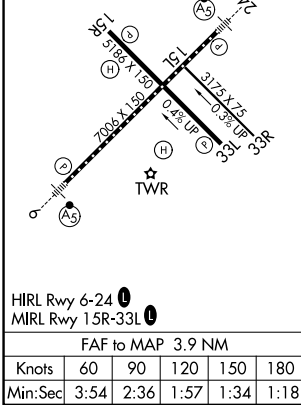
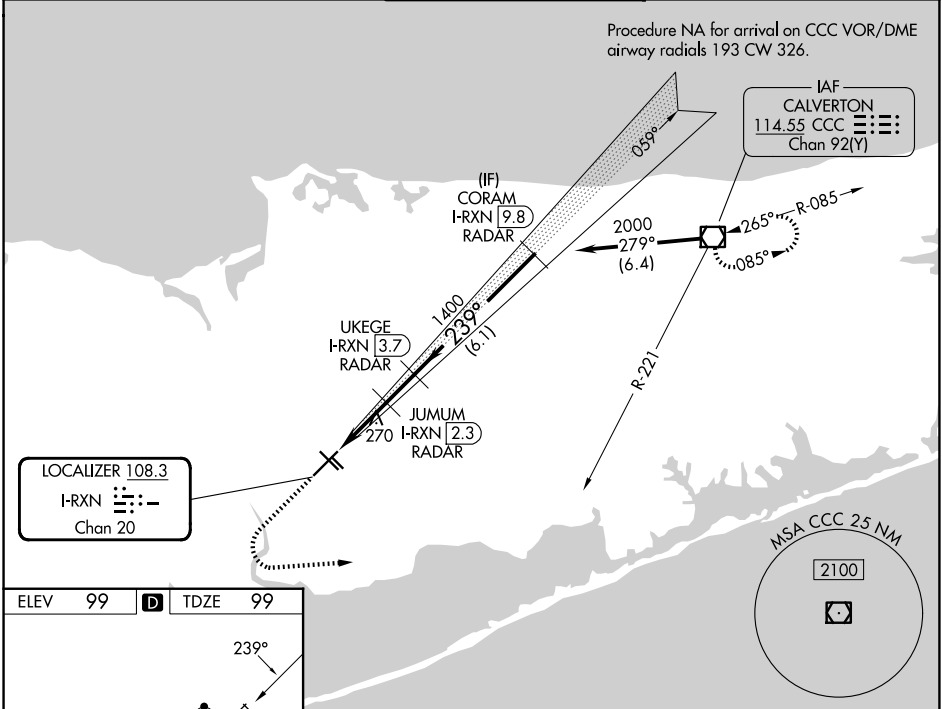
LOC/DME I-RXN <b>108.3</b> Chan <b>20</b>	APP CRS <b>239°</b>	Rwy Ldg TDZE <b>99</b> Apt Elev <b>99</b>	<b>7006</b>
---	------------------------	---	-------------

# ILS or LOC RWY 24

LONG ISLAND MAC ARTHUR (ISP)

RNP APCH - GPS. Aircraft not GPS equipped - RADAR required.	MALSR 	MISSED APPROACH: Climb to 2000, then left turn on heading 100° and CCC R-221 to CCC VOR/DME and hold.
Autopilot coupled approach NA below 800. * RVR 1800 authorized with use of FD or AP or HUD to DA (NA when using HWV altimeter setting).		

ATIS <b>120.725</b>	NEW YORK APP CON <b>120.05 343.75</b>	LONG ISLAND TOWER ★ <b>119.3 (CTAF) 335.5</b>	GND CON <b>135.3</b>	UNICOM <b>122.95</b>
------------------------	--	--	-------------------------	-------------------------



ELEV 99	TDZE 99	2000	hdg 100°	CCC R-221	CCC	CORAM I-RXN 9.8 RADAR	UKEGE I-RXN 3.7 RADAR	JUMUM I-RXN 2.3 RADAR	I-RXN DME ANTENNA	I-RXN 0.2	I-RXN 1	I-RXN 1.3	I-RXN 1.4	1400	2000	GS 3.00°	TCH 52
CATEGORY		A	B	C	D												
S-ILS 24*		299/24				200 (200-½)											
S-LOC 24		520/24	421 (500-½)	520/40	421 (500-¾)												
CIRCLING		600-1	660-1	660-1½	960-2¾												
		501 (600-1)	561 (600-1)	561 (600-½)	861 (900-2¾)												

NE-2, 09 JUL 2026 to 06 AUG 2026

NE-2, 09 JUL 2026 to 06 AUG 2026