

WAAS CH 49120 W33A	APP CRS 329°	Rwy Ldg TDZE 89 Apt Elev 99	5186
--	------------------------	---	-------------

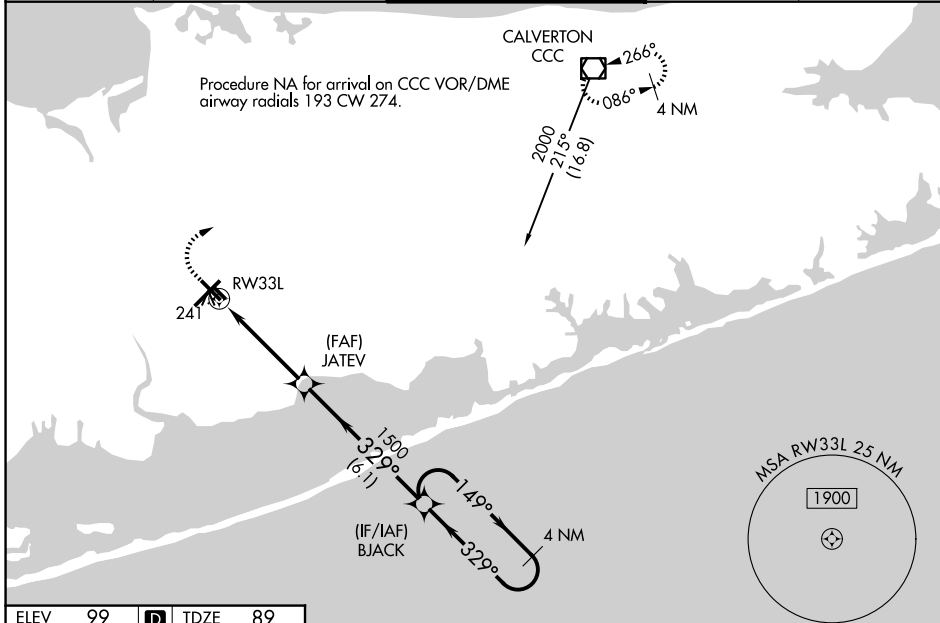
RNAV (GPS) RWY 33L

LONG ISLAND MAC ARTHUR (ISP)

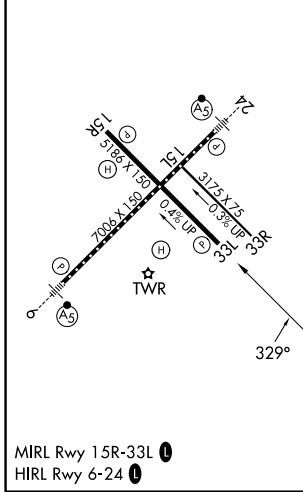
⚠ For uncompensated Baro-VNAV systems, LNAV/VNAV NA below -14°C (7°F) or above 54°C (130°F).
⚠ DME/DME RNP-0.3 NA. When local altimeter setting not received, use Shirley altimeter setting and increase LPV DA to 367 feet, LNAV/VNAV DA to 440 feet and LPV and LNAV/VNAV visibility all Cats 1/8 mile, all MDA 40 feet, increase LNAV Cats C/D visibility 1/8 mile, and Circling Cats C/D visibility 1/4 mile. VDP and Baro-VNAV NA when using Shirley altimeter setting. Helicopter visibility reduction below 3/4 SM NA.

MISSED APPROACH:
 Climb to 600 then climbing right turn to 2000 direct CCC VOR/DME and hold.

ATIS 120.725	NEW YORK APP CON 120.05 343.75	LONG ISLAND TOWER ★ 119.3 (CTAF) 335.5	GND CON 135.3	UNICOM 122.95
------------------------	--	--	-------------------------	-------------------------



ELEV 99	D	TDZE 89
---------	----------	---------



600	2000	CCC	VGSIs and RNAV glidepath not coincident (VGSIs Angle 3.00/TCH 50).			
*LNAV only.		JATEV	BJACK 4 NM Holding Pattern			
*1.1 NM to RW33L		1500	149° → 2000			
		1500	← 329°			
		1.1	3.2 NM	6.1 NM		
CATEGORY	A	B	C	D		
LPV DA		339-7/8	250 (300-7/8)			
LNAV/VNAV DA		412-1/8	323 (400-1/8)			
LNAV MDA	500-1	411 (500-1)	500-1/4	411 (500-1/4)		
CIRCLING	600-1 501 (600-1)	660-1 561 (600-1)	660-1/2 561 (600-1/2)	960-2 3/4 861 (900-2 3/4)		

NE-2, 09 JUL 2026 to 06 AUG 2026

NE-2, 09 JUL 2026 to 06 AUG 2026