

WAAS CH 66010 W06A	APP CRS 059°	Rwy Ldg 7006 TDZE 94 Apt Elev 99
--	------------------------	---

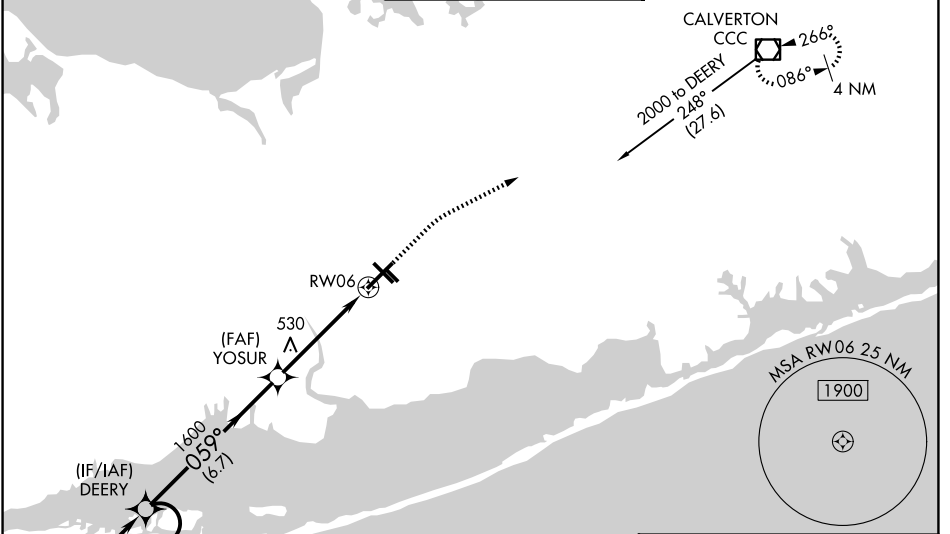
RNAV (GPS) RWY 6

LONG ISLAND MAC ARTHUR (ISP)

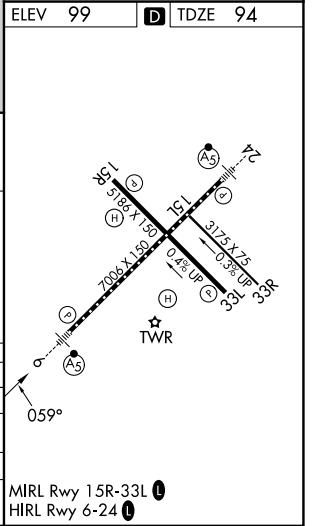
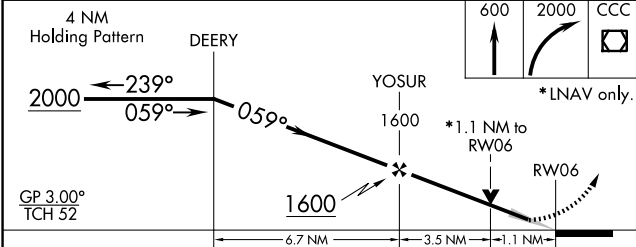
▼ For uncompensated Baro-VNAV systems, LNAV/VNAV NA below -14°C (7°F) or above 54°C (130°F). DME/DME RNP-0.3 NA. VDP and Baro-VNAV NA when using Shirley altimeter setting. When local altimeter setting not received, use Shirley altimeter setting and increase all DA 28 feet and all MDA 40 feet, increase LNAV/VNAV all Cats visibility to RVR 3000 and LNAV Cat C and D visibility to 4500. Increase Circling Cat C and D visibility ¼ mile. For inoperative MALS, increase LNAV/VNAV all Cats visibility to RVR 4500 and LNAV Cat C and D to RVR 6000. For inoperative MALS when using Shirley altimeter setting increase LNAV/VNAV all Cats visibility to RVR 5000. **RVR 1800 authorized with use of FD or AP or HUD to DA, NA when using Shirley altimeter setting.

MALS MISSED APPROACH: Climb to 600 then climbing right turn to 2000 direct CCC VOR/DME and hold.

ATIS 120.725	NEW YORK APP CON 120.05 343.75	LONG ISLAND TOWER ★ 119.3 (CTAF) 335.5	GND CON 135.3	UNICOM 122.95
------------------------	--	--	-------------------------	-------------------------



ELEV 99	D TDZE 94
----------------	-------------------------



CATEGORY	A	B	C	D
LPV DA	**294/24 200 (200-½)			
LNAV/VNAV DA	385/24 291 (300-½)			
LNAV MDA	500/24	406 (500-½)	500/40	406 (500-¾)
CIRCLING	600-1 501 (600-1)	660-1 561 (600-1)	660-1½ 561 (600-½)	960-2¾ 861 (900-2¾)

MIRL Rwy 15R-33L
HIRL Rwy 6-24

NE-2, 09 JUL 2026 to 06 AUG 2026

NE-2, 09 JUL 2026 to 06 AUG 2026