

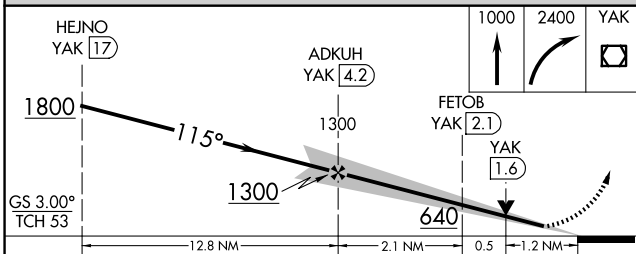
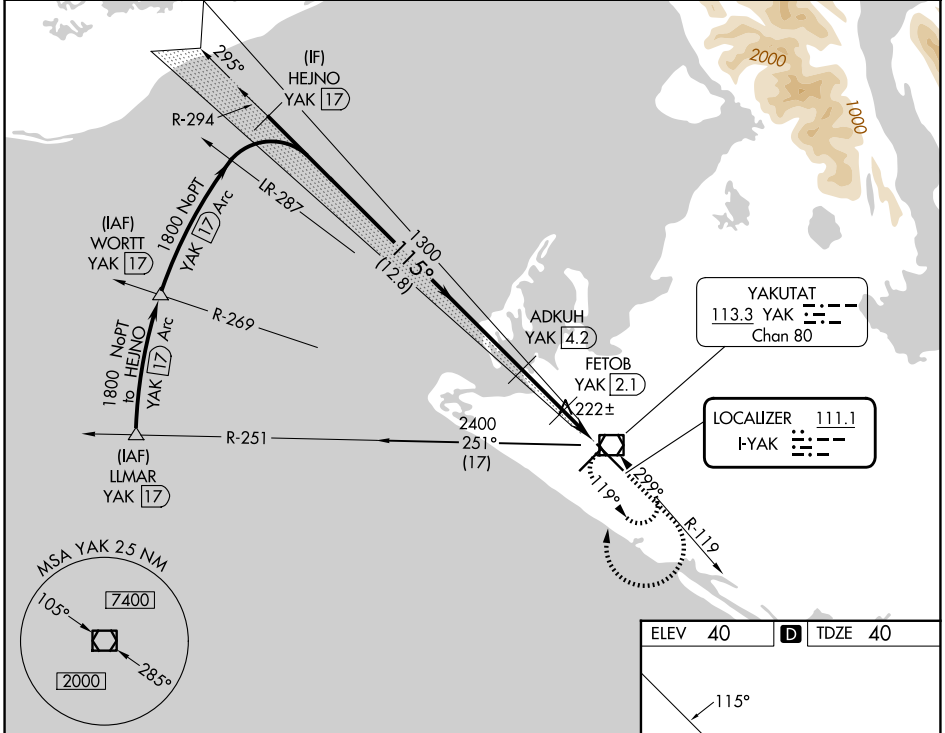
LOC I-YAK 111.1	APP CRS 115°	Rwy Ldg 7732
		TDZE 40
		Apt Elev 40

ILS or LOC RWY 11

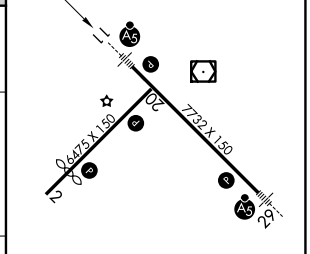
YAKUTAT (YAK) (PAYA)

DME required.	MALSR	MISSED APPROACH: Climb to 1000 then climbing right turn to 2400 direct YAK VOR/DME and hold, continue climb-in-hold to 2400.
<p>▼ Circling Rwy 20 NA at night. When Yakutat altimeter setting not received, procedure NA. DME from YAK VOR/DME. DME use requires simultaneous reception of I-YAK and YAK DME.</p> <p>▲</p>		

ASOS 135.75	ANCHORAGE CENTER 119.0 263.1	JUNEAU RADIO 123.6 (CTAF) 0
-----------------------	--	---------------------------------------



ELEV 40	D TDZE 40
---------	------------------



CATEGORY	A	B	C	D
S-ILS 11	240/24 200 (200-½)			
S-LOC 11	480/24	440 (500-½)	480/40	440 (500-¾)
CIRCLING	520-1 480 (500-1)	540-1 500 (500-1)	820-2¼ 780 (800-2¼)	820-2½ 780 (800-2½)

REIL Rws 2 and 20	0
HIRL Rws 2-20 and 11-29	0
FAF to MAP 3.6 NM	
Knots	60 90 120 150 180
Min:Sec	3:36 2:24 1:48 1:26 1:12