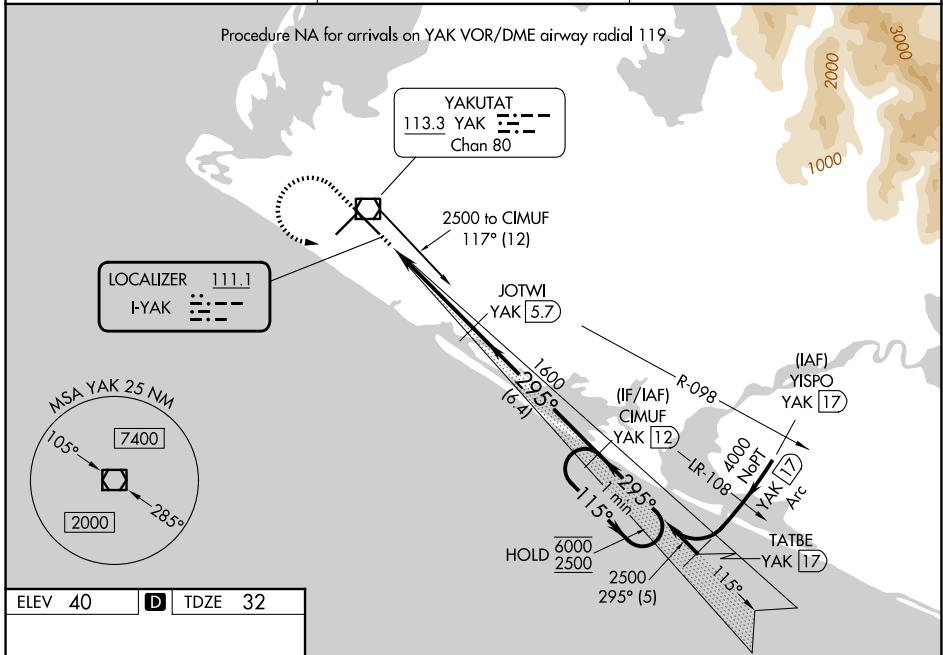


LOC I-YAK 111.1	APP CRS 295°	Rwy Ldg 7732 TDZE 32 Apt Elev 40
---------------------------	------------------------	---

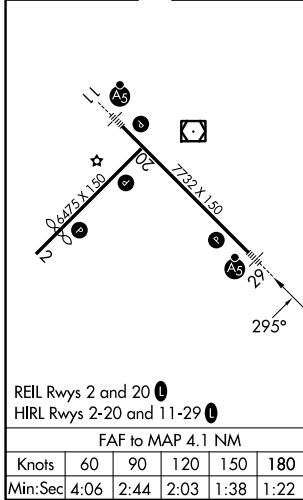
LOC BC RWY 29 YAKUTAT (YAK) (PAYA)

DME required.	MALS R	MISSED APPROACH: Climb to 2000 then climbing left turn to 2500 on YAK VOR/DME R-117 to CIMUF/ YAK 12 DME and hold.
<p>▼ Circling Rwy 20 NA at night. Rwy 29 helicopter visibility reduction below 3/4 SM NA. Inop table does not apply to S-LOC 29 Cats A and B. When Yakutat altimeter setting not received, procedure NA. For inop ALS, increase S-LOC 29 Cats C and D visibility to 1 3/8 SM. DME from YAK VOR/DME. DME use requires simultaneous reception of I-YAK and YAK DME.</p>		

ASOS 135.75	ANCHORAGE CENTER 119.0 263.1	JUNEAU RADIO 123.6 (CTAF) 0
-----------------------	--	---------------------------------------



ELEV 40	D	TDZE 32
---------	----------	---------



BACK COURSE

	2000	2500	CIMUF YAK 12	CIMUF YAK 12	One Minute Holding Pattern
	↑	YAK R-117	JOTWI YAK 5.7	115° → 6000	← 295° 2500
		YAK 2.3	1600		
		0.7	0.7	3.3 NM	6.4 NM
REIL Rws 2 and 20	HIRL Rws 2-20 and 11-29				
FAF to MAP 4.1 NM					
Knots	60	90	120	150	180
Min:Sec	4:06	2:44	2:03	1:38	1:22
CATEGORY	A	B	C	D	
S-LOC 29	540-1 508 (500-1)				
CIRCLING	540-1 500 (500-1)		820-2 1/4 780 (800-2 1/4)		820-2 1/2 780 (800-2 1/2)

AK, 09 JUL 2026 to 03 SEP 2026

AK, 09 JUL 2026 to 03 SEP 2026