

WAAS CH <b>78414</b> <b>W02A</b>	APP CRS <b>025°</b>	Rwy Ldg TDZE Apt Elev	<b>5087</b> <b>32</b> <b>40</b>
--	------------------------	-----------------------------	---------------------------------------

# RNAV (GPS) RWY 2

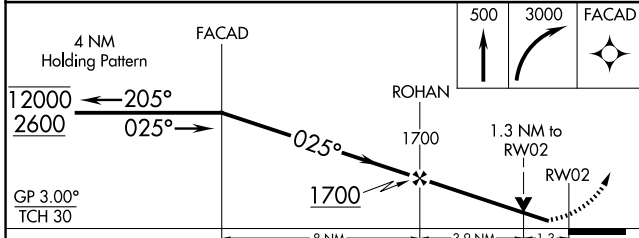
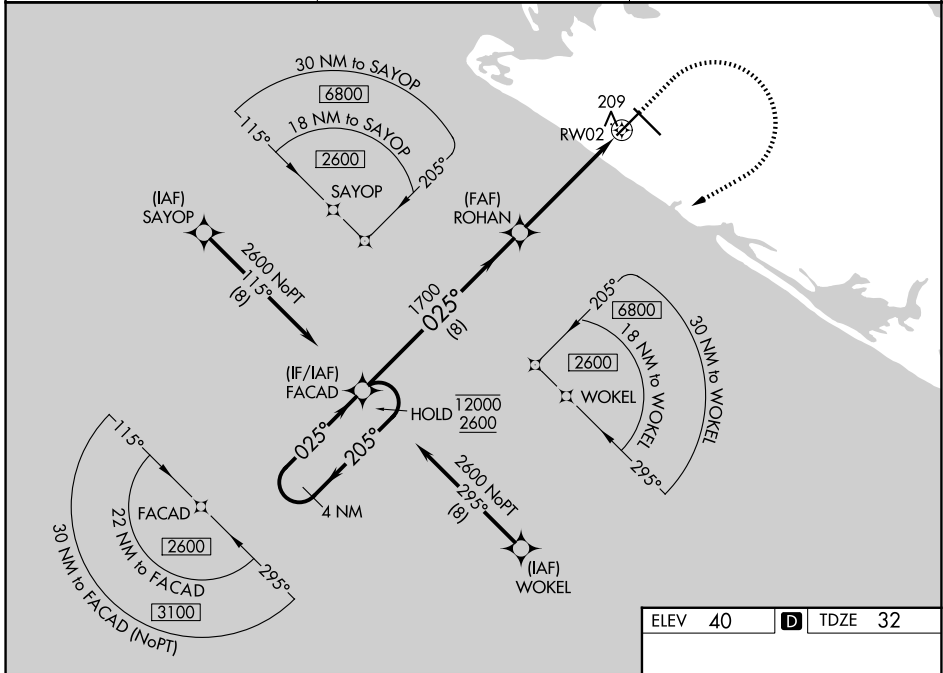
YAKUTAT (YAK) (PAYA)

RNP APCH - GPS.

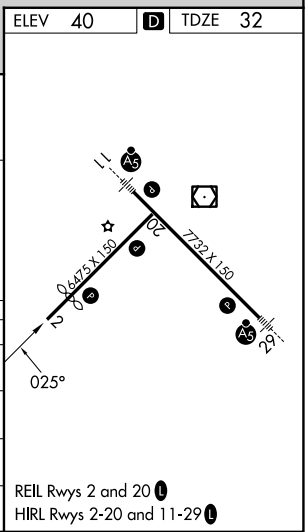
**⚠** Circling Rwy 20 NA at night. Rwy 2 helicopter visibility reduction below 3/4 SM NA. When Yakutat altimeter setting not received, procedure NA. For uncompensated Baro-VNAV systems, LNAV/VNAV NA below -16° C or above 54° C.

MISSED APPROACH: Climb to 500 then climbing right turn to 3000 direct FACAD and hold.

ASOS <b>135.75</b>	ANCHORAGE CENTER <b>119.0 263.1</b>	JUNEAU RADIO <b>123.6 (CTAF) 0</b>
-----------------------	--	---------------------------------------



CATEGORY	A	B	C	D
LPV DA	297-1		265 (300-1)	
LNAV/VNAV DA	479-1 3/8		447 (500-1 3/8)	
LNAV MDA	460-1 428 (500-1)		460-1 1/4 428 (500-1 1/4)	
CIRCLING	520-1 480 (500-1)	540-1 500 (500-1)	820-2 1/4 780 (800-2 1/4)	820-2 1/2 780 (800-2 1/2)



AK, 09 JUL 2026 to 03 SEP 2026

AK, 09 JUL 2026 to 03 SEP 2026