

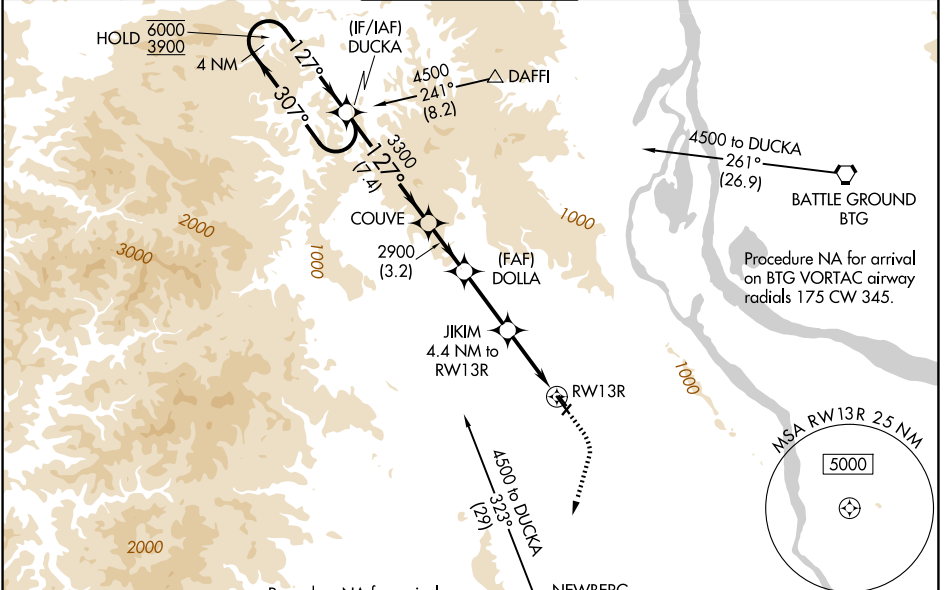
WAAS CH 69502 W13A	APP CRS 127°	Rwy Ldg 6600
		TDZE 203
		Apt Elev 208

RNAV (GPS) RWY 13R

PORTLAND-HILLSBORO (HIO)

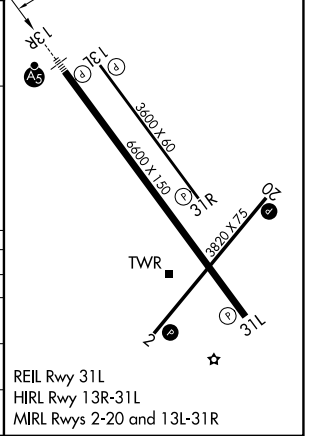
RNP APCH - GPS.		MALS R	MISSED APPROACH: Climb to 1000 then climbing right turn to 3000 direct UBG VOR/DME and hold. Continue climb-in-hold to 3000.
<p>▼ For uncompensated Baro-VNAV systems, LNAV/VNAV NA below -15°C or above 54°C. Circling Rwy 13L, 31R NA at night. For inop ALS, increase LNAV Cat C/D visibility to 1½ SM. * RVR 1800 authorized with use of FD or AP or HUD to DA.</p>			

ATIS 127.65	PORTLAND APP CON 126.0 269.175	HILLSBORO TOWER ★ 119.3 (CTAF) 239.3	GND CON 121.7	UNICOM 122.95
-----------------------	--	--	-------------------------	-------------------------



ELEV	208	TDZE	203
------	-----	------	-----

4 NM Holding Pattern		DUCKA	COUVE	DOLLA	JIKIM	UBG
6000	←307°				4.4 NM to RWY13R	
3900	→127°				1.3 NM to RWY13R	
GP 3.00°						
TCH 48						
		7.4 NM	3.2 NM	3.9 NM	3.1 NM	1.3 NM
CATEGORY	A	B	C	D		
LPV DA *		403/24	200 (200-½)			
LNAV/VNAV DA		661/45	458 (500-7%)			
LNAV MDA	680/24	477 (500-½)	680/50	477 (500-1)		
CIRCLING	680-1 472 (500-1)	720-1 512 (600-1)	940-2 732 (800-2)	980-2½ 772 (800-2½)		



NW-1, 09 JUL 2026 to 06 AUG 2026

NW-1, 09 JUL 2026 to 06 AUG 2026