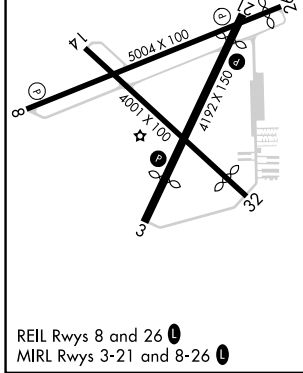
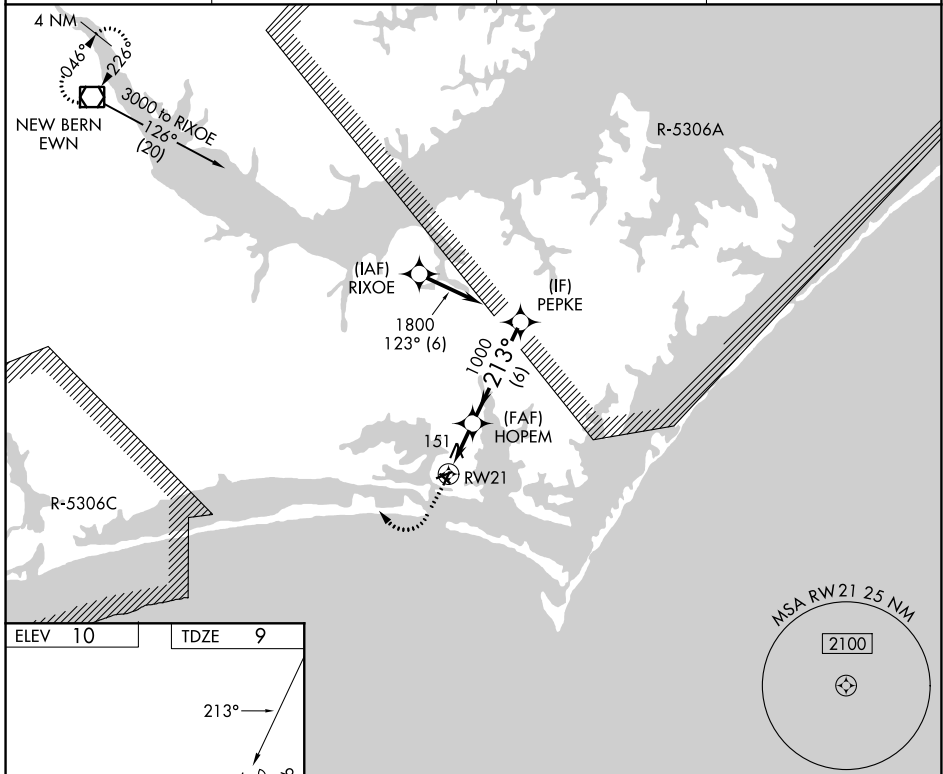


APP CRS <b>213°</b>	Rwy Ldg TDZE Apt Elev	<b>3676</b> <b>9</b> <b>10</b>
------------------------	-----------------------------	--------------------------------------

# RNAV (GPS) RWY 21

MICHAEL J SMITH FLD (MR.H)

RNP APCH - GPS.			MISSED APPROACH: Climb to 500 then climbing right turn to 3000 direct EWN VOR/DME and hold.
ASOS <b>135,375</b>	CHERRY POINT APP CON <b>132,575 299.6</b>	CLNC DEL <b>125,65</b>	UNICOM <b>122.8 (CTAF) 0</b>



ELEV 10	TDZE 9	500		3000	EWN	VGSI and descent angles not coincident (VGSI Angle 4.00/TCH 54).
CATEGORY	A	B	C	D		
LNAV MDA	420-1	411 (500-1)	NA			
CIRCLING	540-1	530 (600-1)	NA			

SE-2, 09 JUL 2026 to 06 AUG 2026

SE-2, 09 JUL 2026 to 06 AUG 2026