

WAAS CH 97727 W08A	APP CRS 076°	Rwy Ldg 5004 TDZE 8 Apt Elev 10
--	------------------------	--

RNAV (GPS) RWY 8

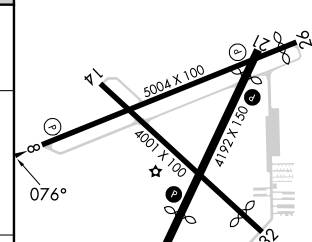
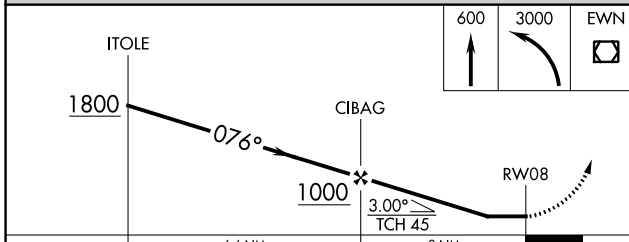
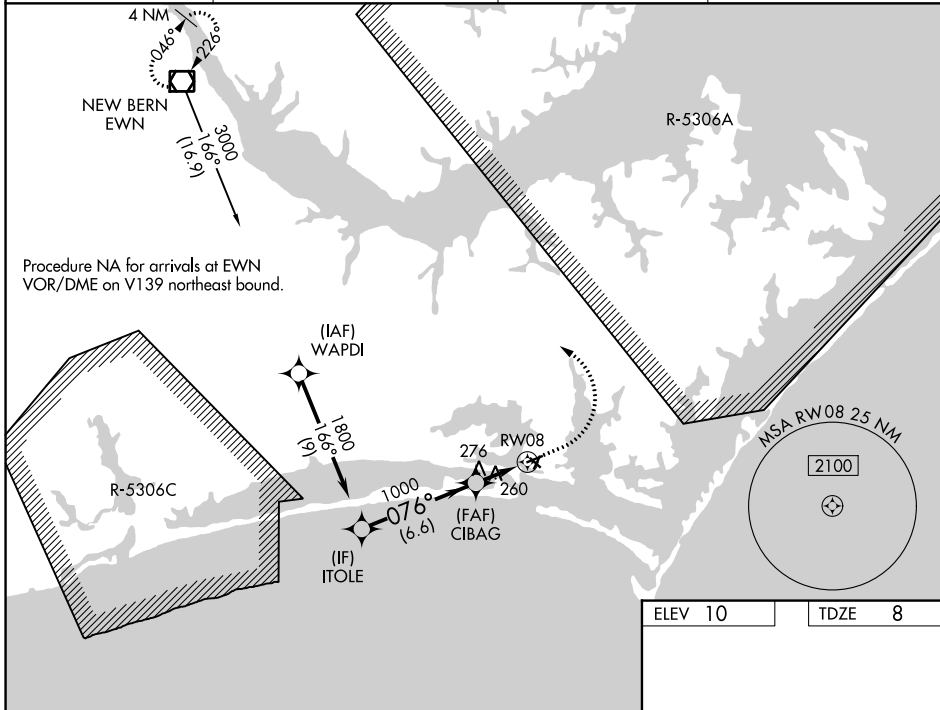
MICHAEL J SMITH FLD (MR.H)

RNP APCH.

⚠ ATC clearance required to penetrate R-5306A and R-5306C.
Rwy 8, helicopter visibility reduction below 1 SM NA.
Straight-in Rwy 8 NA at night, Circling Rwy 8, 14, 32 NA at night.

MISSED APPROACH: Climb to 600 then climbing left turn to 3000 direct EWN VOR/DME and hold.

ASOS 135.375	CHERRY POINT APP CON 132.575 299.6	CLNC DEL 125.65	UNICOM 122.8 (CTAF) 0
------------------------	--	---------------------------	---------------------------------



CATEGORY	A	B	C	D
LP MDA	520-1	512 (600-1)	520-1 $\frac{3}{8}$	512 (600-1 $\frac{3}{8}$)
LNAV MDA	540-1	532 (600-1)	540-1 $\frac{1}{2}$	532 (600-1 $\frac{1}{2}$)
CIRCLING	540-1	530 (600-1)	580-1 $\frac{1}{2}$ 570 (600-1 $\frac{1}{2}$)	620-2 610 (700-2)

ELEV 10	TDZE 8
---------	--------

REIL Rwy 8 and 26 **1**
MIRL Rwy 3-21 and 8-26 **1**

SE-2, 09 JUL 2026 to 06 AUG 2026

SE-2, 09 JUL 2026 to 06 AUG 2026