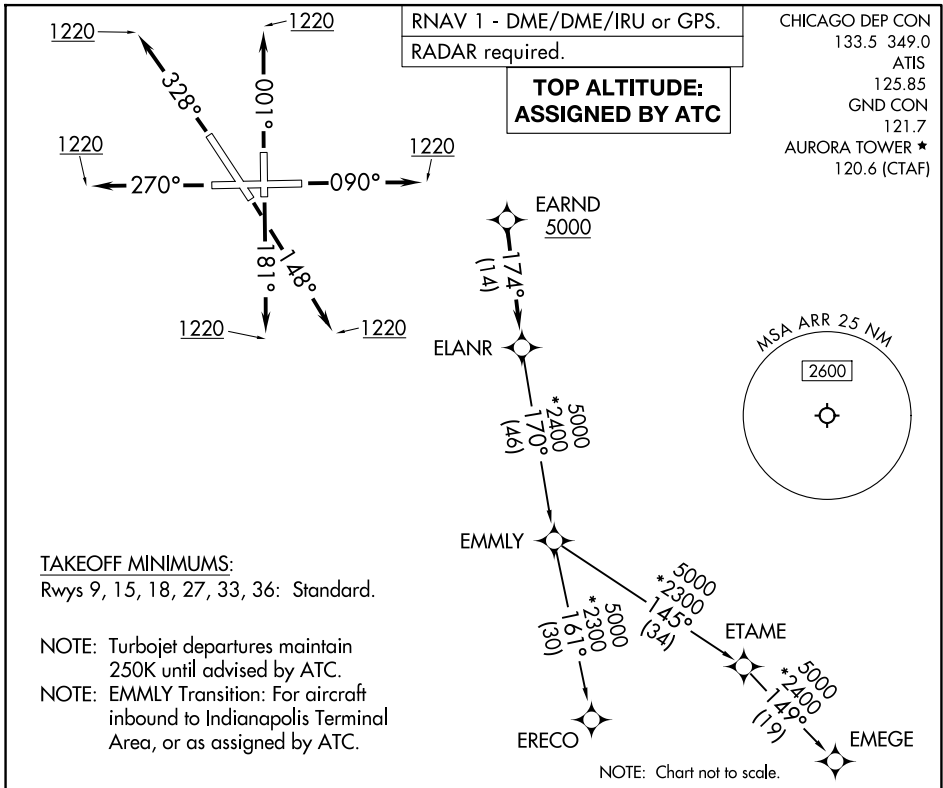


(ELANR9.ELANR) 26078

AL-5103 (FAA)

AURORA MUNI (ARR)
CHICAGO/AURORA, ILLINOIS

ELANR NINE DEPARTURE (RNAV)



EC-3, 09 JUL 2026 to 06 AUG 2026

EC-3, 09 JUL 2026 to 06 AUG 2026



DEPARTURE ROUTE DESCRIPTION

- TAKEOFF RUNWAY 9: Climb on heading 090° to 1220, for vectors to EARND, thence. . . .
- TAKEOFF RUNWAY 15: Climb on heading 148° to 1220, for vectors to EARND, thence. . . .
- TAKEOFF RUNWAY 18: Climb on heading 181° to 1220, for vectors to EARND, thence. . . .
- TAKEOFF RUNWAY 27: Climb on heading 270° to 1220, for vectors to EARND, thence. . . .
- TAKEOFF RUNWAY 33: Climb on heading 328° to 1220, for vectors to EARND, thence. . . .
- TAKEOFF RUNWAY 36: Climb on heading 001° to 1220, for vectors to EARND, thence. . . .

. . . . on track 174° to ELANR, then on transition, maintain ATC assigned altitude. Expect filed altitude 10 minutes after departure.

- EMEGE TRANSITION (ELANR9.EMEGE):
- EMMLY TRANSITION (ELANR9.EMMLY):
- ERECO TRANSITION (ELANR9.ERECO):

ELANR NINE DEPARTURE (RNAV)

CHICAGO/AURORA, ILLINOIS
AURORA MUNI (ARR)

(ELANR9.ELANR) 19MAR26