

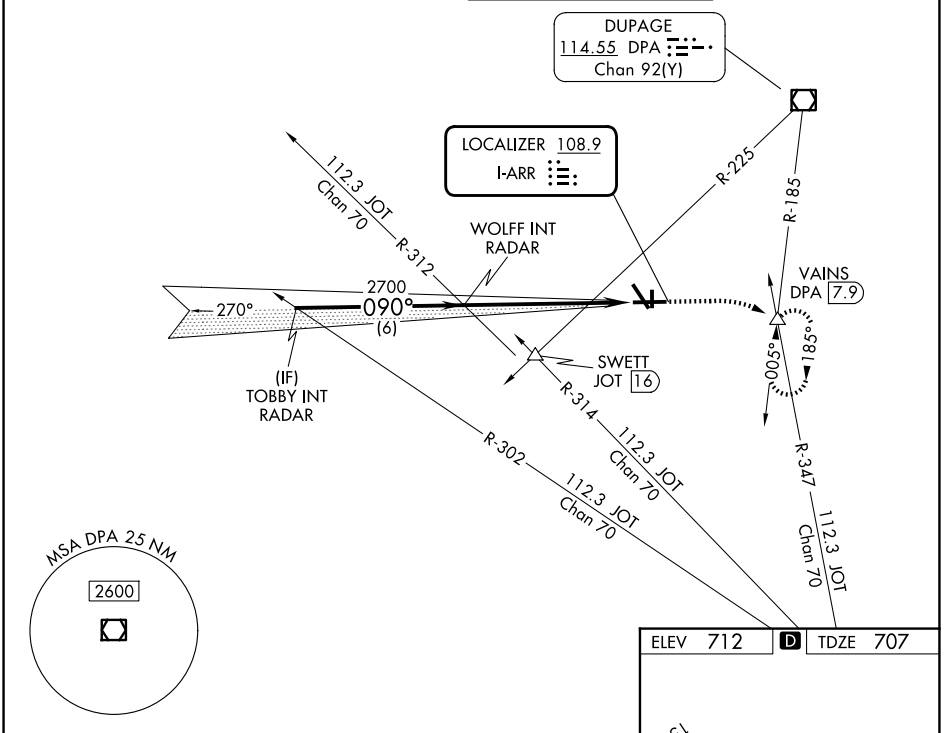
LOC I-ARR <b>108.9</b>	APP CRS <b>090°</b>	Rwy Ldg TDZE Apt Elev	<b>6501</b> <b>707</b> <b>712</b>
---------------------------	------------------------	-----------------------------	---

# ILS or LOC RWY 9

AURORA MUNI (A.R.R.)

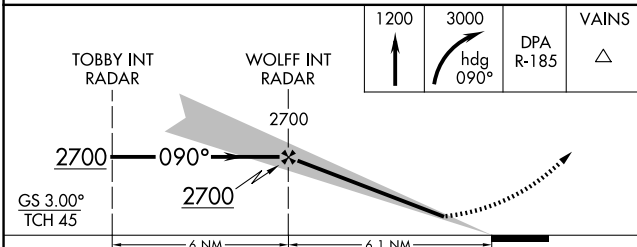
RADAR required for procedure entry.		MALSRL	MISSED APPROACH: Climb to 1200 then climbing right turn to 3000 on heading 090° and on DPA VOR/DME R-185 to VAINS INT/DPA 7.9 DME and hold, continue climb-in-hold to 3000.
▼ For inop ALS, increase S-LOC 9 Cat C/D visibilities to 1½ SM.			

ATIS <b>125.85</b>	CHICAGO APP CON <b>133.5 349.0</b>	AURORA TOWER ★ <b>120.6 (CTAF)</b>	GND CON <b>121.7</b>
-----------------------	---------------------------------------	---------------------------------------	-------------------------



EC-3, 09 JUL 2026 to 06 AUG 2026

EC-3, 09 JUL 2026 to 06 AUG 2026



ELEV 712	<b>D</b>	TDZE 707
MIRL Rwy 18-36 <b>(L)</b>		
HIRL Rwy 15-33 and 9-27 <b>(L)</b>		
REIL Rwy 15, 18, 27, and 36 <b>(L)</b>		
FAF to MAP 6.1 NM		
Knots	60	90 120 150 180
Min:Sec	6:06	4:04 3:03 2:26 2:02