
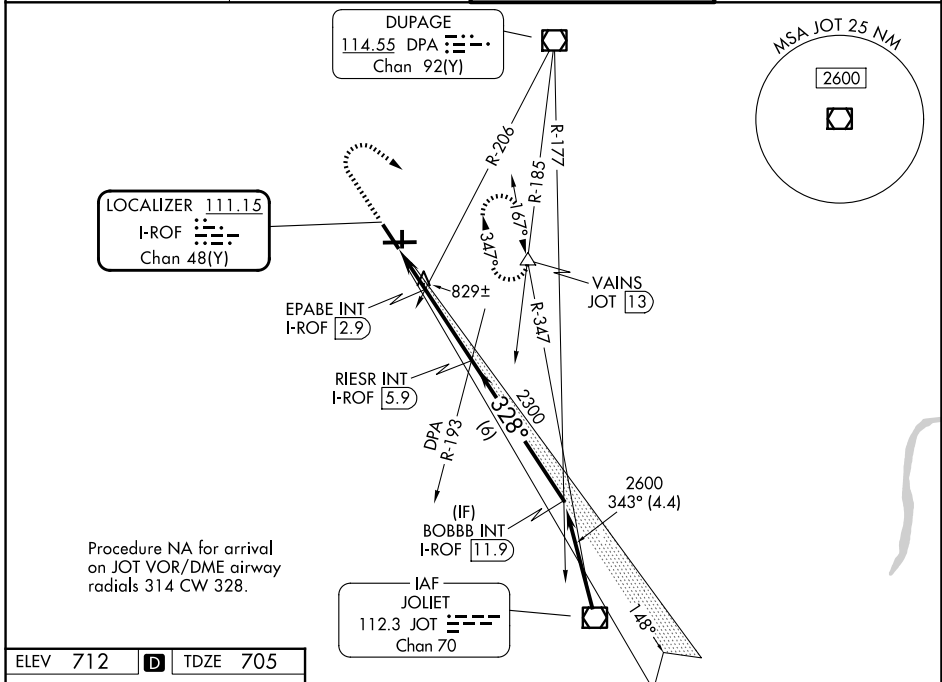


LOC/DME I-ROF <b>111.15</b> Chan 48(Y)	APP CRS <b>328°</b>	Rwy Ldg TDZE Apt Elev	<b>5503</b> <b>705</b> <b>712</b>
--	------------------------	-----------------------------	---

# LOC RWY 33

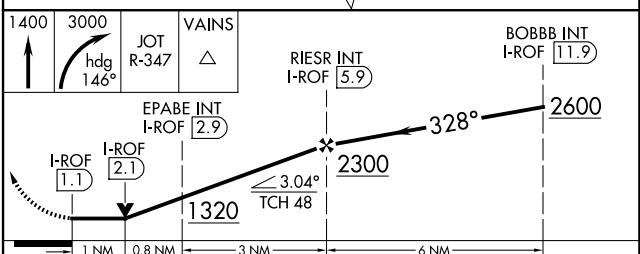
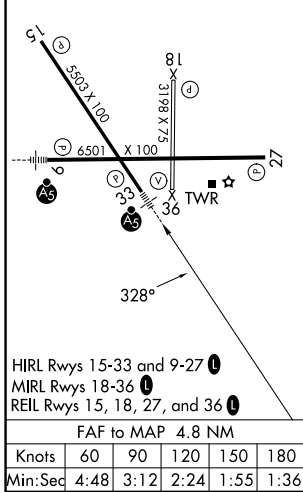
AURORA MUNI (A.R.R.)

<p><b>▽</b> For inop ALS, increase S-LOC 33 Cats C and D visibility to 1¼ SM and EPABE FIX minimums S-LOC 33 Cats C and D visibility to 1 SM.</p>	<p><b>MALSR</b>  </p> <p>MISSED APPROACH: Climb to 1400 then climbing right turn to 3000 on heading 146° and JOT VOR/DME R-347 to VAINS INT/JOT 13 DME and hold, continue climb-in-hold to 3000.</p>		
<p>ATIS <b>125.85</b></p>	<p>CHICAGO APP CON <b>133.5 349.0</b></p>	<p>AURORA TOWER* <b>120.6 (CTAF) 0</b></p>	<p>GND CON <b>121.7</b></p>



Procedure NA for arrival on JOT VOR/DME airway radials 314 CW 328.

ELEV 712	<b>D</b>	TDZE 705
----------	----------	----------



CATEGORY	A		B		C		D	
	S-LOC 33	1320-½	615 (700-½)	1320-1¾	615 (700-1¾)	1320-1¾	615 (700-1¾)	1320-2
CIRCLING	1320-1	608 (700-1)	1320-1¾	608 (700-1¾)	1320-2	608 (700-2)	1320-2	608 (700-2)
EPABE FIX MINIMUMS (DUAL VOR RECEIVERS or DME REQUIRED)								
S-LOC 33	1080-½	375 (400-½)	1080-5/8	375 (400-5/8)	1080-5/8	375 (400-5/8)	1080-5/8	375 (400-5/8)
CIRCLING	1200-1	488 (500-1)	1300-1½	588 (600-1½)	1300-1½	588 (600-1½)	1320-2	608 (700-2)

EC-3, 09 JUL 2026 to 06 AUG 2026

EC-3, 09 JUL 2026 to 06 AUG 2026