

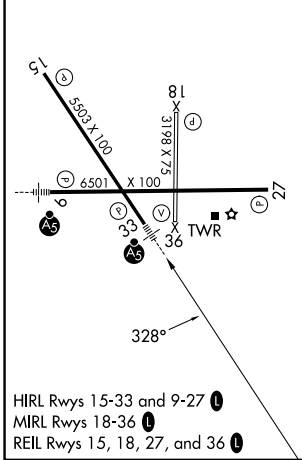
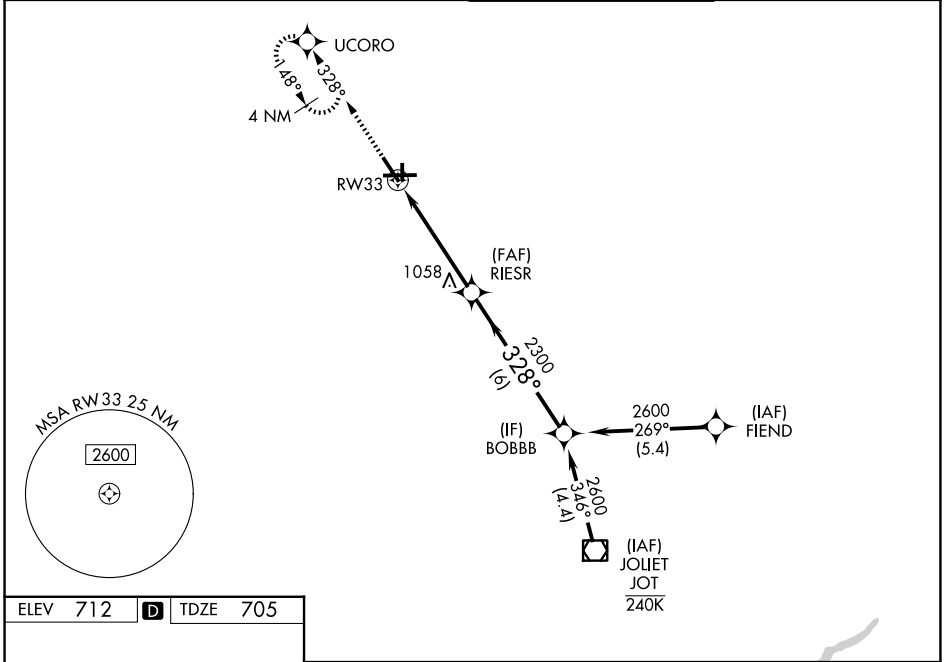
WAAS CH 49105 W33A	APP CRS 328°	Rwy Ldg TDZE Apt Elev	5503 705 712
--	------------------------	-----------------------------	---

RNAV (GPS) RWY 33

AURORA MUNI (A.R.R.)

RNP APCH - GPS.		MALSRL	MISSED APPROACH: Climb to 3000 direct UCORO and hold, continue climb-in-hold to 3000.
<p>▼ For uncompensated Baro-VNAV systems, LNAV/VNAV NA below -23°C or above 54°C. ▲ Circling Rwy 18 NA at night. For inop ALS, increase LPV all Cats visibility to 1 SM.</p>			

ATIS 125.85	CHICAGO APP CON 133.5 349.0	AURORA TOWER ★ 120.6 (CTAF) 0	GND CON 121.7
-----------------------	---------------------------------------	---	-------------------------



3000	UCORO				
GP 3.04°	TCH 48				
CATEGORY	A	B	C	D	
LPV DA	1042-1/2		337 (400-1/2)		
LNAV/VNAV DA	1140-3/4		435 (500-3/4)		
LNAV MDA	1140-1/2	435 (500-1/2)	1140-3/4	435 (500-3/4)	
CIRCLING	1200-1	488 (500-1)	1300-1 1/2	1340-2	588 (600-1 1/2) 628 (700-2)

EC-3, 09 JUL 2026 to 06 AUG 2026

EC-3, 09 JUL 2026 to 06 AUG 2026