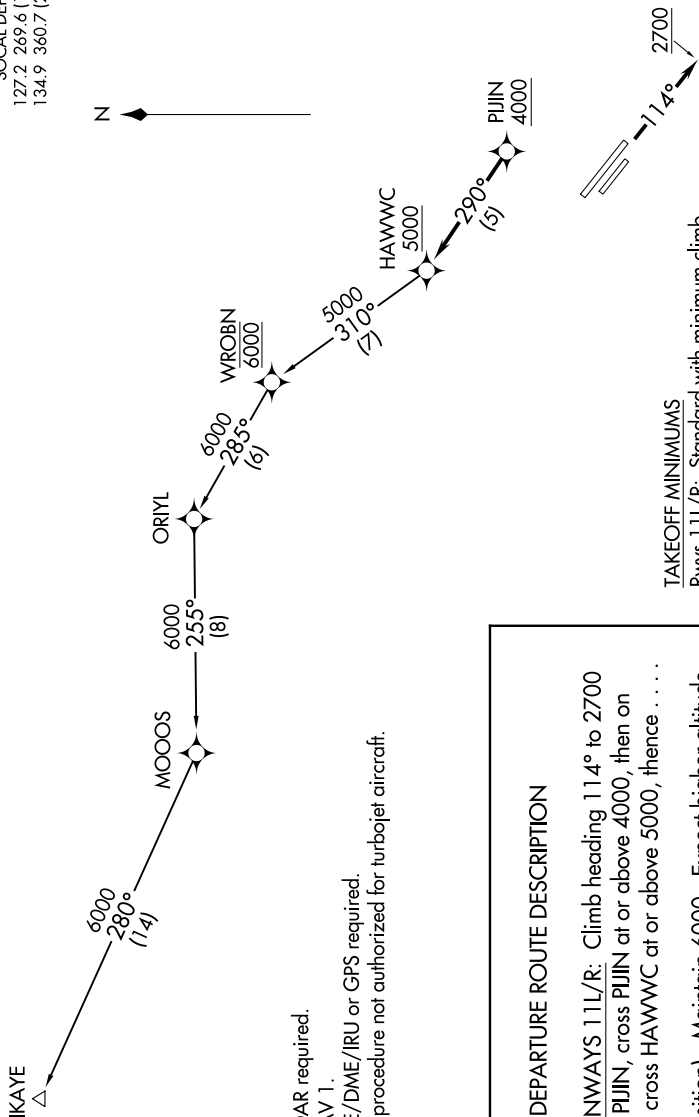
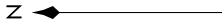


SW-3, 09 JUL 2026 to 06 AUG 2026 13:57MS

**TOP ALTITUDE:**  
6000

GND CON  
120.9  
TORRANCE TOWER ★  
133.075 257.8 (NORTH)  
124.0 257.8 (SOUTH)  
SOCAL DEP CON  
127.2 269.6 (11L/R)  
134.9 360.7 (29L/R)



NOTE: RADAR required.  
NOTE: RNAV 1.  
NOTE: DME/DME/IRU or GPS required.  
NOTE: This procedure not authorized for turbojet aircraft.

**DEPARTURE ROUTE DESCRIPTION**

**TAKEOFF RUNWAYS 11L/R:** Climb heading 114° to 2700 for vectors to PIJIN, cross PIJIN at or above 4000, then on track 290° to cross HAWWC at or above 5000, thence . . . . on (transition). Maintain 6000. Expect higher altitude 10 minutes after departure.

**IKAYE TRANSITION (HAWWC3.IKAYE)**

**TAKEOFF MINIMUMS**  
Rwys 11L/R: Standard with minimum climb of 325 feet per NM to 1600.  
Rwys 29L/R: NA-ATC.

NOTE: Chart not to scale.

SW-3, 09 JUL 2026 to 06 AUG 2026