

WAAS CH 56425 W29A	APP CRS 294°	Rwy Ldg TDZE Apt Elev	4461 97 103
--	------------------------	-----------------------------	--

RNAV (GPS) RWY 29R

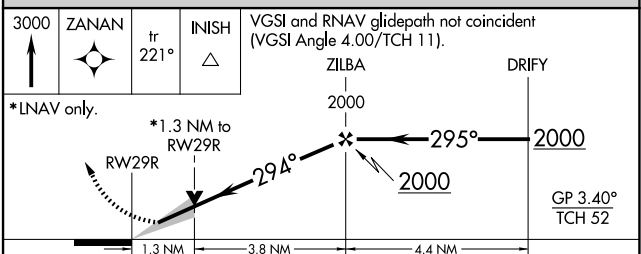
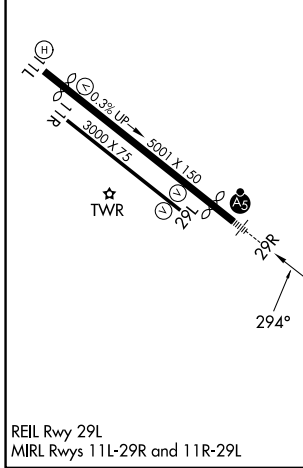
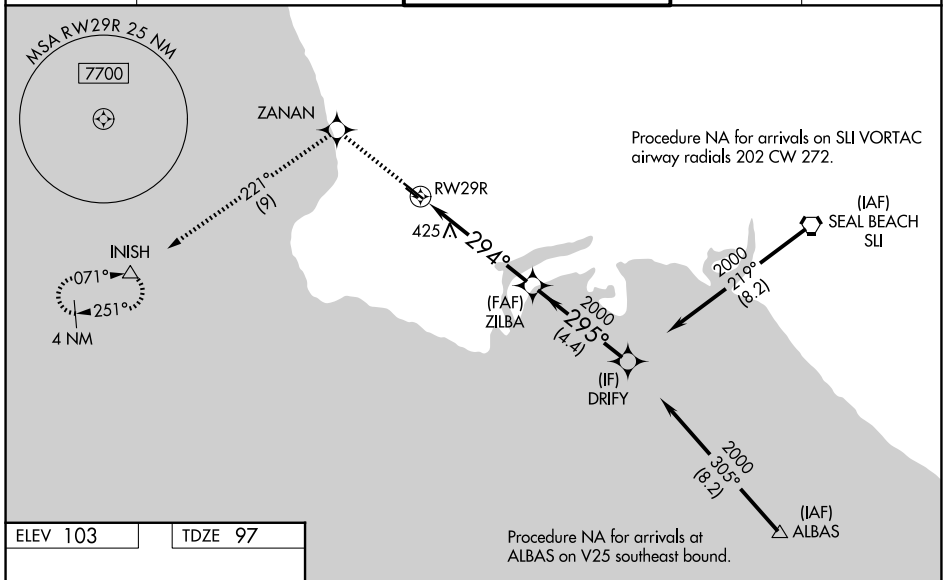
ZAMPERINI FLD (TOA)

▼ For uncompensated Baro-VNAV systems, LNAV/VNAV NA below 3°C (38°F) or above 54°C (130°F). Circling NA southwest of Rwy 11R-29L. DME/DME RNP-0.3 NA.
 ▲ For inop ALS, increase LPV all Cats visibility to ½ SM. For inop ALS when using Los Angeles Intl altimeter setting, increase LPV all Cats visibility to ¾ SM, LNAV/VNAV all Cats visibility to 2 SM, and LNAV Cat C visibility to 1¾ SM. Baro-VNAV and VDP NA when using Los Angeles Intl altimeter setting. When local altimeter setting not received, except for operators with approved weather reporting service, use Los Angeles Intl setting: increase LPV DA to 391 feet and LNAV/VNAV DA to 763 feet and all MDA 40 feet; increase LNAV/VNAV all Cats visibility and LNAV Cat C visibility ½ SM.

MALSRL

 MISSED APPROACH: (Do not exceed 185 KIAS until ZANAN) Climb to 3000 direct ZANAN and on track 221° to INISH and hold, continue climb-in-hold to 3000.

ATIS 125.6	SOCAL APP CON 124.3 363.2 (11L, 11R) 127.2 269.6 (29L, 29R)	TORRANCE TOWER* 133.075 257.8 (N) 124.0 (CTAF) 0 257.8 (S)	GND CON 120.9	UNICOM 122.95
----------------------	---	---	-------------------------	-------------------------



CATEGORY	A	B	C	D
LPV DA	367-½		270 (300-½)	NA
LNAV/VNAV DA	739-1½		642 (700-1½)	NA
LNAV MDA	680-½	583 (600-½)	680-1¼ 583 (600-1¼)	NA
CIRCLING	680-1	577 (600-1)	680-1¾ 577 (600-1¾)	NA

SW-3, 09 JUL 2026 to 06 AUG 2026

SW-3, 09 JUL 2026 to 06 AUG 2026