

VORTAC LAX 113.6 Chan 83	APP CRS 135°	Rwy Ldg TDZE 96 Apt Elev 103
--	------------------------	--

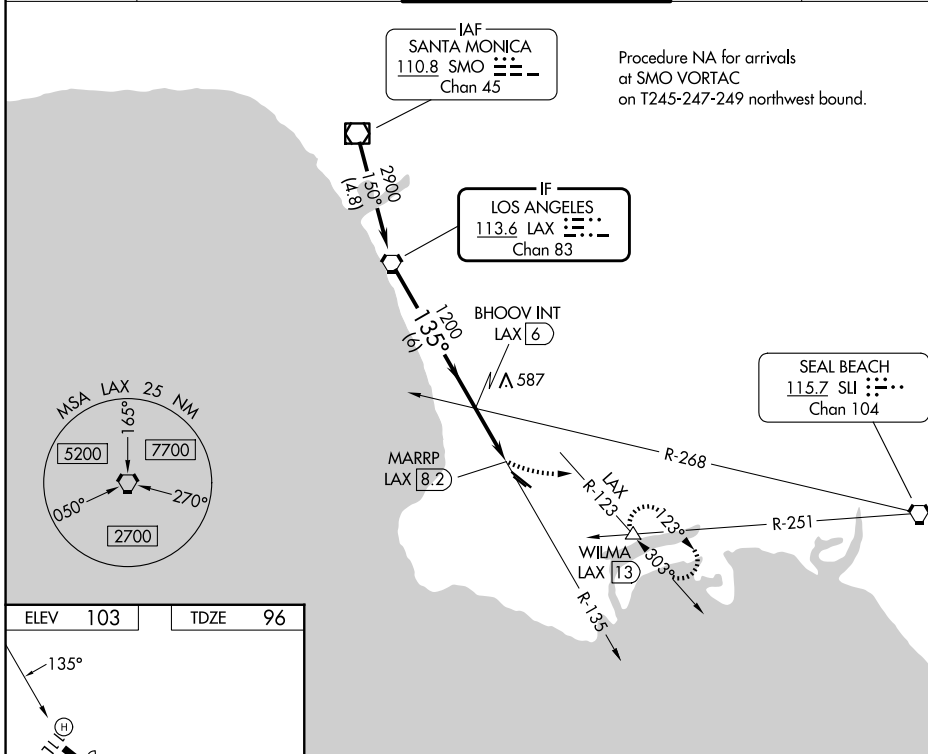
VOR RWY 11L

ZAMPERINI FLD (TOA)

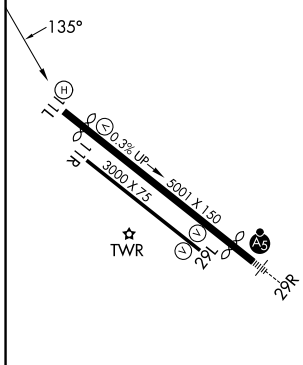
⚠ Circling NA southwest of Rwy 11R-29L. When local altimeter setting not received, except for operators with approved weather reporting service, use Los Angeles Intl altimeter setting and increase all MDA 40 feet and increase S-11L Cat A visibility and Circling Cat C visibility 1/2 SM. Rwy 11L helicopter visibility reduction below 3/4 SM NA.

MISSED APPROACH: Climbing left turn to 3000 on heading 075° and on LAX VORTAC R-123 to WILMA INT/LAX 13 DME and hold, continue climb-in-hold to 3000.

ATIS 125.6	SOCAL APP CON 124.3 363.2 (11L, 11R) 127.2 269.6 (29L, 29R)	TORRANCE TOWER* 133.075 257.8 (N) 124.0 (CTAF) 0 257.8 (S)	GND CON 120.9	UNICOM 122.95
----------------------	---	---	-------------------------	-------------------------

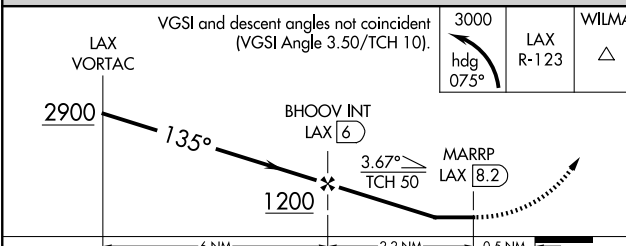


ELEV 103	TDZE 96
-----------------	----------------



REIL Rwy 29L
MIRL Rwys 11L-29R and 11R-29L
FAF to MAP 2.2 NM

Knots	60	90	120	150	180
Min:Sec	2:12	1:28	1:06	0:53	0:44



CATEGORY	A	B	C	D
S-11L	980-1 884 (900-1)	980-1 1/4 884 (900-1 1/4)	980-2 1/2 884 (900-2 1/2)	NA
CIRCLING	980-1 1/4	877 (900-1 1/4)	980-2 1/2 877 (900-2 1/2)	NA

SW-3, 09 JUL 2026 to 06 AUG 2026

SW-3, 09 JUL 2026 to 06 AUG 2026