

WAAS CH 70526 W05A	APP CRS 054°	Rwy Ldg 5502 TDZE 455 Apt Elev 459
--	------------------------	---

RNAV (GPS) RWY 5

MOORE COUNTY (SOP)

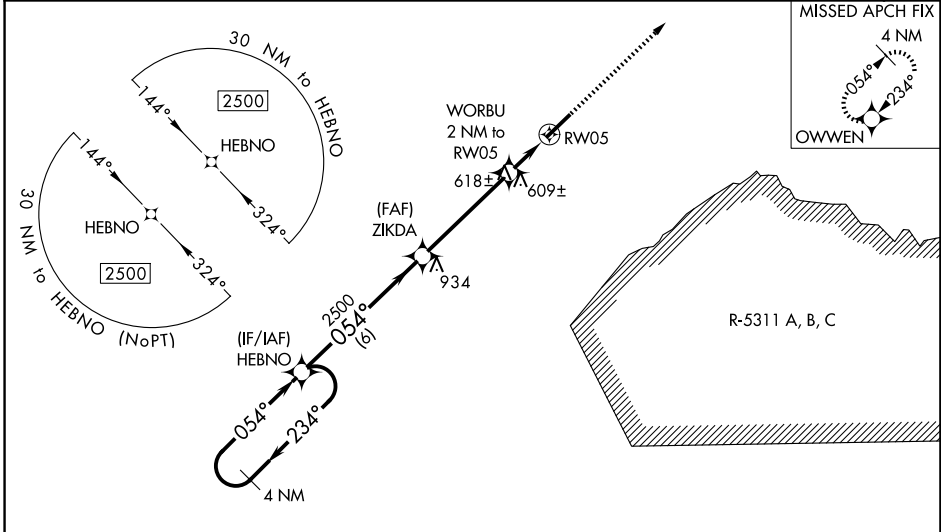
⚠ For uncompensated Baro-VNAV systems, LNAV/VNAV NA below -15°C (5°F) or above 54°C (130°F). DME/DME RNP-0.3 NA. For inop MALSR, increase LNAV/VNAV all Cats visibility to 7/8 mile, LNAV Cats A/B visibility to 1 mile and LNAV Cats C/D visibility to 1 1/8 mile. When local altimeter setting not received, use Sanford altimeter setting and increase all DA 88 feet and all MDA 100 feet, increase LNAV/VNAV all Cats visibility 1/8 mile, LNAV Cats C/D visibility 1/4 mile, and Circling Cat C 1/2 mile. When using Sanford altimeter setting, for inop MALSR increase LNAV/VNAV all Cats visibility to 1 1/8 mile, LNAV Cats A/B visibility to 1 mile, and LNAV Cat C/D visibility to 1 3/8 mile. Baro-VNAV and VDP NA when using Sanford altimeter setting.

MALSR



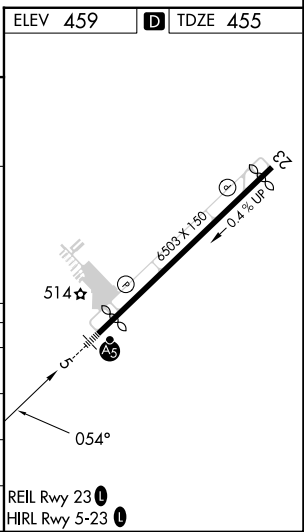
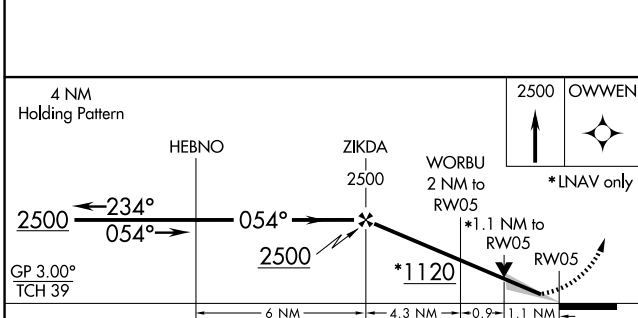
MISSED APPROACH:
Climb to 2500 direct
OWWEN and hold.

AWOS-3PT 127.575	FAYETTEVILLE APP CON 127.8 343.725	UNICOM 123.05(CTAF) 0
----------------------------	--	---------------------------------



SE-2, 09 JUL 2026 to 06 AUG 2026

SE-2, 09 JUL 2026 to 06 AUG 2026



CATEGORY	A	B	C	D
LPV DA		655-1/2	200 (200-1/2)	
LNAV/VNAV DA		750-1/2	295 (300-1/2)	
LNAV MDA	860-1/2	405 (500-1/2)	860-3/4	405 (500-3/4)
CIRCLING	880-1 421 (500-1)	920-1 461 (500-1)	1100-1 1/4 641 (700-1 1/4)	1360-3 901 (1000-3)