

LOC/DME I-SFZ	APP CRS	Rwy Ldg	5000
<b>111.9</b>	<b>047°</b>	TDZE	429
Chan 56		Apt Elev	441

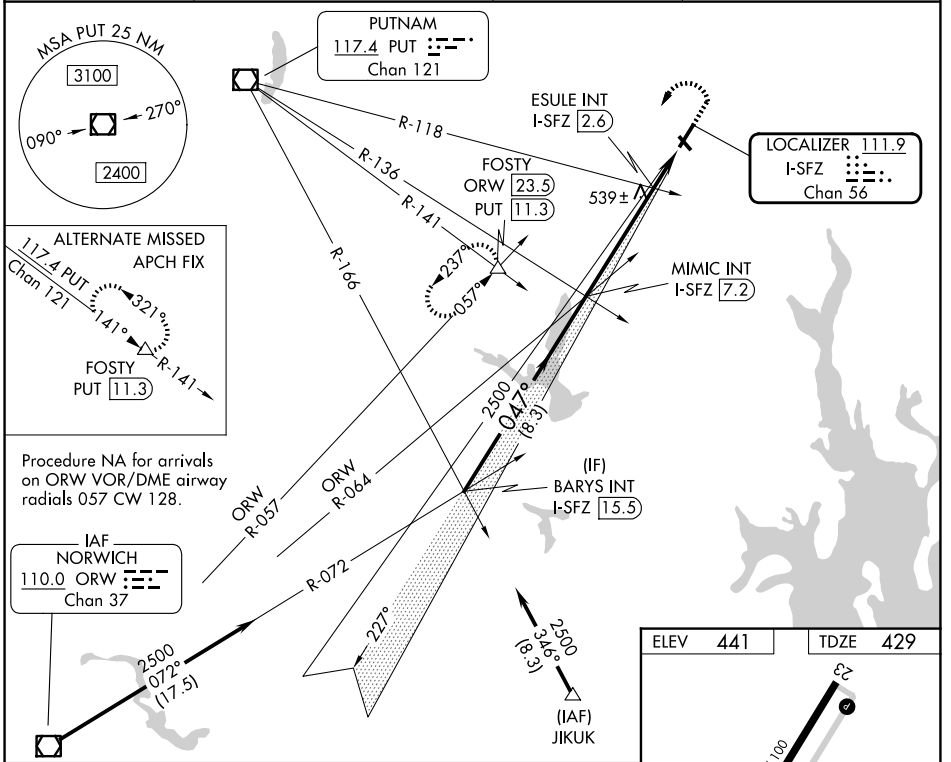
# LOC RWY 5

NORTH CENTRAL STATE (SF'Z)

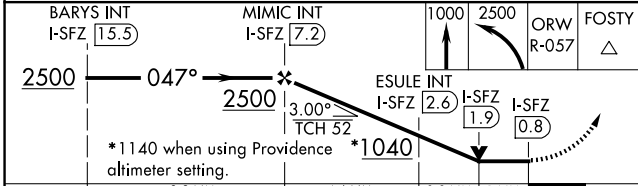
**NA** Circling Rwy 15, 33 NA at night. VDP NA with Providence altimeter setting. When local altimeter setting not received, use Providence altimeter setting and increase all MDA 100 feet; increase S-5 Cat C and Circling Cat C visibility 1/4 mile, and ESULE fix minimums S-5 Cat C visibility 1/4 mile.

**MALS** MISSED APPROACH: Climb to 1000 then climbing left turn to 2500 on ORW VOR/DME R-057 to FOSTY INT/ ORW 23.5 DME and hold.

AWOS-3PT <b>120.775</b>	PROVIDENCE APP CON ★ <b>123.675 244.875</b>	CLNC DEL <b>124.35</b>	UNICOM <b>123.075 (CTAF) 0</b>
----------------------------	--	---------------------------	-----------------------------------



Procedure NA for arrivals on ORW VOR/DME airway radials 057 CW 128.



CATEGORY	A	B	C	D
S-5	1040-3/4	611 (600-3/4)	1040-1 1/2 611 (600-1 1/2)	NA
CIRCLING	1040-1	599 (600-1)	1040-1 3/4 599 (600-1 3/4)	NA
ESULE FIX MINIMUMS (DUAL VOR RECEIVERS OR DME REQUIRED)				
S-5	800-3/4	371 (400-3/4)	800-7/8 371 (400-7/8)	NA
CIRCLING	900-1	459 (500-1)	900-1 1/2 459 (500-1 1/2)	NA

ELEV	441	TDZE	429
------	-----	------	-----

HIRL Rwy 5-23 0  
MIRL Rwy 15-33 0  
REIL Rws 15, 23 and 33 0

FAF to MAP 6.4 NM					
Knots	60	90	120	150	180
Min:Sec	6:24	4:16	3:12	2:34	2:08

NE-1, 09 JUL 2026 to 06 AUG 2026

NE-1, 09 JUL 2026 to 06 AUG 2026