

LOC I-OUT <b>111.5</b>	APP CRS <b>274°</b>	Rwy Ldg TDZE Apt Elev	<b>6500</b> <b>778</b> <b>778</b>
---------------------------	------------------------	-----------------------------	---

# ILS or LOC RWY 27

ELKHART MUNI (EKM)

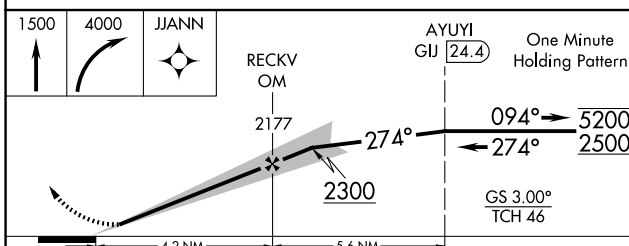
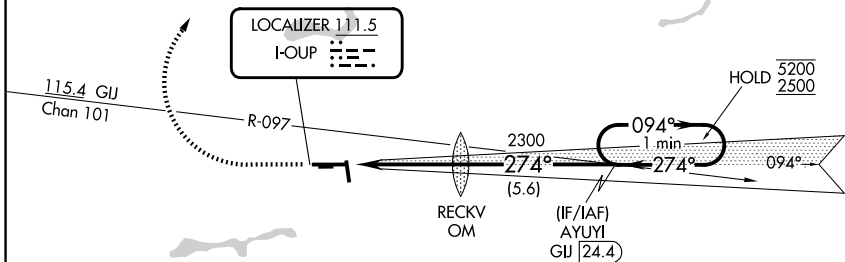
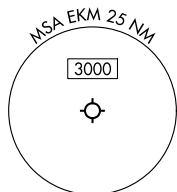
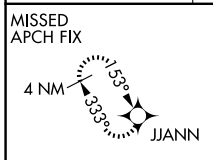
RNP APCH - GPS.  
RADAR required for procedure entry.

**⚠** Circling NA to Rwys 8 and 26. Rwy 27 helicopter visibility reduction below RVR 4000 NA.  
**⚠** Circling Rwy 18 and 36 NA at night. When local altimeter setting not received, use SBN altimeter setting and increase S-ILS 27 DA to 1100 feet, increase all MDAs 40 feet, and S-LOC 27 visibility Cat C/D to RVR 5500, and Circling visibility Cat D ¼ SM. For inop ALS, increase S-ILS 27 all Cats visibility to RVR 4500 and S-LOC 27 Cat A/B visibility to 5500 and Cat C/D visibility to 1 ½ SM. For inop ALS when using SBN, increase S-LOC 27 Cat A/B visibility to RVR 5500, and Cat C/D visibility to 1 ½ SM.

MALSRL

MISSED APPROACH:  
Climb to 1500 then climbing right turn to 4000 direct JJANN and hold.

AWOS-3PT <b>124.475</b>	SOUTH BEND APP CON ★ <b>118.55 257.8</b>	ELKHART TOWER ★ <b>119.5 (CTAF) 0</b>	GND CON <b>121.8</b>	UNICOM <b>122.95</b>
----------------------------	---	--	-------------------------	-------------------------



ELEV 778 **D** TDZE 778

MIRL Rwy 18-36 **0**  
HIRL Rwy 9-27 **0**  
REIL Rwys 9, 18 and 36 **0**

FAF to MAP 4.2 NM

Knots	60	90	120	150	180
Min:Sec	4:12	2:48	2:06	1:41	1:24

CATEGORY	A	B	C	D
S-ILS 27		1066/40	288 (300-¾)	
S-LOC 27	1240/40	462 (500-¾)	1240/50	462 (500-1)
CIRCLING	1240-1 462 (500-1)	1300-1 522 (600-1)	1380-1¾ 602 (700-1¾)	1580-2½ 802 (900-2½)

EC-2, 09 JUL 2026 to 06 AUG 2026

EC-2, 09 JUL 2026 to 06 AUG 2026