


WAAS CH <b>50107</b> <b>W27A</b>	APP CRS <b>274°</b>	Rwy Ldg TDZE Apt Elev	<b>6500</b> <b>778</b> <b>778</b>
--	------------------------	-----------------------------	---

# RNAV (GPS) RWY 27

ELKHART MUNI (EKM)

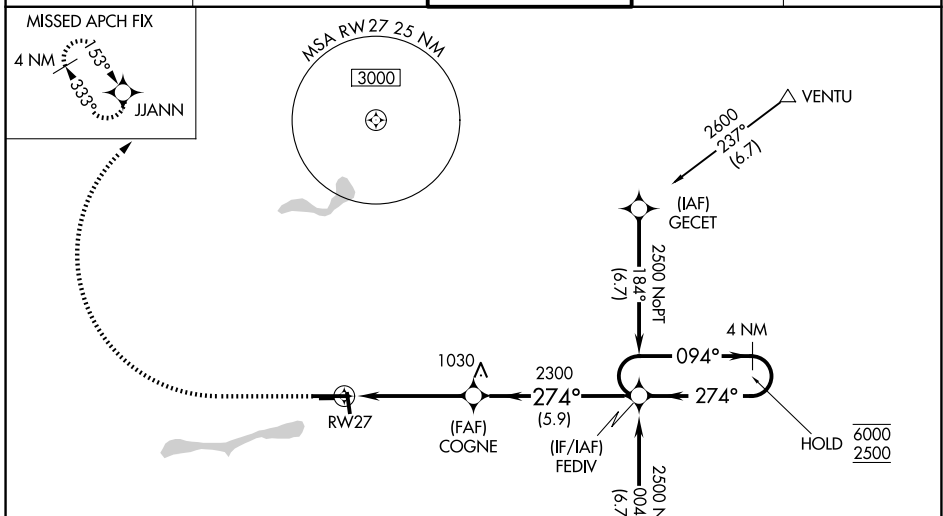
RNP APCH - GPS.

**▼** Baro-VNAV and VDP NA when using SBN altimeter setting. Circling NA to Rwy 8 and 26.  
**▲** For uncompensated Baro-VNAV systems, LNAV/VNAV NA below -16°C or above 54°C. Rwy 27 helicopter visibility reduction below RVR 4000 NA. Circling Rwy 36 NA at night. When local altimeter setting not received, use SBN altimeter setting: increase LPV DA to 1105 feet; increase LNAV/VNAV DA to 1255 feet and all visibilities to RVR 5000; increase all MDA 40 feet and LNAV visibility Cat C/D to RVR 5500 and Circling Cat D visibility ½ SM. For inop ALS, increase LPV all Cats visibility to RVR 4500, LNAV Cat A/B visibility RVR 5500 and Cat C/D to 1 ½ SM. For inop ALS when using SBN altimeter setting, increase LNAV/VNAV all Cats visibility to 1 ½ SM and LNAV Cat A/B to RVR 5500.

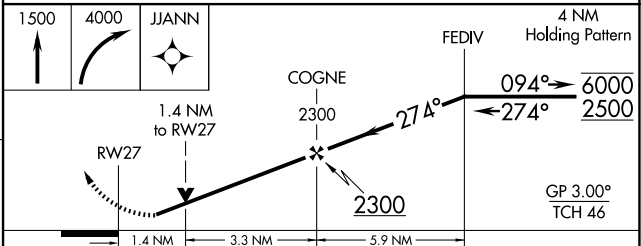
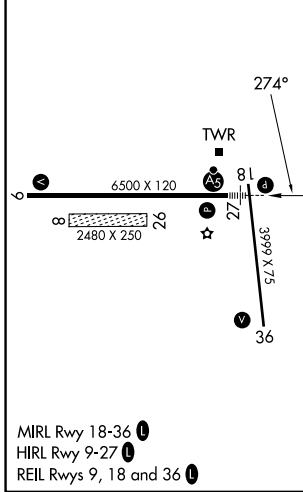
MALSRS 

MISSED APPROACH: Climb to 1500 then climbing right turn to 4000 to JJANN and hold.

AWOS-3PT <b>124.475</b>	SOUTH BEND APP CON ★ <b>118.55 257.8</b>	ELKHART TOWER ★ <b>119.5 (CTAF) 0</b>	GND CON <b>121.8</b>	UNICOM <b>122.95</b>
----------------------------	---	--	-------------------------	-------------------------



ELEV 778	<b>D</b>	TDZE 778
----------	----------	----------



CATEGORY	A	B	C	D
LPV DA		1071/40	293 (300-¾)	
LNAV/VNAV DA		1221/45	443 (500-7/8)	
LNAV MDA	1260/40	482 (500-¾)	1260/50	482 (500-1)
CIRCLING	1260-1 482 (500-1)	1300-1 522 (600-1)	1380-1¾ 602 (700-1¾)	1580-2½ 802 (900-2½)

EC-2, 09 JUL 2026 to 06 AUG 2026

EC-2, 09 JUL 2026 to 06 AUG 2026