

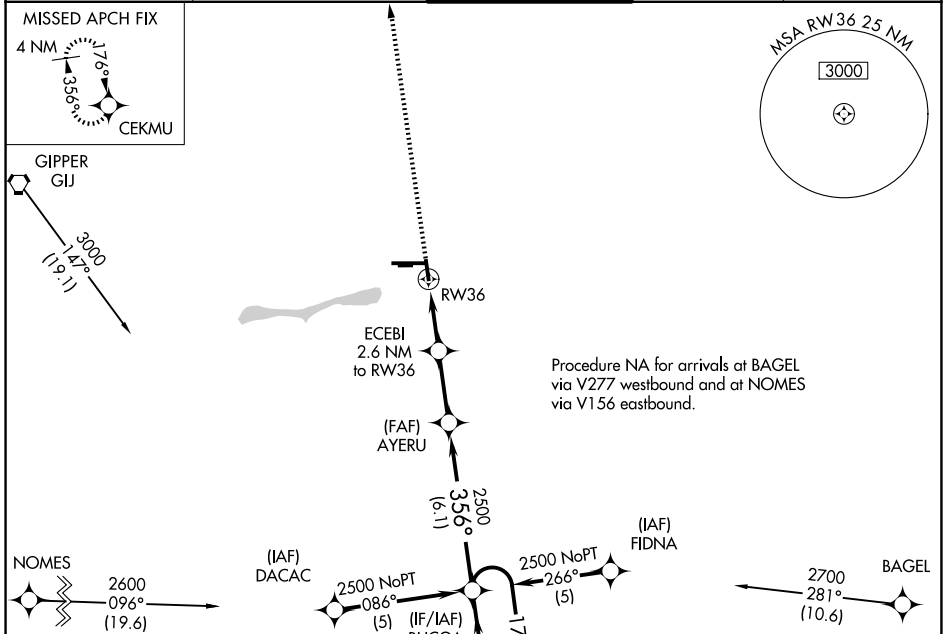
APP CRS	Rwy Ldg	3999
356°	TDZE	776
	Apt Elev	778

RNAV (GPS) RWY 36

ELKHART MUNI (EKM)

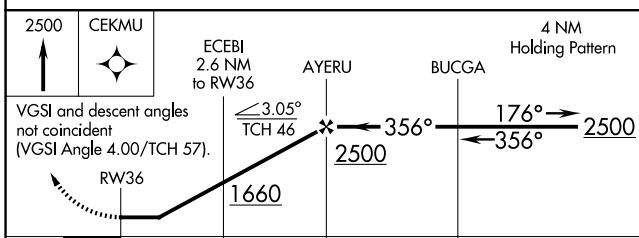
RNP APCH.	When local altimeter setting not received, use South Bend altimeter setting and increase all MDA 40 feet. Straight-in and Circling Rwy 36 NA at night. Rwy 36 helicopter visibility reduction below 1 SM NA. Circling NA to Rwys 8 and 26.	MISSED APPROACH: Climb to 2500 direct CEKMU and hold.
-----------	--	--

AWOS-3PT 124.475	SOUTH BEND APP CON ★ 118.55 257.8	ELKHART TOWER ★ 119.5 (CTAF) 0	GND CON 121.8	UNICOM 122.95
----------------------------	---	--	-------------------------	-------------------------

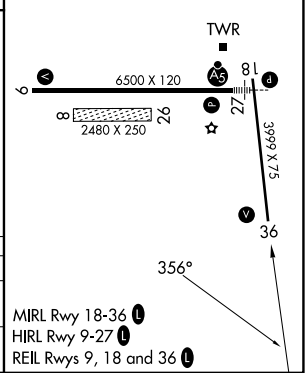


NOMES	2600 096° (19.6)	(IAF) DACAC	2500 NoPT 086° (5)	(IF/IAF) BUCGA	2500 NoPT 266° (5)	(IAF) FIDNA	2700 281° (10.6)	BAGEL
-------	------------------	-------------	--------------------	----------------	--------------------	-------------	------------------	-------

ELEV	778	D	TDZE	776
------	------------	----------	------	------------



CATEGORY	A	B	C	D
LNVA MDA	1220-1	444 (500-1)	1220-1¼ 444 (500-1¼)	1220-1½ 444 (500-1½)
CIRCLING	1240-1 462 (500-1)	1300-1 522 (600-1)	1380-1¾ 602 (700-1¾)	1580-2½ 802 (900-2½)



EC-2, 09 JUL 2026 to 06 AUG 2026

EC-2, 09 JUL 2026 to 06 AUG 2026