

APP CRS	Rwy Ldg	6500
094°	TDZE	777
	Apt Elev	778

RNAV (GPS) RWY 9

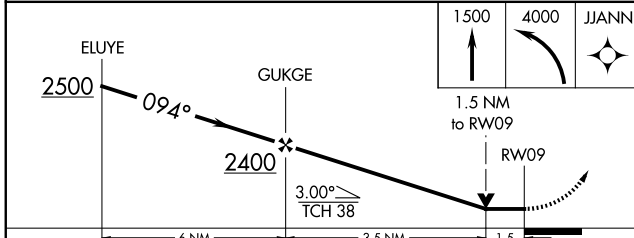
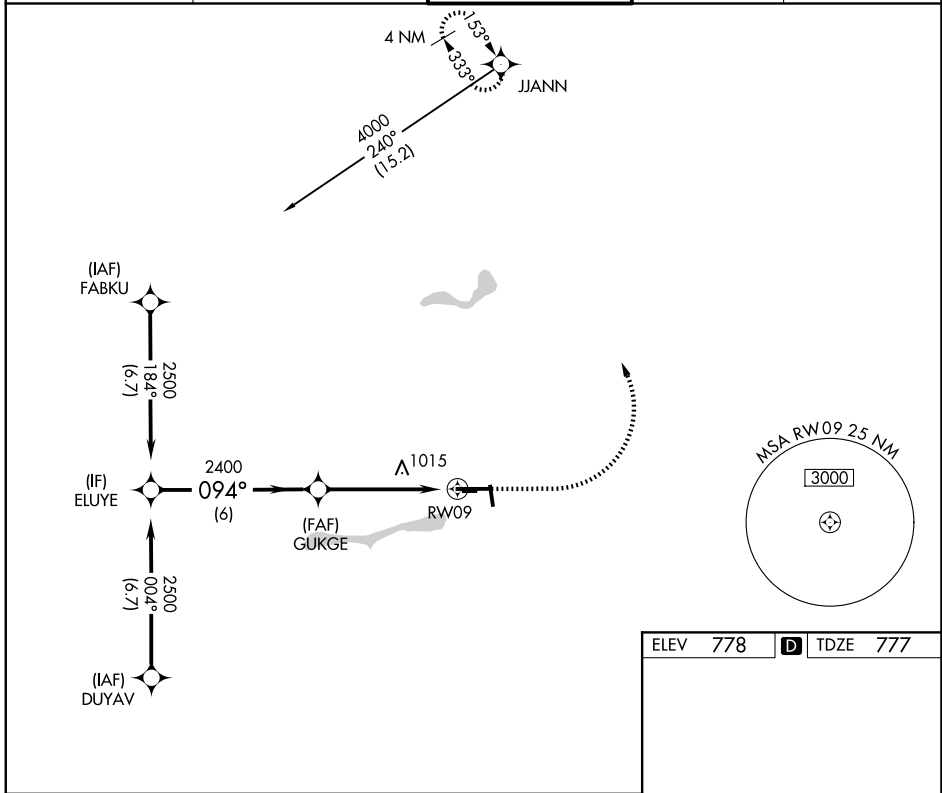
ELKHART MUNI (EKM)

RNP APCH - GPS.

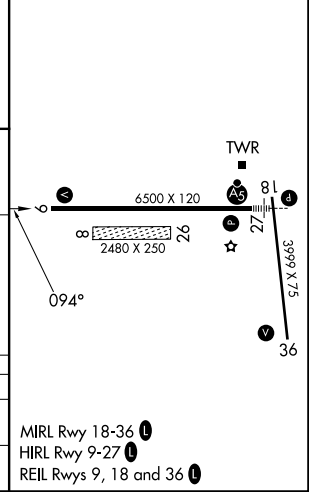
⚠ Circling NA to Rwys 8 and 26. Circling Rwy 36 NA at night. Rwy 9 helicopter visibility reduction below 3/4 SM NA. VDP NA when using SBN altimeter setting. When local altimeter setting not received, use SBN altimeter setting; increase all MDAs 40 feet and LNAV visibility Cat C/D 1/4 SM, and Circling visibility Cat D 1/4 SM.

⚠ MISSED APPROACH: Climb to 1500 then climbing left turn to 4000 direct JJANN and hold.

AWOS-3PT 124.475	SOUTH BEND APP CON ★ 118.55 257.8	ELKHART TOWER ★ 119.5 (CTAF) 0	GND CON 121.8	UNICOM 122.95
----------------------------	---	---	-------------------------	-------------------------



ELEV	778	D	TDZE	777
------	------------	----------	------	------------



CATEGORY	A	B	C	D
LNAV MDA	1280-1	503 (600-1)	1280-1 3/8	503 (600-1 3/8)
CIRCLING	1280-1 502 (600-1)	1300-1 522 (600-1)	1380-1 3/4 602 (700-1 3/4)	1580-2 1/2 802 (900-2 1/2)

MIRL Rwy 18-36 **0**
HIRL Rwy 9-27 **0**
REIL Rwys 9, 18 and 36 **0**

EC-2, 09 JUL 2026 to 06 AUG 2026

EC-2, 09 JUL 2026 to 06 AUG 2026