

(ALTNN2.ALTNN) 24137

AL-5349 (FAA)

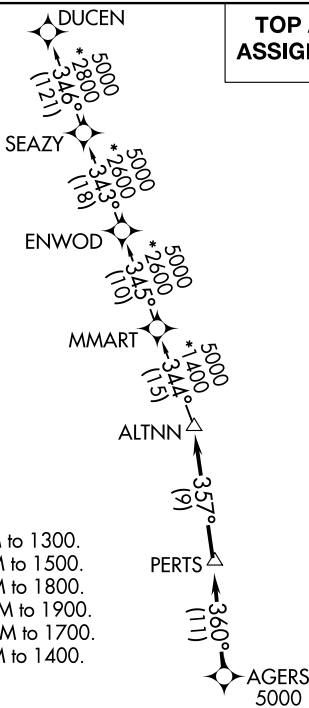
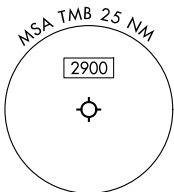
MIAMI EXEC (TMB)
MIAMI, FLORIDA

ALTNN TWO DEPARTURE (RNAV)

MIAMI DEP CON
125.5 354.1
ATIS
124.0
CLNC DEL
133.0
GND CON
121.7
MIAMI EXEC TOWER *
118.9 (CTAF)

RNAV 1 - DME/DME/IRU or GPS.
RADAR required.

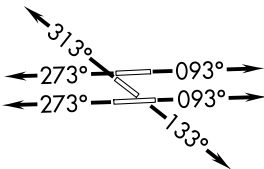
**TOP ALTITUDE:
ASSIGNED BY ATC**



TAKEOFF MINIMUMS

- Rwy 9L: Standard with minimum climb of 500'/NM to 1300.
- Rwy 9R: Standard with minimum climb of 500'/NM to 1500.
- Rwy 13: Standard with minimum climb of 500'/NM to 1800.
- Rwy 27L: Standard with minimum climb of 500'/NM to 1900.
- Rwy 27R: Standard with minimum climb of 500'/NM to 1700.
- Rwy 31: Standard with minimum climb of 500'/NM to 1400.

NOTE: Jet aircraft only.
NOTE: Accelerate to 250K until leaving 10000,
if unable, advise ATC.



NOTE: Chart not to scale.

DEPARTURE ROUTE DESCRIPTION

- TAKEOFF RUNWAYS 9L/R:** Climb on heading 093° or as assigned by ATC for RADAR vectors to cross AGERS at or above 5000, thence. . . .
- TAKEOFF RUNWAY 13:** Climb on heading 133° or as assigned by ATC for RADAR vectors to cross AGERS at or above 5000, thence. . . .
- TAKEOFF RUNWAYS 27L/R:** Climb on heading 273° or as assigned by ATC for RADAR vectors to cross AGERS at or above 5000, thence. . . .
- TAKEOFF RUNWAY 31:** Climb on heading 313° or as assigned by ATC for RADAR vectors to cross AGERS at or above 5000, thence. . . .

. . . . on track 360° to PERTS, then on track 357° to ALTNN, then on assigned transition, maintain ATC assigned altitude, expect filed altitude within 10 minutes after departure.

DUCEN TRANSITION (ALTNN2.DUCEN)

ALTNN TWO DEPARTURE (RNAV)
(ALTNN2.ALTNN) 21MAR24

MIAMI, FLORIDA
MIAMI EXEC (TMB)

SE-3, 09 JUL 2026 to 06 AUG 2026

SE-3, 09 JUL 2026 to 06 AUG 2026