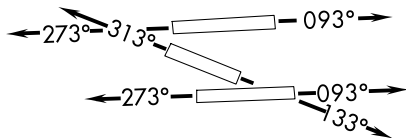
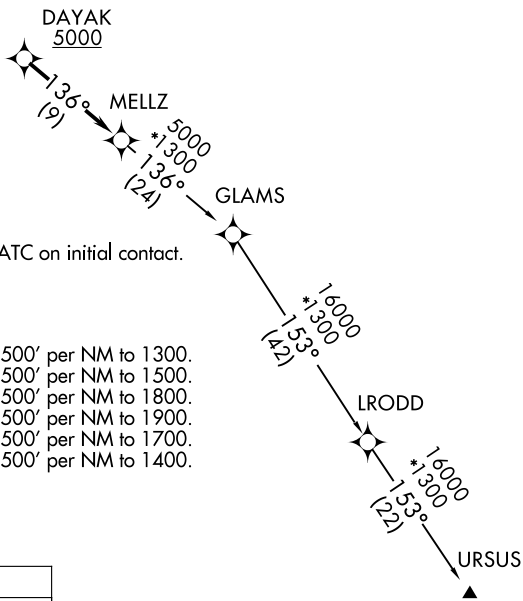


# MELLZ TWO DEPARTURE (RNAV)

**TOP ALTITUDE:  
ASSIGNED BY ATC**



- ATIS 124.0
- CLNC DEL 133.0
- GND CON 121.7
- MIAMI EXEC TOWER\* 118.9 (CTAF)
- MIAMI DEP CON 125.5 354.1



NOTE: If unable to accept climb rate, advise ATC on initial contact.

### TAKEOFF MINIMUMS

- Rwy 9L: Standard with minimum climb of 500' per NM to 1300.
- Rwy 9R: Standard with minimum climb of 500' per NM to 1500.
- Rwy 13: Standard with minimum climb of 500' per NM to 1800.
- Rwy 27L: Standard with minimum climb of 500' per NM to 1900.
- Rwy 27R: Standard with minimum climb of 500' per NM to 1700.
- Rwy 31: Standard with minimum climb of 500' per NM to 1400.

RNAV 1-DME/DME/IRU or GPS.
RADAR required for non-GPS equipped aircraft.

NOTE: Chart not to scale.

### DEPARTURE ROUTE DESCRIPTION

- TAKEOFF RUNWAYS 9L/R: Climb on heading 093° or as assigned by ATC for RADAR vectors to cross DAYAK at or above 5000 thence. . . .
- TAKEOFF RUNWAY 13: Climb on heading 133° or as assigned by ATC for RADAR vectors to cross DAYAK at or above 5000 thence. . . .
- TAKEOFF RUNWAYS 27L/R: Climb on heading 273° or as assigned by ATC for RADAR vectors to cross DAYAK at or above 5000 thence. . . .
- TAKEOFF RUNWAY 31: Climb on heading 313° or as assigned by ATC for RADAR vectors to cross DAYAK at or above 5000 thence. . . .

. . . on track 136° to MELLZ, then on assigned transition. Maintain ATC assigned altitude, expect clearance to filed altitude 10 minutes after departure.

- GLAMS TRANSITION (MELLZ2.GLAMS)
- URSUS TRANSITION (MELLZ2.URSUS)

# MELLZ TWO DEPARTURE (RNAV)

SE-3: 09 JUL 2026 to 06 AUG 2026

SE-3: 09 JUL 2026 to 06 AUG 2026