

APP CRS	Rwy Ldg	4800
227°	TDZE	666
	Apt Elev	666

RNAV (GPS) RWY 23

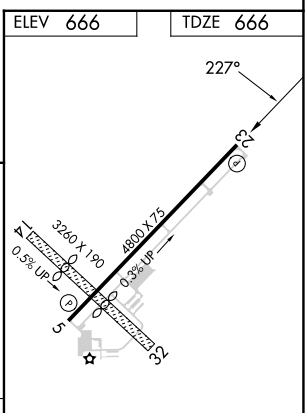
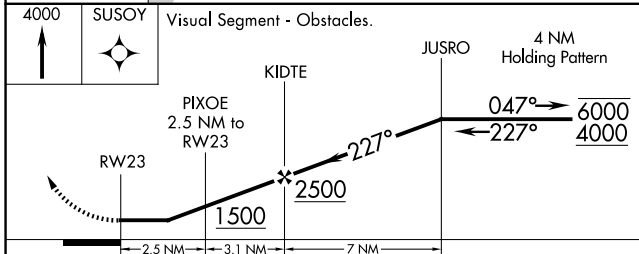
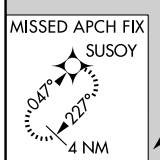
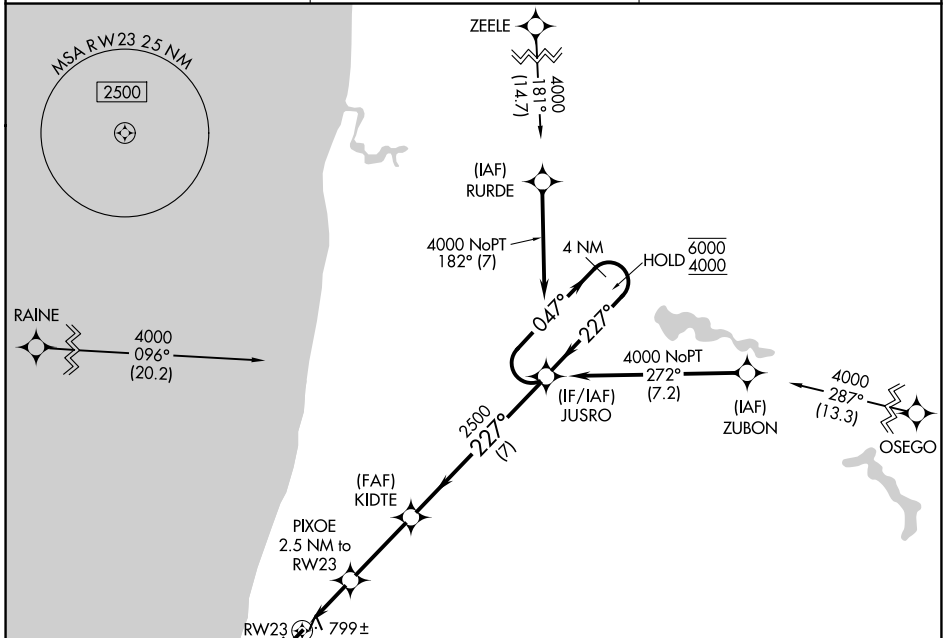
SOUTH HAVEN AREA RGNL (LWA)

RNP APCH - GPS.

▼ Rwy 23 helicopter visibility reduction below 3/4 SM NA.
▲ Circling NA to Rwy 14 and 32.

MISSED APPROACH: Climb to 4000 direct SUSOY and hold, continue climb-in-hold to 4000.

AWOS-3P 118.025	SOUTH BEND APP CON ★ 118.55 257.8	UNICOM 122.8 (CTAF) 0
---------------------------	---	---------------------------------



CATEGORY	A	B	C	D
LNVA MDA	1060-1	394 (400-1)	1060-1 1/8	394 (400-1 1/8)
CIRCLING	1120-1 454 (500-1)	1160-1 494 (500-1)	1440-2 1/4 774 (800-2 1/4)	1440-2 1/2 774 (800-2 1/2)

REIL Rwy 5 and 23 **0**
 MIRL Rwy 5-23 **0**

EC-1, 09 JUL 2026 to 06 AUG 2026

EC-1, 09 JUL 2026 to 06 AUG 2026