

WAAS CH <b>77601</b> <b>W06A</b>	APP CRS <b>059°</b>	Rwy Ldg TDZE Apt Elev	<b>3505</b> <b>831</b> <b>839</b>
--	------------------------	-----------------------------	---

# RNAV (GPS) RWY 6

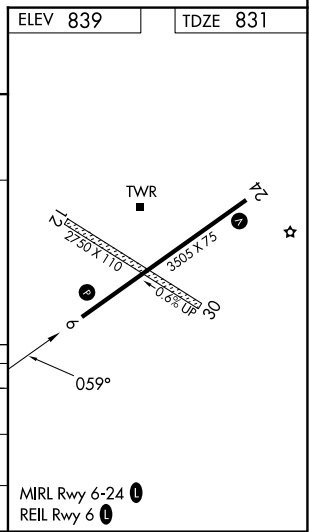
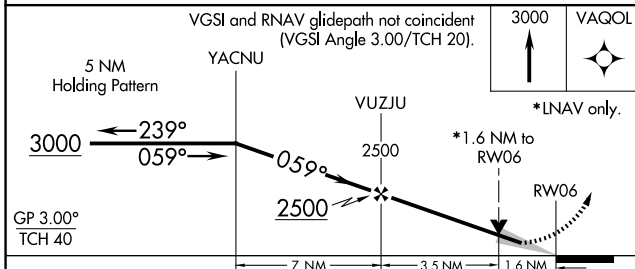
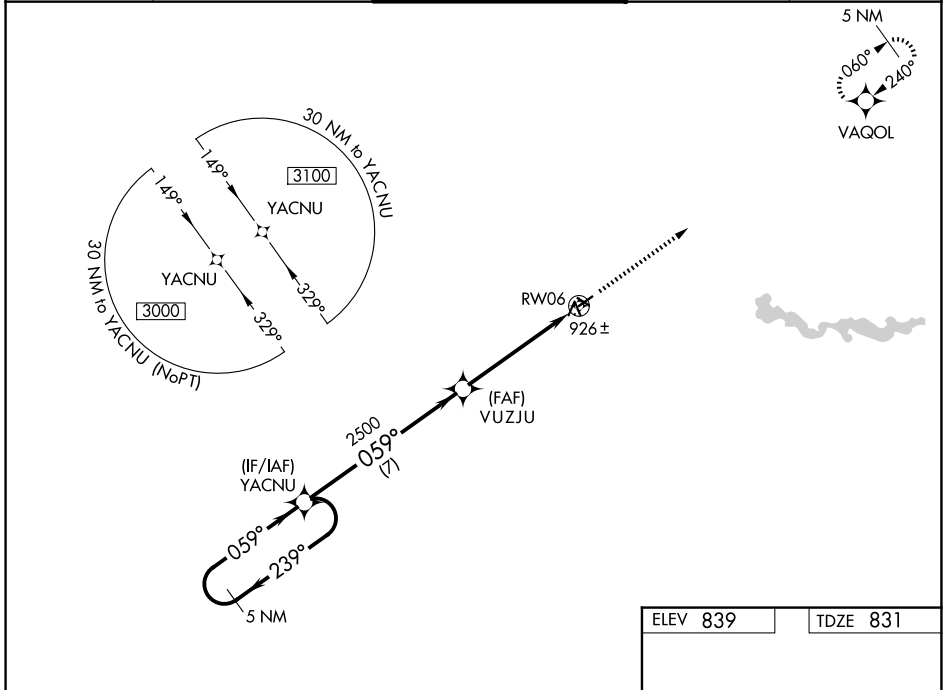
ANN ARBOR MUNI (ARB)

RNP APCH.

⚠ For uncompensated Baro-VNAV systems, LNAV/VNAV NA below -16°C or above 38°C. VDP and Baro-VNAV NA when using Willow Run altimeter setting. When local altimeter setting not received, use Willow Run altimeter setting and increase all DA/MDA 40 feet; increase LNAV Cats C and D visibility 1/8 SM.

MISSED APPROACH: Climb to 3000 direct VAQOL and hold.

ATIS <b>134.55</b>	DETROIT APP CON <b>118.95 284.0</b>	ANN ARBOR TOWER ★ <b>120.3 (CTAF) 0</b>	GND CON <b>121.6</b>	UNICOM <b>123.0</b>
-----------------------	--	--	-------------------------	------------------------



CATEGORY	A	B	C	D
LPV DA		1081-1	250 (300-1)	
LNAV/VNAV DA		1097-1	266 (300-1)	
LNAV MDA	1360-1	529 (600-1)	1360-1½	529 (600-1½)

EC-1, 09 JUL 2026 to 06 AUG 2026

EC-1, 09 JUL 2026 to 06 AUG 2026